

Linear Actuator LA40

Data Sheet



Contents

Introduction	3
Features and options	4
Usage	6
Ordering example	7
Back fixture orientation	8
Technical specifications	8
Dimensions	9
LA40 Standard.....	9
LA40 High Performance (HP).....	10
LA40 Patient Lift (PL).....	11
LA40 Quick Release (QR)	12
LA40 QR with Damper.....	13
Details on back fixture ends	14
Details on piston rod eyes	15
Piston rod eyes for LA40 Standard	15
Piston rod eyes for LA40 HP	16
Piston rod eyes for LA40 PL.....	16
Piston rod eyes for LA40 QR and LA40 QR + Damper.....	17
Mounting examples	18
LA40 Std. mounted with CA30-CA40 control boxes	18
CA30-CA40/LA40 mounting bracket	18
LA40 Std. mounted with CO control boxes	19
LA40 HP mounted with CO control boxes	20
Control box combination overview	21
Load curves	22
LA40 Standard, motor type B.....	22
LA40 Standard, motor type G	24
LA40 HP, motor type G	26
LA40 PL, motor type F	26
LA40 QR, motor type B.....	26
Contacts	27

Introduction



The LA40 is a low noise and powerful actuator which is available in a 1,500 N, 4,000 N, 6,000 N and an 8,000 N version.

With the LA40, LINAK offers a new durable actuator with high speed/high performance and mechanical endstop for first failure safety making it the right choice for the future market. The LA40 versions are rated up to IPX6 Washable DURA™, except for the LA40 PL version which is rated up to IPX6.

The LA40 8,000 N is available in four versions:

- Standard
- High Performance (HP)
- Patient Lift (PL)
- Quick Release (QR)

Based on the extensive knowledge and experience from previous actuator families, LINAK has developed new gear and braking principles that improve the efficiency of the LA40. These innovative solutions are covered by several patents.

Equipped with a socket for exchangeable cables, the LA40 has the same flexibility as previous families, and existing minifit cables can be used.

The LA40 family has a very smooth design, enlarging their field of application due to easy cleanability and mounting flexibility.

The LA40 is designed for a wide range of applications within both the medical and beds market such as e.g. care and hospital beds, couches, patient lifts and dental chairs. The LA40 can be ordered with an optional spline function (push only) and/or quick release.

LA40 range:

- The standard version runs 8,000 N from 0-50 mm stroke length with a subsequent decreasing load on the rest of the stroke up to 250 mm
- The High Performance version can perform 8,000 N on full stroke length up to 250 mm
- The Patient Lift version can perform 8,000 N up to 400 mm stroke
- The Quick Release version can perform 4,000 N on full stroke length up to 300 mm

Features and options

Load in push:	1,500 N, 4,000 N, 6,000 N, 8,000 N
Load in pull:	LA40 Std. + LA40 HP without spline, up to 2,000 N LA40 PL + LA40 QR (not suitable for pull)
Dynamic push and pull:	Actuators are designed for push or pull applications. If a combination is required, please contact your local LINAK salesperson.
Housing colour:	Light grey, RAL 7035 Black, RAL 9005 (special article)
Protection class:	IPX6, IPX6 Washable DURA™ (manual lowering only IPX6)
Motor:	Std. motor (B), HP motor (G), PL motor (F)
Stroke length:	<p>Standard version: 1500 N: 50 - 405 mm 4,000 N: 50 - 300 mm 6,000 N: 50 - 200 mm 8,000 N: 50-250 mm</p> <p>High Performance (HP) version: 8,000 N: 50 -250 mm full stroke</p> <p>PL version: 8,000 N: 50 - 400 mm (in steps of 5 mm)</p> <p>(stroke length 305-400 mm only available for 6,000 N version) (in accordance with ISO10535)</p> <p>QR version: 4,000 N: 50 - 300 mm (in steps of 5 mm)</p> <p>Longer stroke lengths are possible - please contact your nearest sales office. This may have influence on the safety factor.</p> <p>Tolerance on stroke length: ± 2 mm</p>
Minimum built-in dimensions:	<p>Standard version: Stroke + 170 mm With mechanical spline, stroke + 180 mm</p> <p>HP version: <i>Stroke + 170 mm \leq 250 mm</i></p> <p>PL version: <i>With ratchet spline, stroke + 274 mm; $S \leq 300$ mm</i> <i>With ratchet spline, stroke + 294 mm; $S \leq 400$ mm</i></p> <p>QR version: With QR, stroke + 180 mm With QR and mechanical spline, stroke + 190 mm With QR and ratchet spline, stroke + 180 mm With QR Damper, add 15 mm to BID for all QR versions Tolerance on built-in dimension: ± 2 mm</p>



Quick release:	Internal, only for LA40 Standard versions
Quick release Damper:	Internal, only for LA40 Standard versions
Manual lowering:	Only for Patient Lift version
Noise level:	≤50 dB (A)
Nut:	Guided spindle nut for Standard and High Performance Non-guided spindle nut for Patient Lift version (ML)
Safety nut:	Standard
Spline:	Mechanical spline or ratchet spline Required activation force during inward operation: 50-100 N <ul style="list-style-type: none"> • For QR versions: Force required to manually activate spline (actuator not in operation): Static pull force = 300-550 N • For PL version: Always with ratchet spline • For HP version: Always with ratchet spline
Built-in electrical limit switch:	Signal switch or power switch
Built-in endstop:	Mechanical (for safety only)
Exchangeable cable:	Minifit plug
Safety factor is:	Up to 2.5 2.0 = Bed applications 2.0 = Patient lift 2.5 = Medical applications
Weight:	> 2.0 kg (depending on version and specification)
Static bending moment:	No side load allowed
Feedback type:	None, dual Hall (digital or encoded dual Hall) Potentiometer (only for QR version)



Usage

Duty cycle:	10%, 2 minutes continuous use, followed by 18 minutes not in use
Usage temperature:	+5 °C to +40 °C
Storage temperature:	-10 °C to +50 °C
Compatibility:	Compatible with LINAK control boxes. Please contact LINAK.
Relative humidity:	20% to 80% - non-condensing
Atmospheric pressure:	700 to 1,060 hPa
Height above sea level	Max. 3,000 meters
Flammability rating:	UL94V-2
Approvals:	IEC 60601-1 ANSI/AAMI ES60601-1 CAN/CSA-C22.2 No 60601-1

The product is not designed for dynamic load changes (from push to pull or vice versa). If the application design requires a product with a dynamic load change capability, please contact LINAK for investigation of product feasibility or guidance.



Ordering example

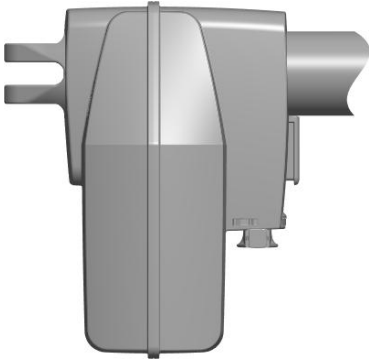
Actuator type:		LA		QR	Std.	HP	PL	
	40							
Spindle pitch:	040	030	=3 mm	Only available for 8000 N version Standard		X		
		040	=4 mm	Available for 4000 N without QR, 6000 N and all 8000 N HP/PL versions	X	X	X	
		050	=5 mm	Only available for 4000 N version	X	X		
		090	=9 mm	Only available for 1500 N version		X		
Stroke length:	200	xxx	=xxx mm	1500 N: From 50-405 mm in steps of 5 mm		X		
				4000 N: From 50-300 mm in steps of 5 mm	X	X		
				6000 N: From 50-200 mm in steps of 5 mm		X		
				8000 N: From 50-250 mm in steps of 5 mm		X	X	
				8000 N: From 50-400 mm in steps of 5 mm			X	
Safety:	0A	0A	=Safety Nut		X	X		
		0D	=Mech. Spline + Safety nut	Only available for 4000 N	X	X		
		0K	=Ratchet Spline + Safety Nut	Only available for "Quick Release": 1 = QR.		X		
		0L	=Ratchet Spline + Safety Nut	Only available for High Performance and Patient Lift versions			X	X
Feedback:	00	00	=None (F1)	Possible with any end stop type Not available for QR version. Only possible with end stop type: 0 = Power switch (E1)	X	X	X	X
		0H	=Dual Hall, digital (F2)	Not available for QR version. Only possible with end stop type: 0 = Power switch (E1)		X	X	X
		0M	=Dual Hall, encoded (F3)	Not available for QR version. Only possible with end stop type: 2 = Encoded (E3)		X	X	X
		0P	=Potentionmeter (F6)	Only available for QR version. Not possible with end stop type: 2 = Encoded (E3) Max. possible stroke length is 280 mm (spindle pitch 5 mm)	X			
Platform:	0	0	=None (P0)		X	X	X	X
Motor type:	B	B	=24 VDC Standard + QR		X	X		
		G	=24 VDC High Performance		X	X		
		F	=24 VDC Patient Lift (only 24VDC)				X	
Endstop:	0	0	=Power switch (E1)	JUMBO + 3rd party control boxes	X	X	X	X
		1	=Signal switch (E2)	LINAK control boxes (analogue + OpenBus)	X	X	X	X
		2	=Encoded (E3)	LINAK control boxes (analogue + OpenBus)	X	X	X	X
IP degree:	6	6	=IPX6		X	X	X	X
Colour:	+	+	=IPX6 Washable DURA™ =Light Grey RAL 7035		X	X	X	X
Back fixture:	1	1	=With slot Ø10,2	Only available for ≤ 6000 N version		X		
		2	=With slot Ø12,2	Only available for ≤ 6000 N version		X		
		3	=Solid Ø10,2	Only available for QR and 8000 N version	X	X		
		4	=Solid Ø12,2	8000 N version		X		
		6	=With slot Ø 10,2	Only available for 8000 N High Performance + Patient Lift versions		X	X	
		7	=With slot Ø 12,2	Only available for 8000 N High Performance + Patient Lift versions		X	X	
		8	=Solid Ø10.2 Long Hole	Only available for 4000N with QR Damper	X			
Back fixture rotation:	0	1	=Standard		X	X	X	X
		2	=Turned 90°		X	X	X	X
Piston Rod:	D	C	=Steel Ø12.2 (solid)	Not possible for HP version	X	X		
		D	=Steel Ø12.2 (with slot)	Not possible for QR version		X	X	
		F	=ML Ø12.2*)	Only for Manual Lowering option			X	
		G	=ML Ø12.2 (with slot*)	Only for Manual Lowering option			X	
				*) please note in system spec. if other colour (red) is requested				
Bushings:	A	A	=No Bushings		X	X	X	X
		B	=Plastic bushings with Ø 10.2 hole in piston rod		X	X	X	X
Brake:	1	1	=Brake in push		X	X	X	X
Install. Dim:	370	xxx	=xxx mm	Standard + High Performance (HP):	BID = SL + 170 (minimum BID = SL + 170)	X	X	
				Standard with mech. spline:	BID = SL + 180 (minimum BID = SL + 180)		X	
				QR:	BID = SL + 180 (minimum BID = SL + 180)	X		
				QR with ratchet spline:	BID = SL + 180 (minimum BID = SL + 180)	X		
				QR with mech. spline:	BID = SL + 190 (minimum BID = SL + 190)	X		
				QR with Damper	Add 15mm BID to all QR versions		X	
				ML with ratchet spline:	BID = SL + 274 (SL ≤ 300)		X	
				ML with ratchet spline:	BID = SL + 294 (300 < SL ≤ 400)		X	
Option load	1	1	=6000 N version		X			
		2	=8000 N version (8000 N – 5500 N)		X			
		3	=1500 N version		X			
		4	=4000 N version		X	X		
		6	=8000 N version (full stroke)			X	X	
Fire Category:	2	2	=V2		X	X	X	X
Option Lowering:	0	0	=None		X	X	X	
		1	=QR	Only available for 4000 N version		X		
		2	=QR with Damper	Only Available for 4000N version		X		
		J	=Manual Lowering (ML)*	Not possible for QR			X	
			*) please note in system spec. if other colour (red) is requested					
Not Used	0	0	=Not specified		X	X	X	X
Safety factor	0	0	=2.0	Bed applications		X	X	X
		1	=2.0	Patient Lifts				X
		2	=2.5	Medical applications		X	X	X



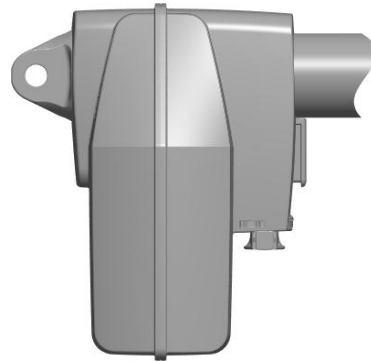
Back fixture orientation

Orientation of back fixture in relation to encapsulation:

1 = Standard orientation



2 = Turned 90° orientation



Technical specifications

Actuator type	Motor type	Power supply	Spindle pitch (mm)	Max. load Push (N)	Self-locking Push (N)	Max. load pull without spline (N)	Typical speed at 0/max. load (mm/sec.)	Typical current at full load (Amps)
LA40 Std.	Standard (B)	24 VDC	3	8,000	8,000	2,000	4.1/2.5	5.5
LA40 Std.	Standard (B)	33 VDC	3	8,000	8,000	2,000	5.5/4.0	5.5
LA40 Std.	HP motor (G) *	24 VDC	3	8,000	8,000	2,000	4.6/3.4	5.6
LA40 Std.	HP motor (G) *	33 VDC	3	8,000	8,000	2,000	6.3/5.1	4.9
LA40 Std.	Standard (B)	24 VDC	4	8,000	8,000	2,000	5.5/3.0	6.1
LA40 Std.	Standard (B)	33 VDC	4	8,000	8,000	2,000	7.3/5.0	6.3
LA40 HP	HP motor (G)	33 VDC	4	8,000	8,000	2,000	9.2/6.5	7.5
LA40 PL	PL motor (F)	24 VDC	4	8,000	8,000	-	9.3/6.1	9.0
LA40 Std.	Standard (B)	24 VDC	4	6,000	6,000	2,000	5.5/3.6	5.1
LA40 Std.	Standard (B)	33 VDC	4	6,000	6,000	2,000	7.3/5.6	5.0
LA40 Std.	HP motor (G) *	24V DC	4	8,000	8,000	2,000	5.8/4.5	6.0
LA40 Std.	HP motor (G) *	33V DC	4	8,000	8,000	2,000	7.3/5.6	5.0
LA40 Std.	QR (B)	24V DC	5	4,000	4,000	-	6.5/5.2	3.5
LA40 Std.	QR (B)	33V DC	5	4,000	4,000	-	9.0/7.5	3.7
LA40 Std.	Standard (B)	24V DC	5	4,000	4,000	2,000	6.5/5.2	3.5
LA40 Std.	Standard (B)	33V DC	5	4,000	4,000	2,000	9.0/7.5	3.7
LA40 Std.	HP motor (G) *	24V DC	5	4,000	4,000	2,000	7.9/6.4	3.4
LA40 Std.	HP motor (G) *	33V DC	5	4,000	4,000	2,000	10.8/9.3	3.3
LA40 Std.	Standard (B)	24V DC	9	1,500	1,500	1,500	11.9/10.4	2.3
LA40 Std.	Standard (B)	33V DC	9	1,500	1,500	1,500	16.3/14.9	2.3
LA40 Std.	HP motor (G) *	24V DC	9	1,500	1,500	1,500	13.5/12.2	2.4
LA40 Std.	HP motor (G) *	33V DC	9	1,500	1,500	1,500	19.2/18.5	2.5

*Standard with HP motor (G) - unable to achieve 8,000 N across the full stroke.

Comments to Technical Specifications:

Self-locking ability

LINAK control boxes are designed so that they will short-circuit the motor terminals (poles) of the actuator(s), when the actuator(s) is/are not running. This solution gives the actuator(s) a higher self-locking ability. If the actuator(s) is/are not connected to a LINAK control box, the terminals of the motor must be short-circuited to achieve the self-locking ability of the actuator(s).

When using the LA40 with CA30-CA40 and CO61, the terminals are only short-circuited for max. 60 seconds. Afterwards, the actuator is self-locking.



Recommendations

Please note that extension of the built-in dimension may reduce the safety factor.



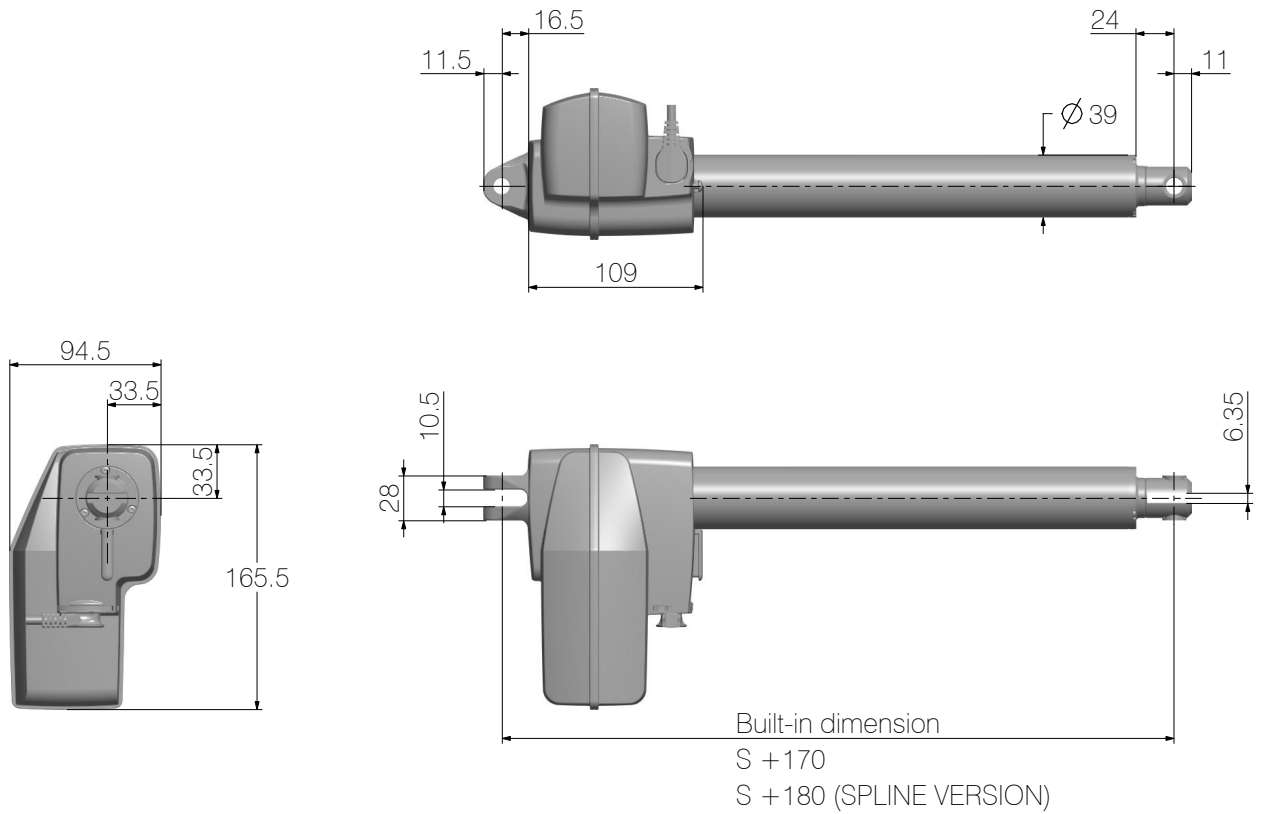
Dimensions

All dimensions are in mm.

Tolerances (for all LA40 versions)

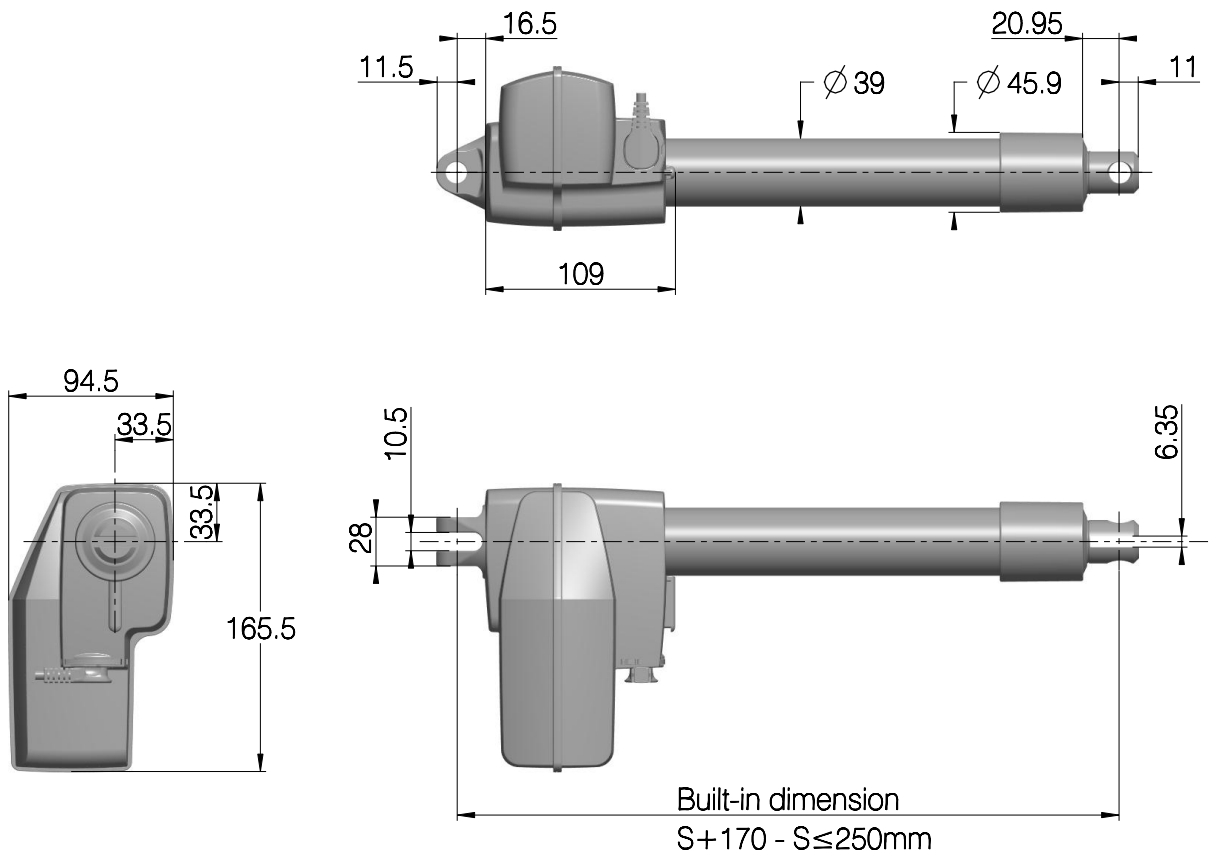
For built-in dimensions and stroke length ± 2 mm

LA40 Standard



Drawing no.: 0404006

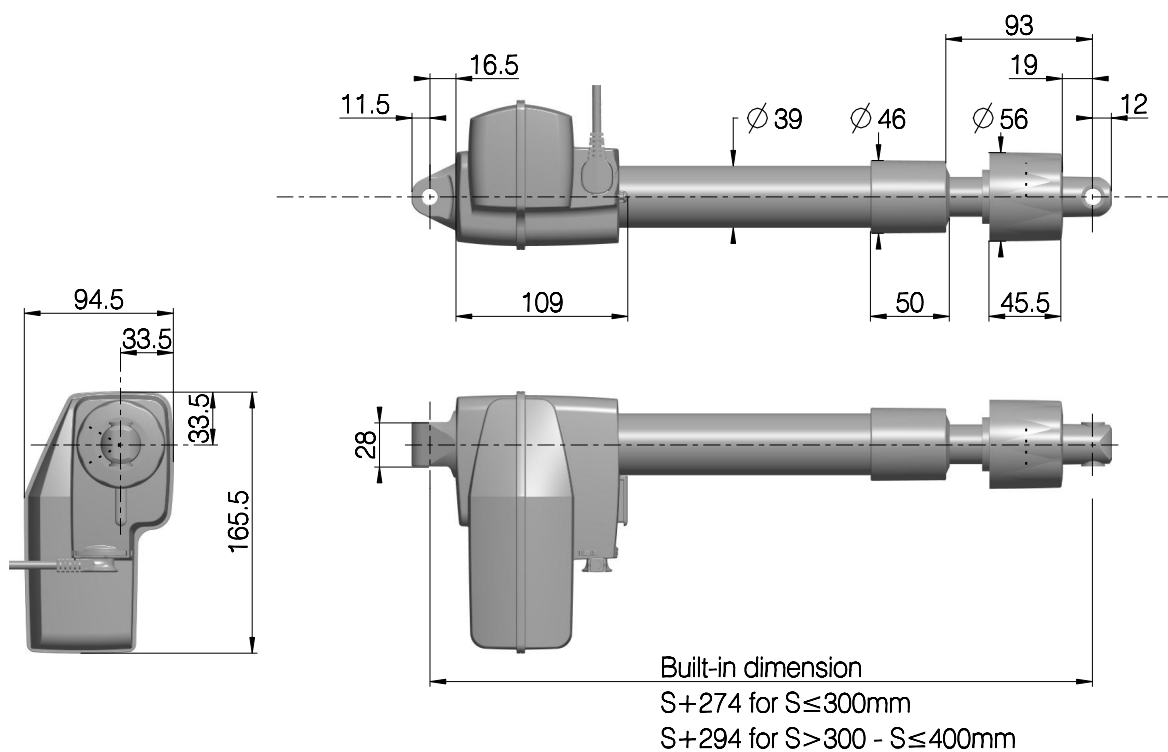
LA40 High Performance (HP)



Drawing no.: 0404021



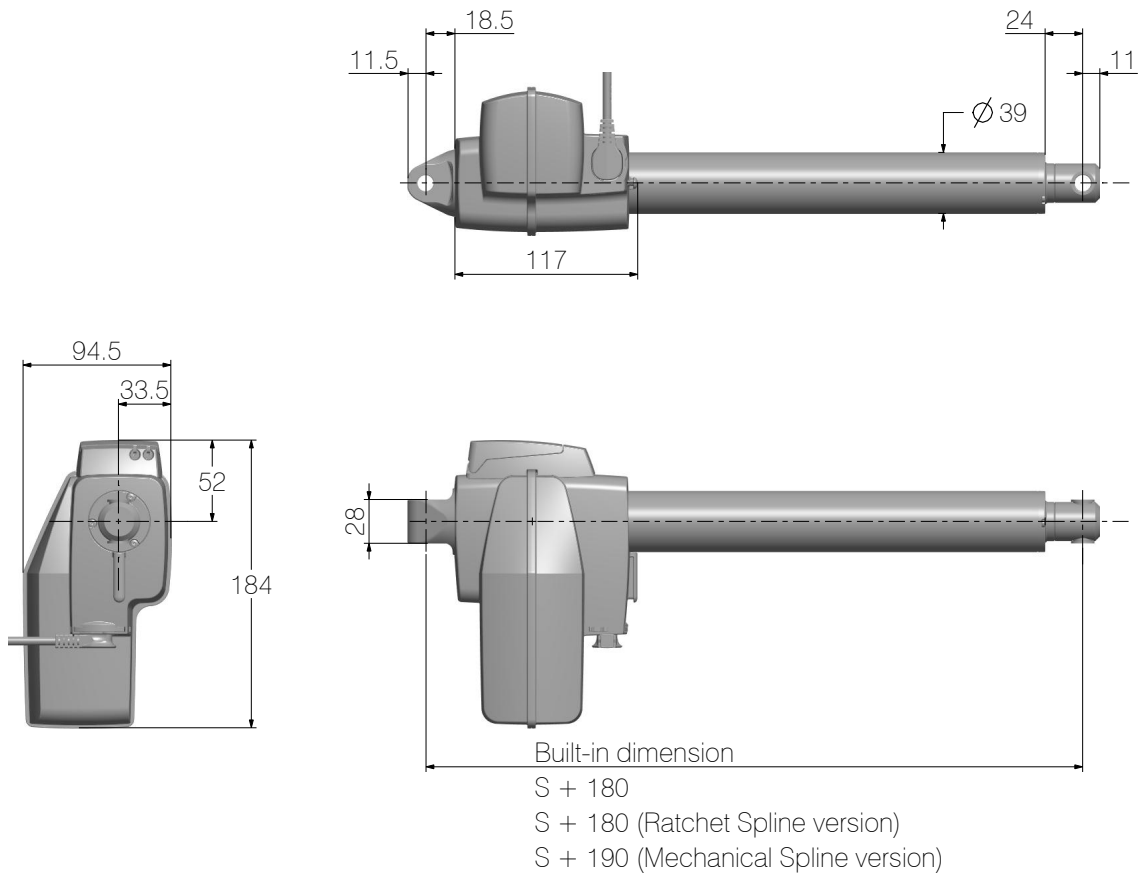
LA40 Patient Lift (PL)



Drawing no.: 0404022



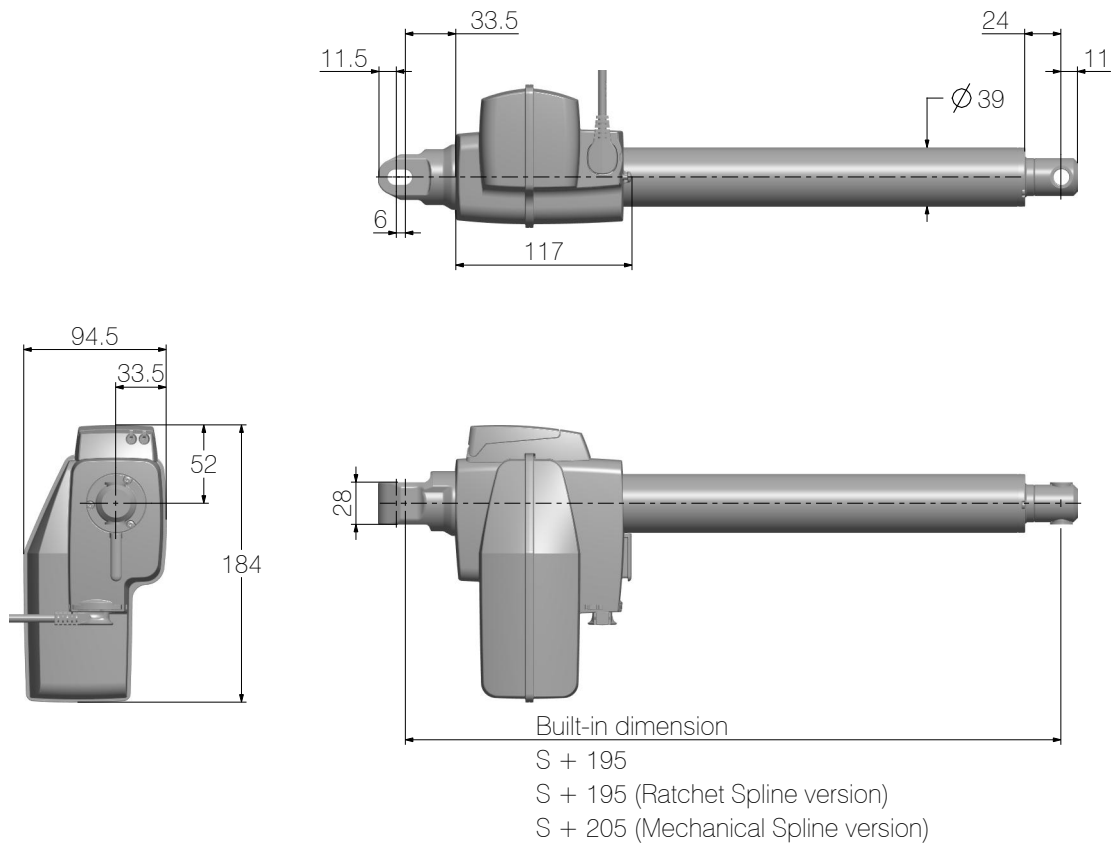
LA40 Quick Release (QR)



Drawing no.: 0404043



LA40 QR with Damper



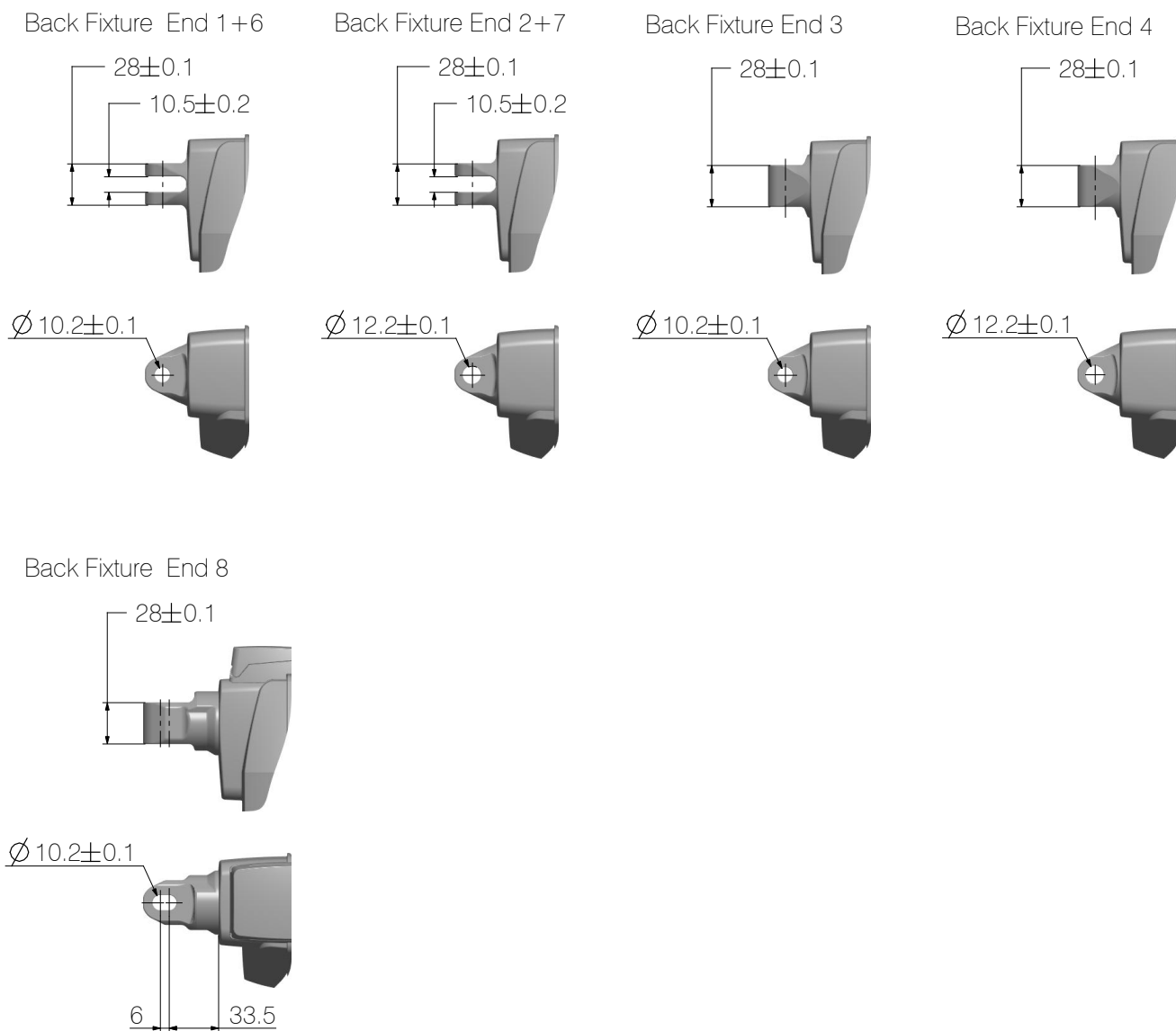
Drawing no.: 0404043



Details on back fixture ends

	Back fixture ends (for further details see ordering example)						
	End 1	End 2	End 3	End 4	End 6	End 7	End 8
1,500 N Standard	X	X					
4,000 N Standard	X	X					
6,000 N Standard	X	X					
8,000 N Standard			X	X			
4,000 N with QR			X				
4,000 N with QR + Damper							X
8,000 N HP					X	X	
8,000 N PL					X	X	

Back fixture overview - shown in standard orientation, also available in 90° turned:



Drawing no.: 0404006

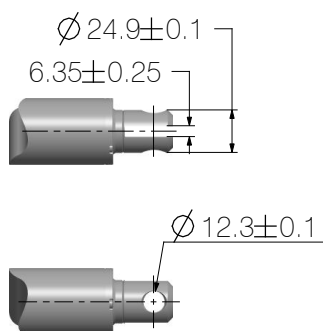


Details on piston rod eyes

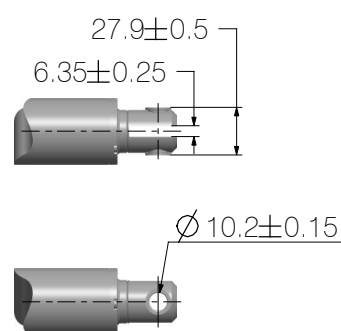
	Piston rod eyes						
	Eye 1	Eye 2	Eye 3	Eye 4	Eye 5 PL	Eye 6	Eye 7
1,500 N Standard	X	X	X	X			
4,000 N Standard	X	X	X	X			
6,000 N Standard	X	X	X	X			
8,000 N Standard	X	X		X			
4,000 N with QR		X		X			
4,000 N with QR + Damper		X		X			
8,000 N HP						X	X
8,000 N PL					X		

Piston rod eyes for LA40 Standard

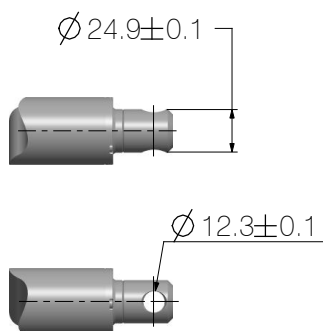
Eye 1 (Type D)
With slot, no bushing



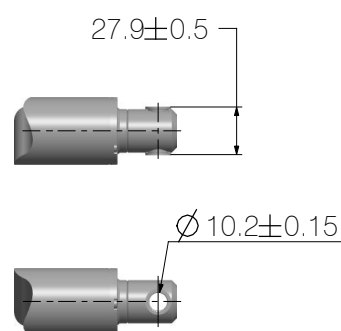
Eye 3 (Type D + option B)
With slot, with bushing



Eye 2 (Type C)
Solid, no bushing



Eye 4 (Type C + option B)
Solid, with bushing

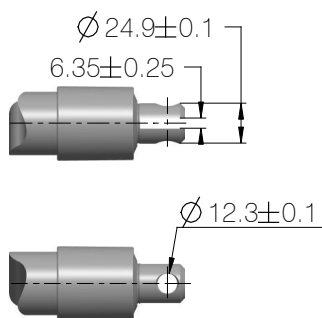


Drawing no.: 0404006

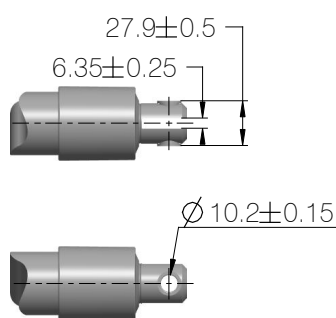


Piston rod eyes for LA40 HP

Eye 6 (Type D)
With slot, no bushing



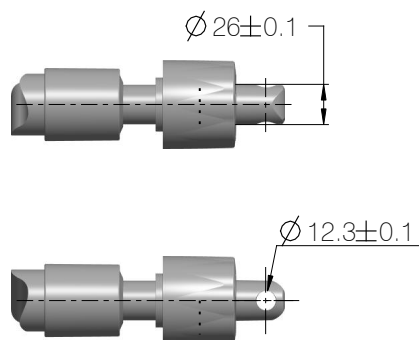
Eye 7 (Type D + option B)
With slot, with bushing



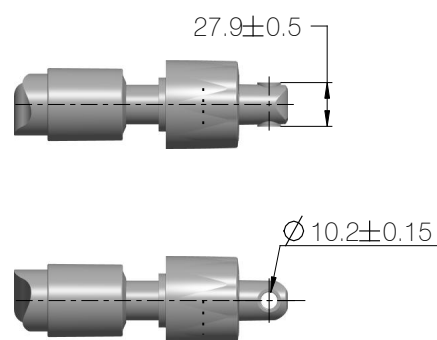
Drawing no.: 0404021

Piston rod eyes for LA40 PL

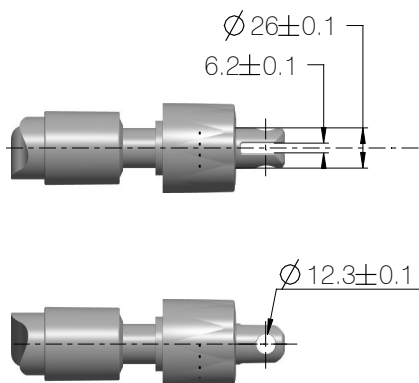
Eye 5 (Type F)
Solid, no bushing



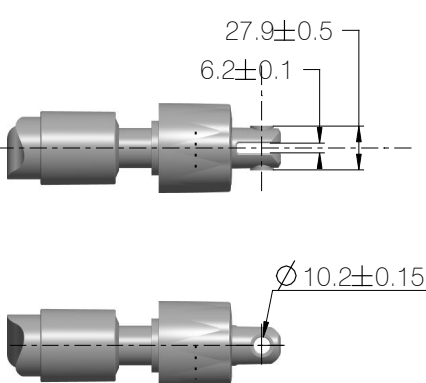
Eye 5 (Type F + option B)
Solid, with bushing



Eye 5 (Type G)
With slot, no bushing



Eye 5 (Type G + option B)
With slot, with bushing

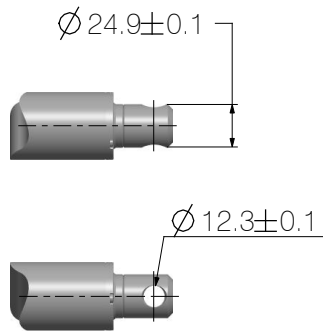


Drawing no.: 0404022

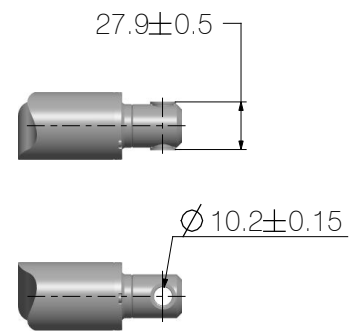


Piston rod eyes for LA40 QR and LA40 QR + Damper

Eye 2 (Type C)
Solid, no bushing



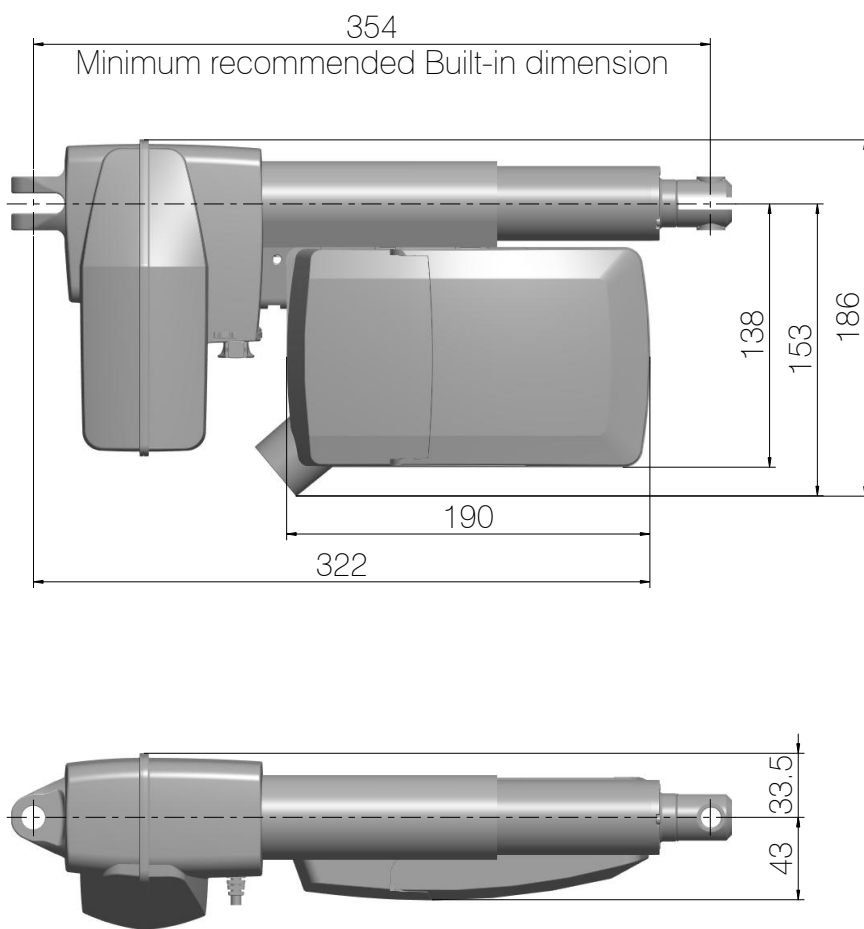
Eye 4 (Type C + option B)
Solid, with bushing



Drawing no.: 0404006

Mounting examples

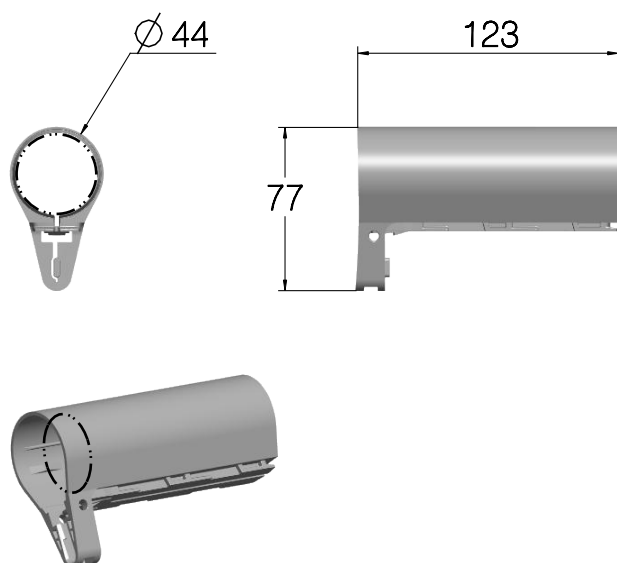
LA40 Std. mounted with CA30-CA40 control boxes



Drawing no.: 1013W4002

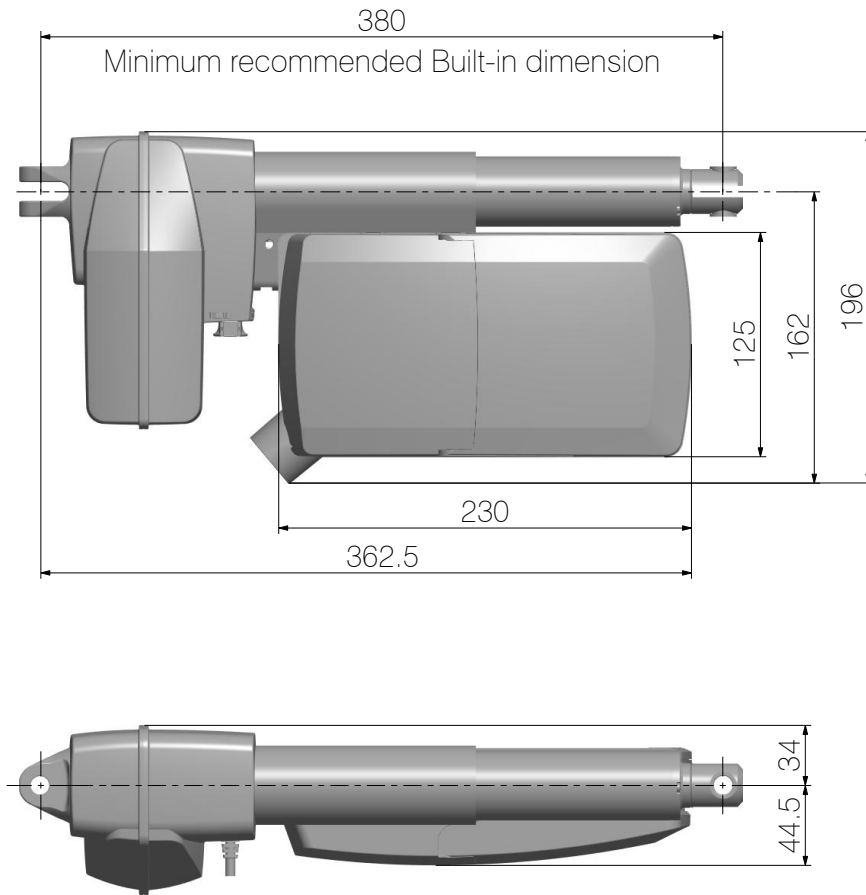
CA30-CA40/LA40 mounting bracket

Article no.: 1015W1002



Drawing no.: 10134002

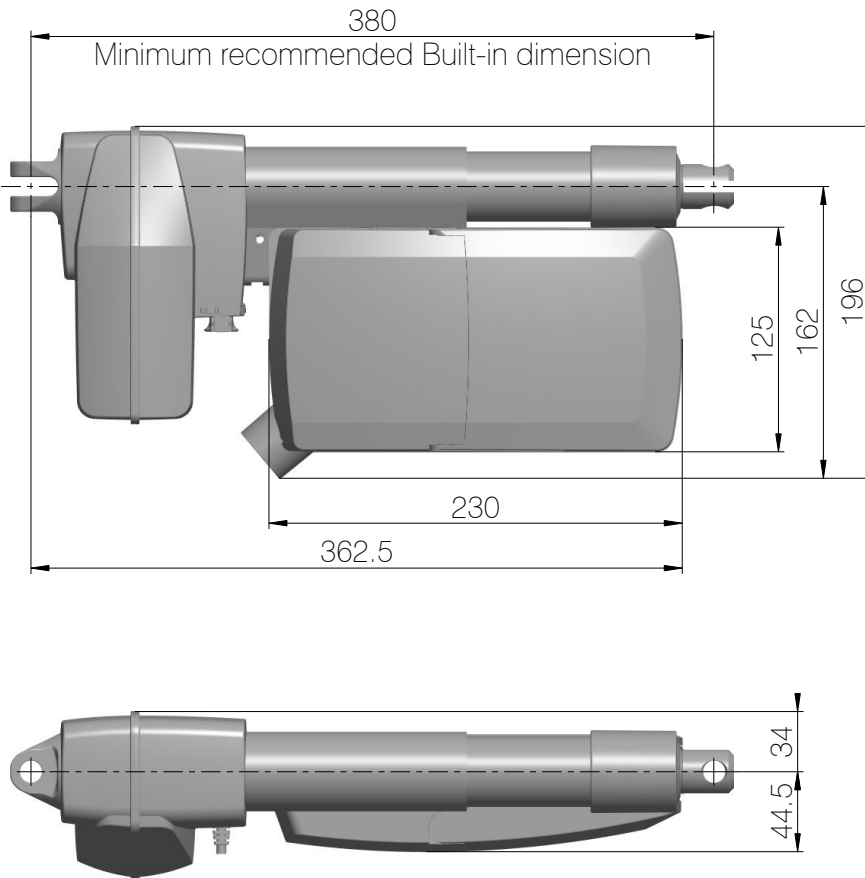
LA40 Std. mounted with CO control boxes



Drawing no. 0404006



LA40 HP mounted with CO control boxes



Drawing no. 0404021



Information

- Mounting bracket must be ordered together with LA40 HP. It is not possible to install the mounting bracket afterwards.



Control box combination overview

Combination	Minimum BID	Bracket article number
LA40/CA30-CA40	354 mm	1015W1002
LA40/CO61-CO71-CO41-CA63-CO53	394 mm	1015W1002
LA40/CB6	380 mm	40KIT-003*
LA40 HP/CO61-CO71-CO41-CA63-CO53	380 mm	1015W1002

*40KIT-003 consists of:

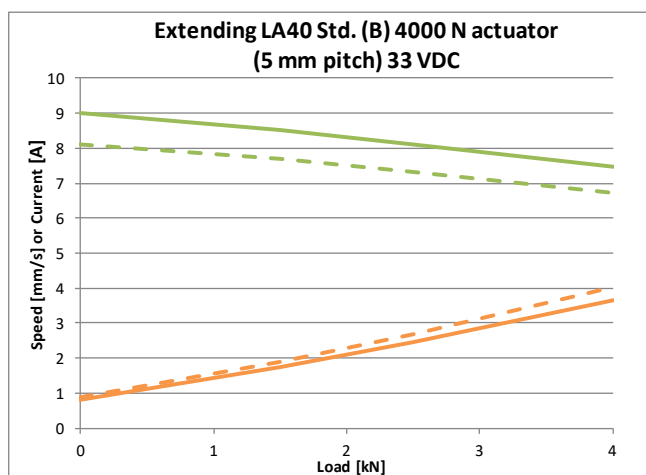
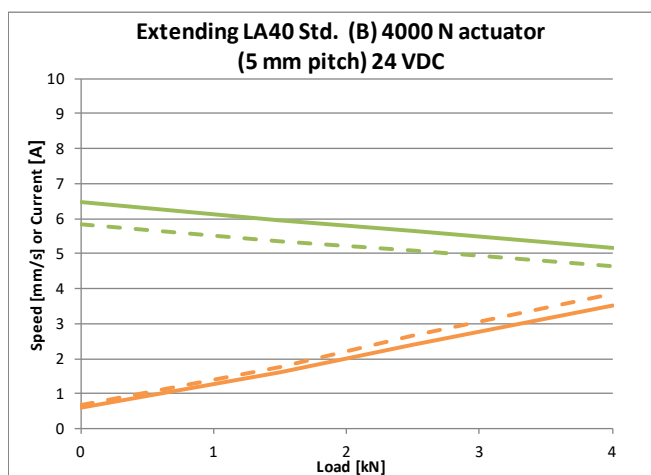
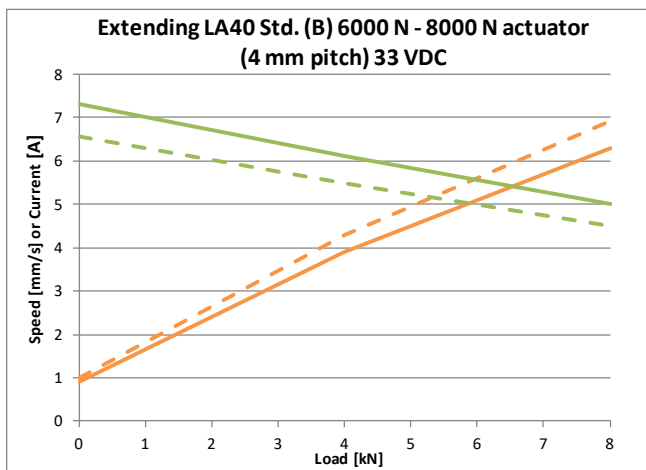
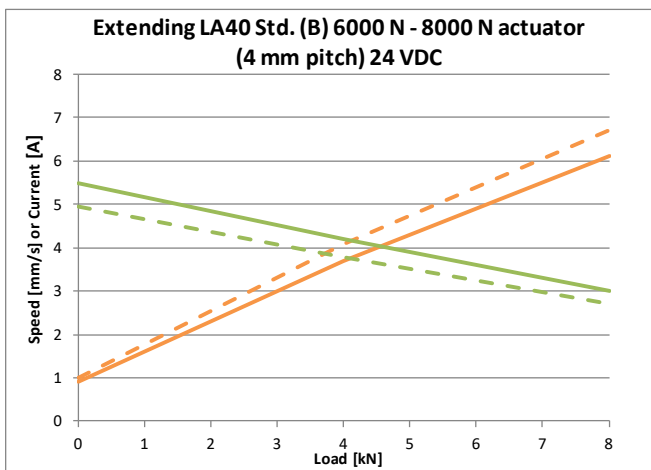
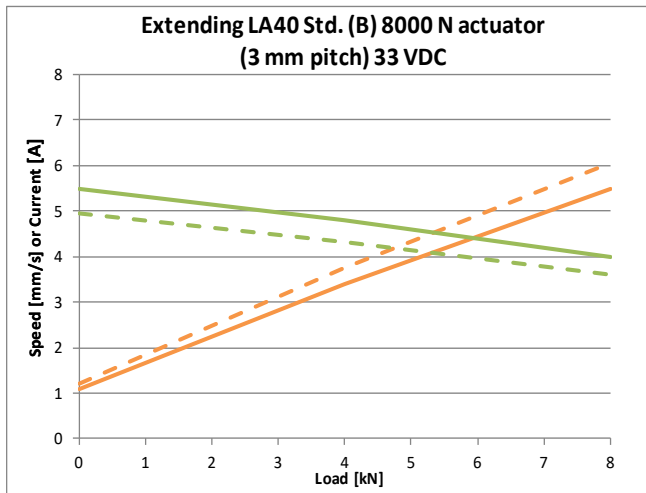
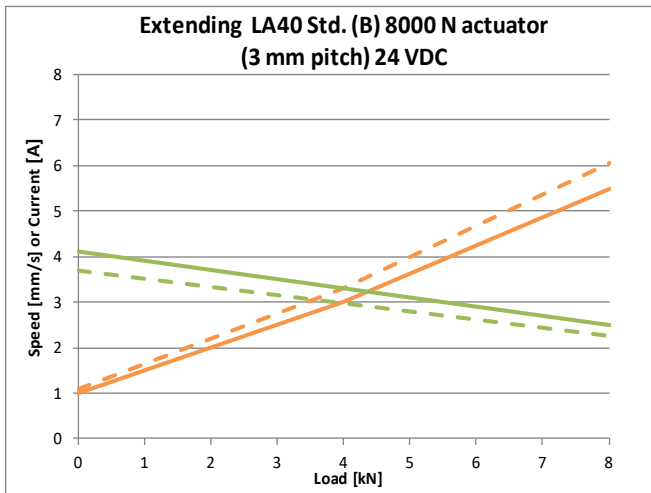
1. 1 x 0401017-A (LA40 clip for adapter RAL7035)
2. 1 x 0401080-A (LA40 CB6/CB6S adapter RAL7035)



Load curves

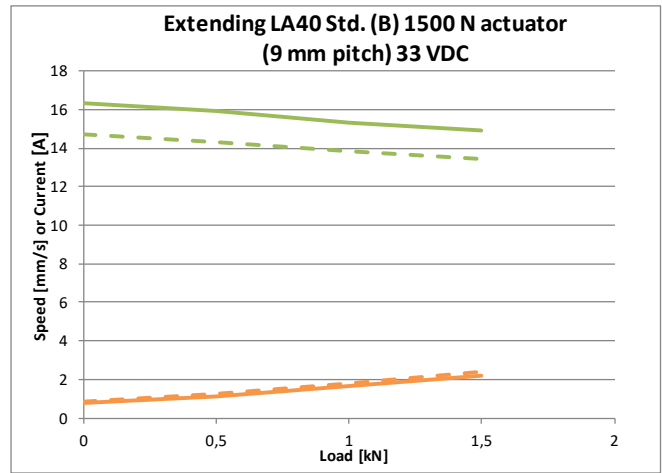
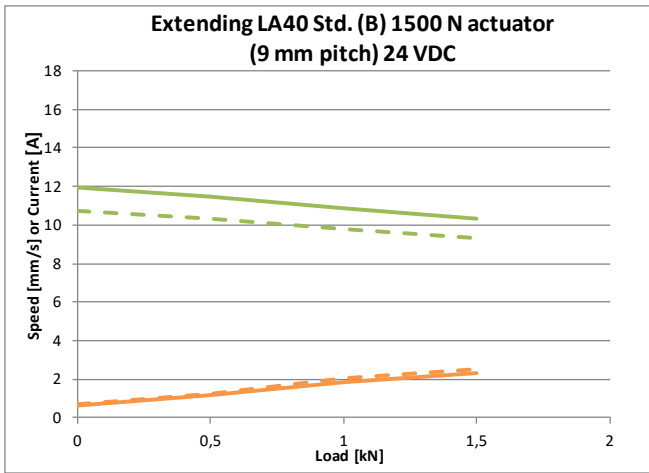
LA40 Standard, motor type B

- Typical Current
- - - Max Current
- Typical Speed
- - - Min Speed



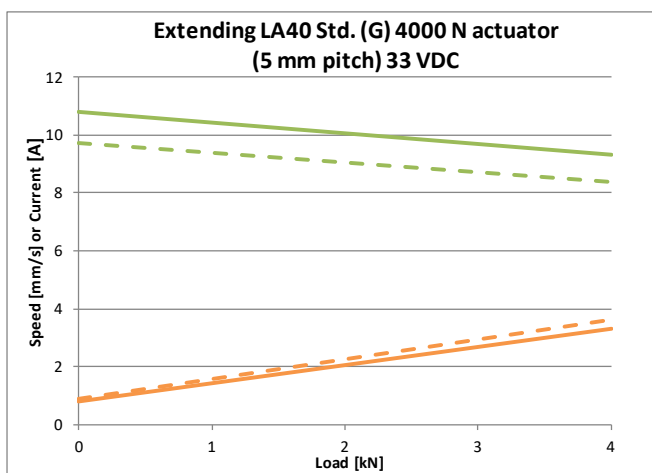
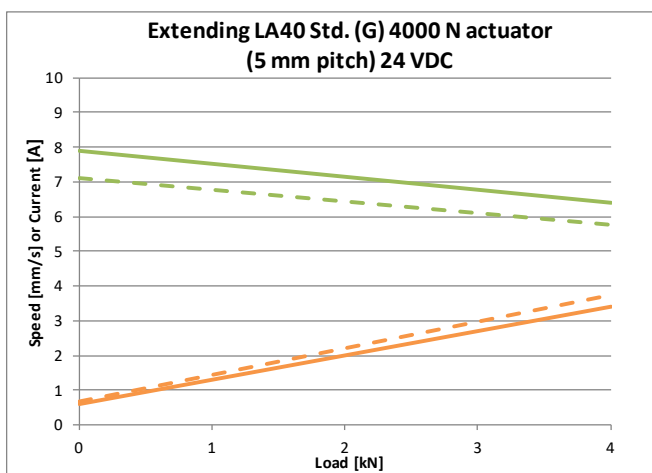
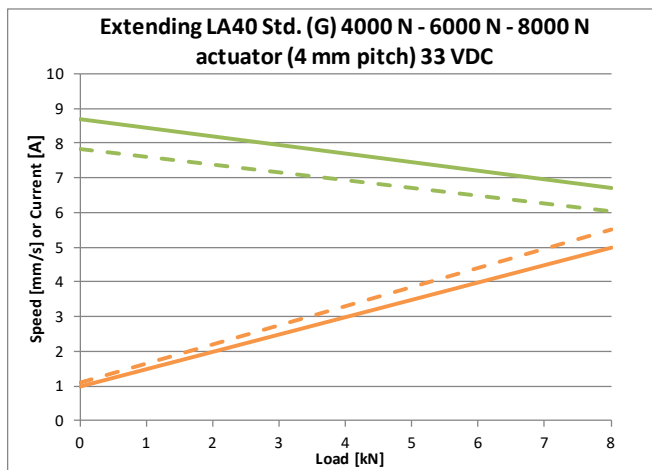
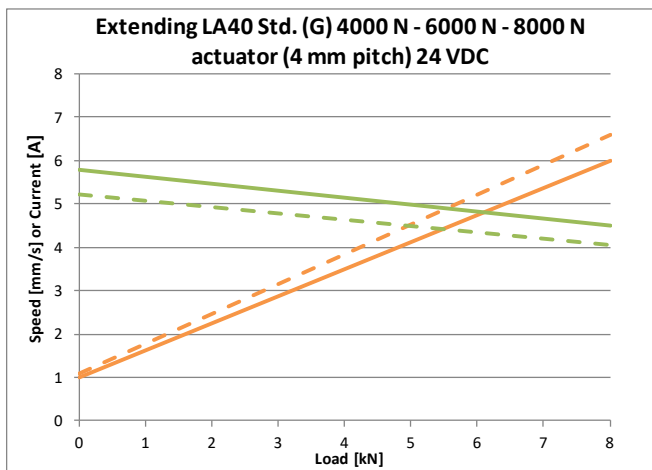
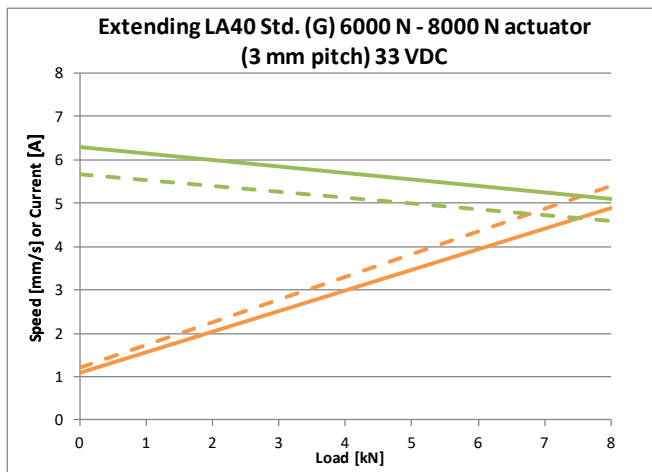
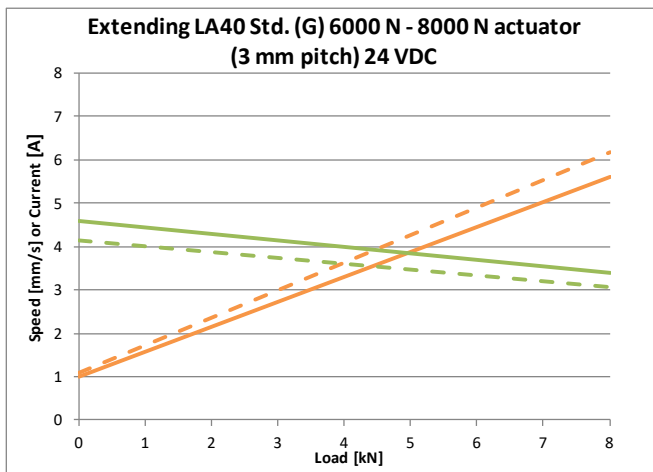
LA40 Standard, motor type B

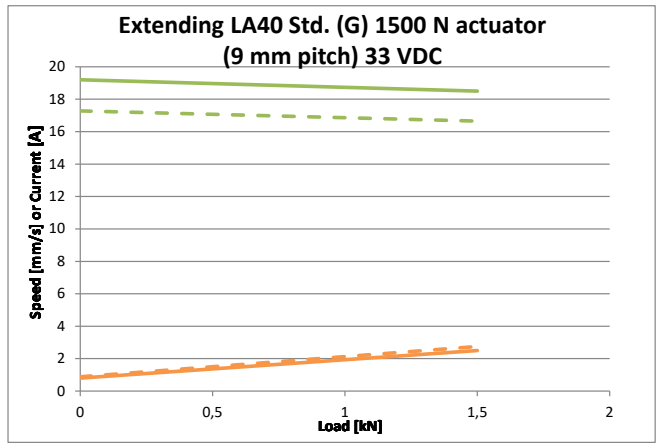
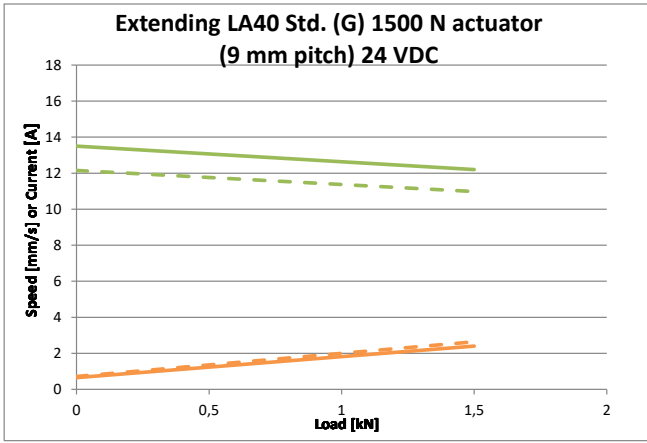
- Typical Current
- - - Max Current
- Typical Speed
- - - Min Speed



LA40 Standard, motor type G

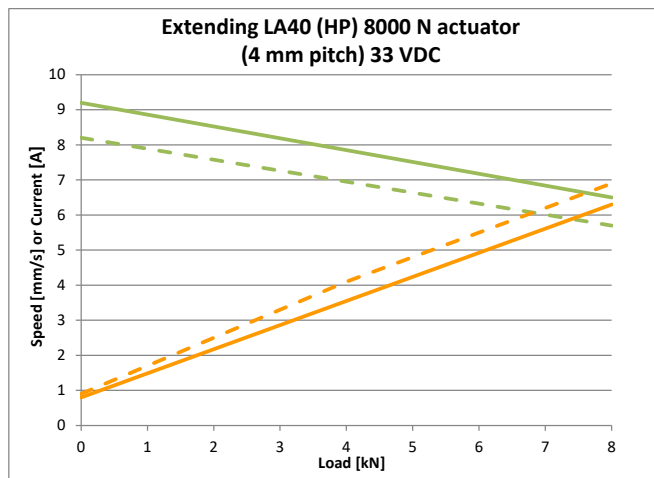
- Typical Current
- - - Max Current
- Typical Speed
- - - Min Speed



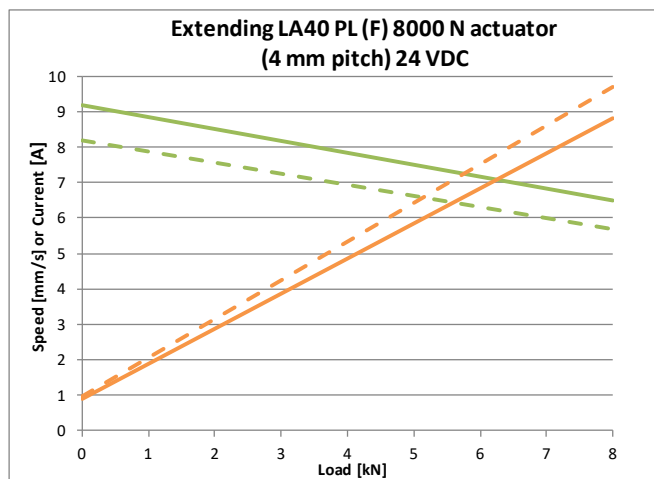


LA40 HP, motor type G

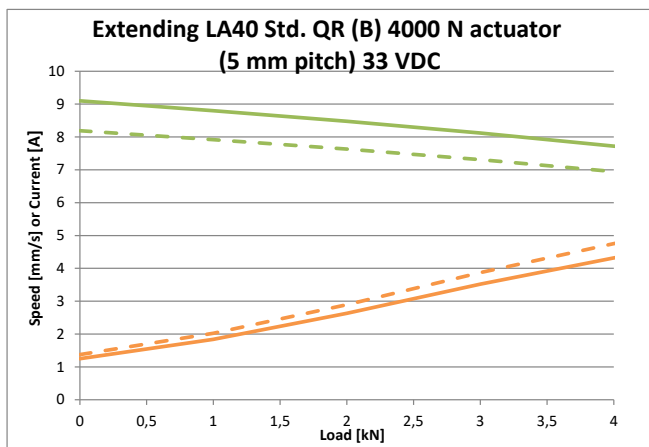
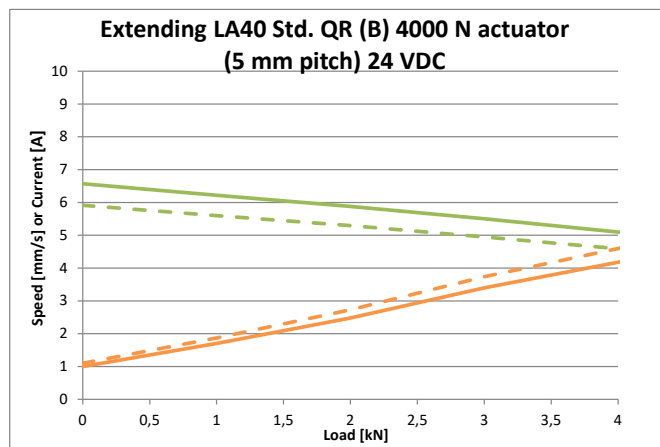
- Typical Current
- - - Max Current
- Typical Speed
- - - Min Speed



LA40 PL, motor type F



LA40 QR, motor type B



Contacts

FACTORIES

Denmark - Headquarters
 LINAK A/S
 Phone: +45 73 15 15 15
 Fax: +45 74 45 80 48
 Fax (Sales): +45 73 15 16 13
 Web: www.linak.com

China
 LINAK (Shenzhen) Actuator Systems, Ltd.
 Phone: +86 755 8610 6656
 Phone: +86 755 8610 6990
 Web: www.linak.cn

Slovakia
 LINAK Slovakia s.r.o.
 Phone: +421 51 7563 444
 Web: www.linak.sk

Thailand
 LINAK APAC Ltd.
 Phone: +66 33 265 400
 Web: www.linak.com

USA
 LINAK U.S. Inc.
 Americas Headquarters
 Phone: +1 502 253 5595
 Fax: +1 502 253 5596
 Web: www.linak-us.com
 www.linak-latinamerica.com

SUBSIDIARIES

Australia
 LINAK Australia Pty. Ltd
 Phone: +61 3 8796 9777
 Fax: +61 3 8796 9778
 E-mail: sales@linak.com.au
 Web: www.linak.com.au

Austria
 LINAK Zweigniederlassung - Österreich (Wien)
 Phone: +43 (1) 890 7446
 Fax: +43 (1) 890 744615
 E-mail: info@linak.de
 Web: www.linak.at - www.linak.hu

Belgium
 LINAK Actuator-Systems NV/SA
 (Belgium & Luxembourg)
 Phone: +32 (0)9 230 01 09
 E-mail: beinfo@linak.be
 Web: www.linak.be - www.fr.linak.be

Brazil
 LINAK Do Brasil Comércio De Atuadores Ltda.
 Phone: +55 (11) 2832 7070
 Fax: +55 (11) 2832 7060
 E-mail: info@linak.com.br
 Web: www.linak.com.br

Canada
 LINAK Canada Inc.
 Phone: +1 502 253 5595
 Fax: +1 416 255 7720
 E-mail: info@linak.ca
 Web: www.linak-us.com

Czech Republic
 LINAK C&S s.r.o.
 Phone: +42 058 174 1814
 Fax: +42 058 170 2452
 E-mail: info@linak.cz
 Web: www.linak.cz - www.linak.sk

Denmark - International
 LINAK International
 Phone: +45 73 15 15 15
 E-mail: info@linak.com
 Web: www.linak.com

Denmark - Sales
 LINAK Danmark A/S
 Phone: +45 86 80 36 11
 Fax: +45 86 82 90 51
 E-mail: linak@linak-silkeborg.dk
 Web: www.linak.dk

Finland
 LINAK OY
 Phone: +358 10 841 8700
 E-mail: linak@linak.fi
 Web: www.linak.fi

France
 LINAK France E.U.R.L
 Phone: +33 (0) 2 41 36 34 34
 Fax: +33 (0) 2 41 36 35 00
 E-mail: linak@linak.fr
 Web: www.linak.fr

Germany
 LINAK GmbH
 Phone: +49 6043 9655 0
 Fax: +49 6043 9655 60
 E-mail: info@linak.de
 Web: www.linak.de

India
 LINAK A/S India Liaison Office
 Phone: +91 120 4531797
 Fax: +91 120 4786428
 E-mail: info@linak.in
 Web: www.linak.in

Ireland
 LINAK UK Limited (Ireland)
 Phone: +44 (0)121 544 2211
 Fax: +44 (0)121 544 2552
 +44 (0)796 855 1606 (UK Mobile)
 +35 387 634 6554 (Rep.of Ireland Mobile)
 E-mail: sales@linak.co.uk
 Web: www.linak.co.uk

Italy
 LINAK ITALIA S.r.l.
 Phone: +39 02 48 46 33 66
 Fax: +39 02 48 46 82 52
 E-mail: info@linak.it
 Web: www.linak.it

Japan
 LINAK K.K.
 Phone: 81-45-533-0802
 Fax: 81-45-533-0803
 E-mail: linak@linak.jp
 Web: www.linak.jp

Malaysia
 LINAK Actuators Sdn. Bhd.
 Phone: +60 4 210 6500
 Fax: +60 4 226 8901
 E-mail: info@linak-asia.com
 Web: www.linak.my

Netherlands
 LINAK Actuator-Systems B.V.
 Phone: +31 76 5 42 44 40 /
 +31 76 200 11 10
 E-mail: info@linak.nl
 Web: www.linak.nl

New Zealand
 LINAK New Zealand Ltd
 Phone: +64 9580 2071
 Fax: +64 9580 2072
 E-mail: nzsales@linak.com.au
 Web: www.linak.com.au

Norway
 LINAK Norge AS
 Phone: +47 32 82 90 90
 E-mail: info@linak.no
 Web: www.linak.no

Poland
 LINAK Polska
 LINAK Danmark A/S (Spółka Akcyjna)
 Phone: +48 22 295 09 70 /
 +48 22 295 09 71
 E-mail: info@linak.pl
 Web: www.linak.pl

Republic of Korea
 LINAK Korea Ltd.
 Phone: +82 2 6231 1515
 Fax: +82 2 6231 1516
 E-mail: info@linak.kr
 Web: www.linak.kr

Slovakia
 LINAK Slovakia S.R.O.
 Phone: +421 51 7563 444
 Web: www.linak.sk

Spain
 LINAK Actuadores, S.L.U
 Phone: +34 93 588 27 77
 Fax: +34 93 588 27 85
 E-mail: esma@linak.es
 Web: www.linak.es

Sweden
 LINAK Scandinavia AB
 Phone: +46 8 732 20 00
 Fax: +46 8 732 20 50
 E-mail: info@linak.se
 Web: www.linak.se

Switzerland
 LINAK AG
 Phone: +41 43 388 31 88
 Fax: +41 43 388 31 87
 E-mail: info@linak.ch
 Web: www.linak.ch - www.fr.linak.ch
 www.it.linak.ch

Taiwan
 LINAK (Shenzhen) Actuator systems Ltd.
 Taiwan Representative office
 Phone: +886 2 272 90068
 Fax: +886 2 272 90096
 E-mail: sales@linak.com.tw
 Web: www.linak.com.tw

Turkey
 LINAK İth. İhr. San. ve Tic. A.Ş.
 Phone: +90 312 4726338
 Fax: +90 312 4726635
 E-mail: info@linak.com.tr
 Web: www.linak.com.tr

United Kingdom
 LINAK UK Limited
 Phone: +44 (0)121 544 2211
 Fax: +44 (0)121 544 2552
 E-mail: sales@linak.co.uk
 Web: www.linak.co.uk

DISTRIBUTORS

Argentina
 Novotec Argentina SRL
 Phone: 011-4303-8989 / 8900
 Fax: 011-4032-0184
 E-mail: info@novotecargentina.com
 Web: www.novotecargentina.com

Colombia
 MEM Ltda
 Phone: +[57] (1) 334-7666
 Fax: +[57] (1) 282-1684
 E-mail: servicioalcliente@memlda.com.co
 Web: www.mem.net.co

India
 Mechatronics Control Equipments India Pvt Ltd
 Phone: +91-44-28558484, 85
 E-mail: bala@mechatronicscontrol.com
 Web: www.mechatronicscontrol.com

Indonesia
 PT. Himalaya Everest Jaya
 Phone: +6 221 544 8956 /+6 221 544 8965
 Fax: +6 221 619 1925
 Fax (Sales): +6 221 619 4658
 E-mail: hejplastic-div@centrin.net.id
 Web: www.hej.co.id

Israel
 NetivTech LTD
 Phone: +972 55-2266-535
 Fax: +972 2-9900-560
 Email: info@NetivTech.com
 Web: www.netivtech.com

Singapore
 Servo Dynamics Pte Ltd
 Phone: +65 6844 0288
 Fax: +65 6844 0070
 E-mail: servodynamics@servo.com.sg

South Africa
 Industrial Specialised Applications CC
 Phone: +27 011 466 0346
 E-mail: gartht@isagroup.co.za
 Web: www.isaza.co.za

United Arab Emirates
 Mechatronics
 Phone: +971 4 267 4311
 Fax: +971 4 267 4312
 E-mail: mechtron@emirates.net.ae

Terms of use

LINAK® takes great care in providing accurate and up-to-date information on its products. However, the user is responsible for determining the suitability of LINAK products for a specific application. Due to continual development, LINAK products are subject to frequent modifications and changes. LINAK reserves the rights to conduct modifications, updates, and changes without any prior notice. For the same reason, LINAK cannot guarantee the correctness and actual status of imprinted information on its products.

LINAK uses its best efforts to fulfil orders. However, for the reasons mentioned above, LINAK cannot guarantee availability of any particular product at any given time. LINAK reserves the right to discontinue the sale of any product displayed on its website or listed in its catalogues or in other written material created and produced by LINAK, LINAK subsidiaries, or LINAK affiliates. All sales are subject to the 'Standard Terms of Sale and Delivery for LINAK A/S' available on LINAK websites. LINAK and the LINAK logotype are registered trademarks of LINAK A/S. All rights reserved.