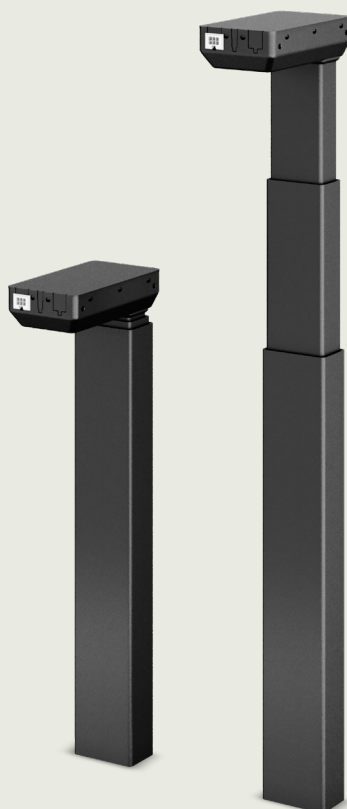


DL6

Data Sheet





The DESKLIFT™ DL6 is a compact three-part lifting column, which is a perfect choice for a wide range of different desk applications ranging from industry to office desks. The three-part construction ensures a short installation dimension combined with a long stroke length making the DL6 the optimal choice for the desk no matter the height of the person using it. The middle profile of the DL6 moves synchronously so the profiles are always in the same height optimising the desk design and the stability. The DL6 has a compact motor housing, which is almost invisible in the tabletop construction, and the column is very sturdy. The DL6 has the same outer dimensions (50 x 80 mm) and motor-housing mounting holes as the two-part DL5 column, which makes them fit the same top frame and foot constructions, including the Kick & Click™ top frame. By means of two cross members, two desks can be joined together to form a bench solution. The DL6 is available in several standard colours to fit into a wide range of desk designs.

The wide DL6 product programme offers various options such as:

- PLUS™ - a design-optimised version
- PLUS™ versions prepared for Click-on Feet
- PLUS™ High-speed - fast height adjustment and optimised design
- PLUS™ High-speed XL - fast height adjustment, optimised design, and long stroke length
- PIEZO™ (collision protection) minimising the risk of damage to a desk caused by collision with an obstacle
- versions for bench solutions

The columns are controlled by a DESKLINE® control box (CBD). The control box ensures optimal parallel drive and a pleasantly low sound level. Depending on the control box, the columns can be used as a single column or with 2, 3 or 4 columns in parallel systems, or up to 16 columns in multi-parallel systems. A variety of desk panels can be used for adjusting the desk. A Desk Sensor™ 1 anti-collision dongle can be plugged into the control box to limit material damage to the desk or an object in case a collision occurs during driving of the desk.

Features/Options/Compatibility/Usage

Features

- Three-part motor-housing column
- In combination with CBD6S:

| Parameter | With CBD6S (300 W or 200 W) | |
|------------------------|-----------------------------|---------|
| Max. speed (unloaded) | 38 mm/s | 23 mm/s |
| Max. load (per column) | 800 N | 1200 N |
| Self-lock (per column) | 800 N | 1200 N |

- Installation dimension: 560 mm
518 mm (BIFMA)
- Stroke length: 650 mm
665 mm (BIFMA)
- Weight: Approximately 7.5 kg per column
- Dimensions column: 50 x 80 mm (see also [Dimension drawings](#)).
- Dimension motor housing: 177 x 97 x 46 mm
- Four M6 and two M8 threaded holes in bottom plate for mounting of feet
- Colour: Available in black (RAL 9005), grey (RAL 9006) or white (RAL 9016)
- Low sound level

Options

- PIEZO™: Integrated sensor minimising the risk of damage to a desk caused by squeezing or blocking it in upward or downward direction
- PLUS™ columns:
 - Invisible gliding pads and a smooth outer profile with no punch marks
 - Prepared for Click-on Feet
- High-speed: PLUS™ columns available as high-speed variants for fast height adjustment (in combination with CBD6S with software SW03002024 version 1.03 or newer)

| Parameter | With CBD6S (300 W) | With CBD6S (200 W) |
|------------------------|--------------------|--------------------|
| Max. speed (unloaded) | 80 mm/s | 60 mm/s |
| Max. load (per column) | 700 N | |
| Self-lock (per column) | 1200 N | |

- High-speed XL: PLUS™ High-speed columns are available in variants with long stroke length

| Parameter | With CBD6S (300 W) | With CBD6S (200 W) |
|------------------------|--------------------|--------------------|
| Max. speed (unloaded) | 80 mm/s | 60 mm/s |
| Built-in dimension | 785 mm | |
| Stroke length | 1100 mm | |
| Max. load (per column) | 600 N | |
| Self-lock (per column) | 1200 N | |

- Available with bench bracket (two versions) and with mounting bracket for a crossbar, see [Dimension drawings](#))
- Customised colours
- Available as DESKLIFT™ SetPack

Compatibility

- DESKLINE® control boxes
- DESKLINE® controls
- Kick & Click™ top frame
- DESKLIFT™ Feet; PLUS™ columns also compatible with Click-on Feet

Usage

- Single or 2, 3 or 4 parallel drive or even multi-parallel with up to 16 columns
- Duty cycle: 10% ≈ max. 2 minutes continuous use at full load, followed by 18 minutes pause
- For indoor use in dry locations

| Parameter | Operation | Storage and transportation |
|----------------------|-----------------------------|-----------------------------|
| Temperature | 10 to 40 °C | -10 to +50 °C |
| Relative humidity | 20% to 80% - non-condensing | 20% to 80% - non-condensing |
| Atmospheric pressure | 800 to 1060 hPa | 700 to 1060 hPa |
| Altitude | Max. 2000 m | N/A |

For system compliance, please refer to the Declaration of Conformity in the [User Manual](#).

Ordering

| | | |
|--------------------------|------------|---|
| | DL6 | |
| SPINDLE TYPE | 0 | 0 = 20 mm pitch (Standard) 1 = 12 mm pitch (1200 N) 3 = 30 mm pitch (High-speed) * |
| OPTION | 0 | 0 = Standard |
| MOUNTING BRACKET | 0 | 0 = None 1 = 120 x 40 x 8 mm (with 2 x M8) L = Bench bracket on left narrow side R = Bench bracket on right narrow side V = Bench bracket on left narrow side ** H = Bench bracket on right narrow side ** |
| COLOUR | B | A = Grey (RAL 9006) B = Black (RAL 9005) D = White (RAL 9016) |
| DESIGN | N | N = Standard P = PLUS series Z = PLUS columns prepared for Click-on Foot |
| MOTOR TYPE | 0 | 0 = Standard E = PIEZO T = High-speed *** V = High-speed + PIEZO *** |
| STROKE LENGTH | 650 | 650 = 650 mm 665 = 665 mm (BIFMA) 1100 = 1100 mm (High-speed XL) * |
| INSTALLATION DIM. | 560 | 560 = 560 mm 518 = 518 mm (BIFMA) 785 = 785 mm (High-speed XL) * |
| DL6000BN0650560 | | |

*: Always with motor type option T or V

** : Columns with bench bracket compatible with the LINAK cross member set for a complete bench solution.
Cross members must be ordered separately

***: Always with PLUS™ columns and spindle type 30 mm pitch



All cables for creating a fully connected DESKLINE® system must be ordered separately. We offer a range of different versions and lengths. To get information such as ordering number, and colour and length of the cables, please contact your local LINAK.



If you want to operate a 1200 N column **without** PIEZO™ with a desk panel with display, you must configure the actuator type in the control box to ensure the correct read-out.

If you want to operate a 1200 N column **with** PIEZO™, do not configure the actuator type. This column has IID and will automatically be detected as the right type of column.



A column in BIFMA version is less stable in the full stroke length compared to a standard column as it has less overlap between the profiles.

Technical data

Performance curves

The following data is measured in connection with 2 to 4 lifting columns and control box CBD6S. The desk is driving upwards.



The curves below apply to a centrally placed load. With moment load, there will be increased friction in the columns, which will reduce the lifting force correspondingly.

DL6 800 N (20 mm spindle)

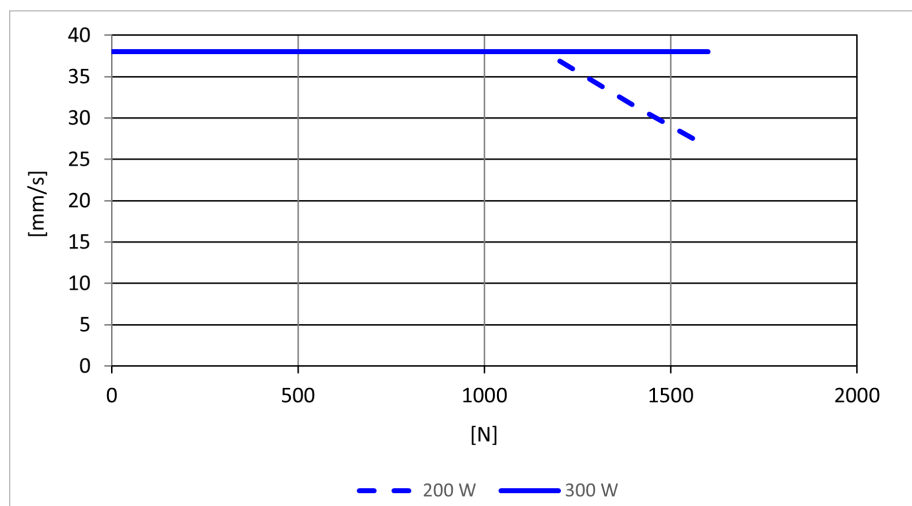


Figure 1 Two columns (equally loaded) - 200 W / 300 W

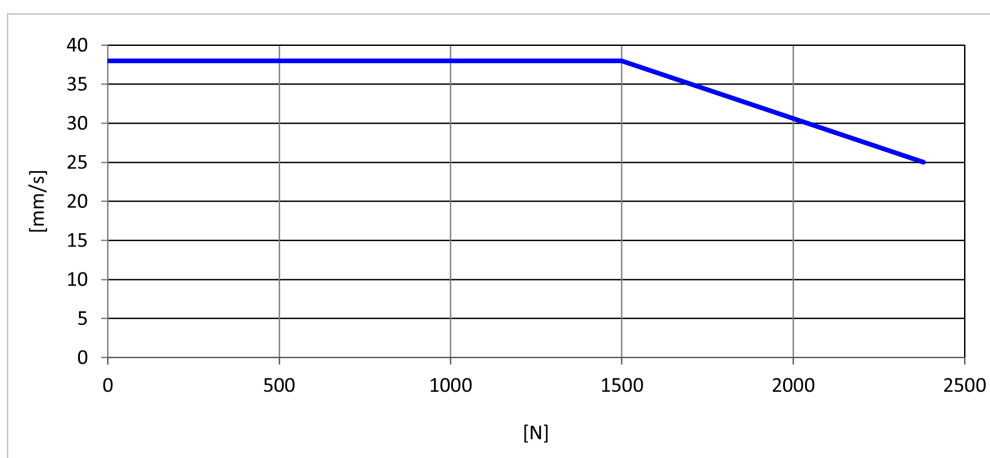


Figure 2 Three columns (equally loaded) with CBD6S - 300 W

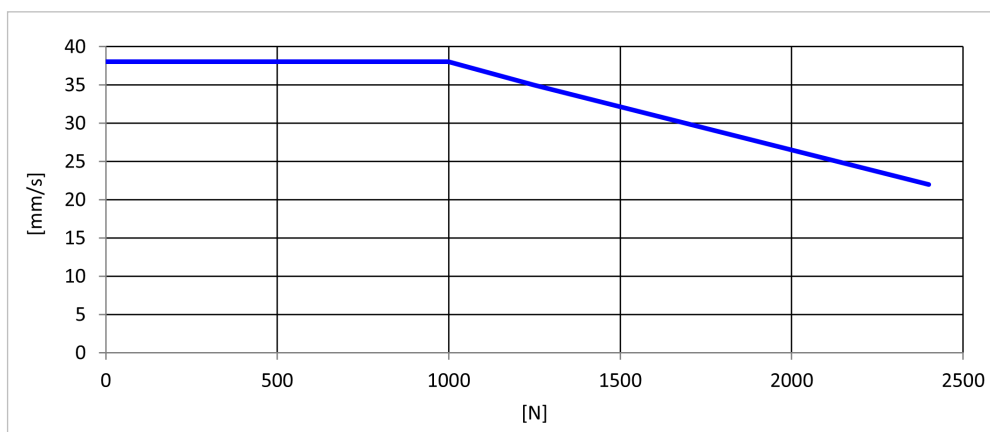


Figure 3 Four columns (equally loaded) with CBD6S - 300 W

High-speed columns with CBD6S

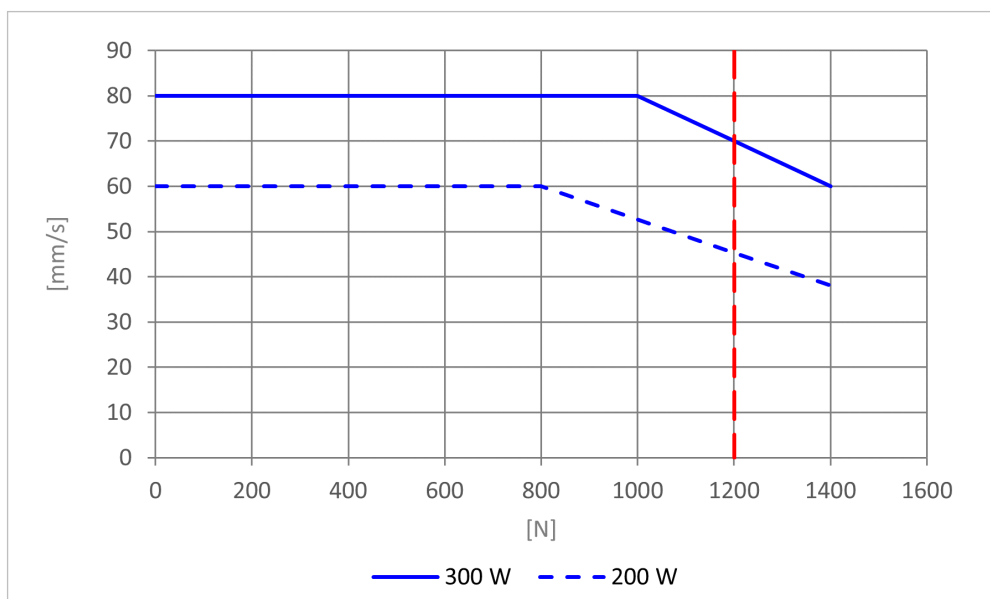


Figure 4 Two High-speed columns (equally loaded) with CBD6S - 200 W / 300 W

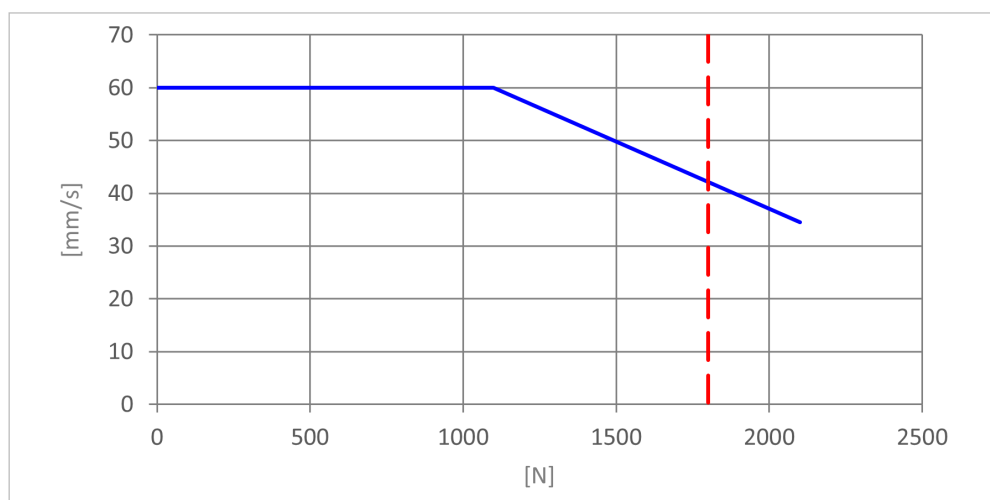


Figure 5 Three High-speed columns (equally loaded) with CBD6S - 300 W

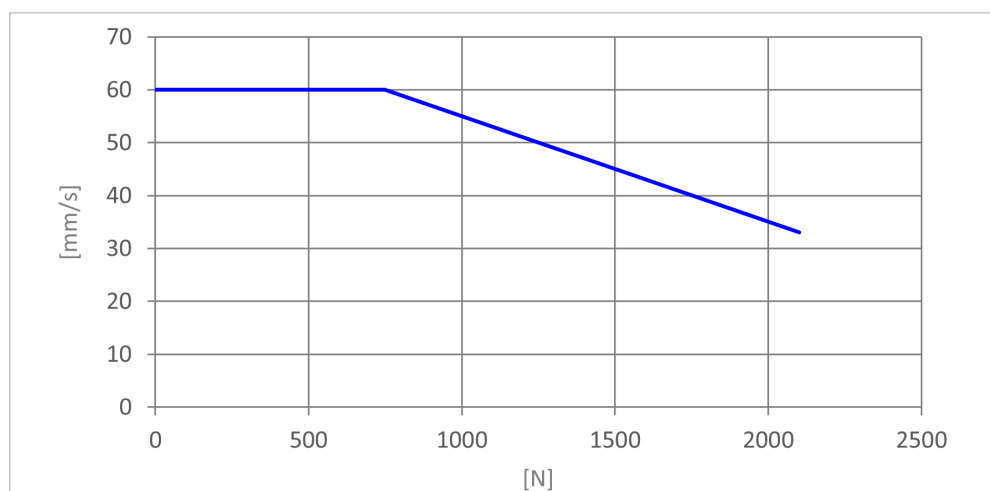


Figure 6 Four High-speed columns (equally loaded) with CBD6S - 300 W



The vertical dotted line indicates the maximum load for High-speed XL columns.

DL6 1200 N (12 mm spindle) with CBD6S

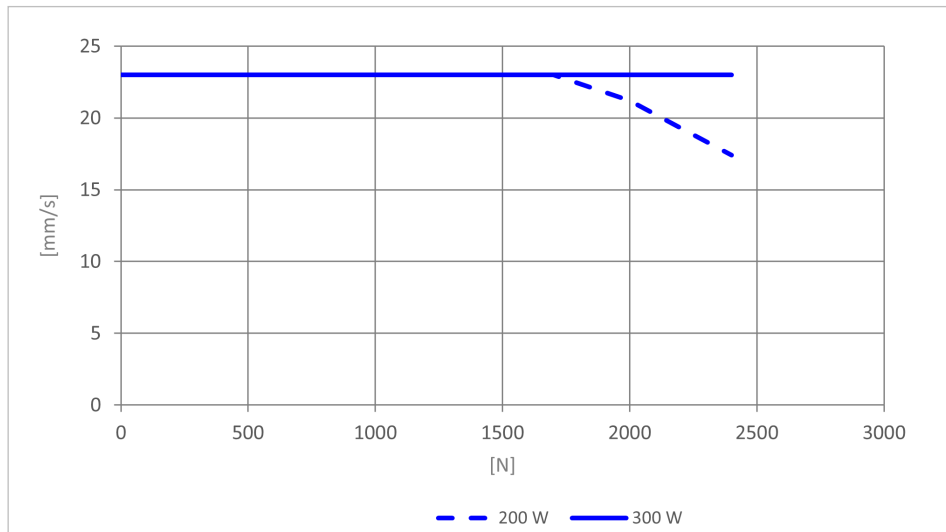


Figure 7 Two columns (equally loaded)

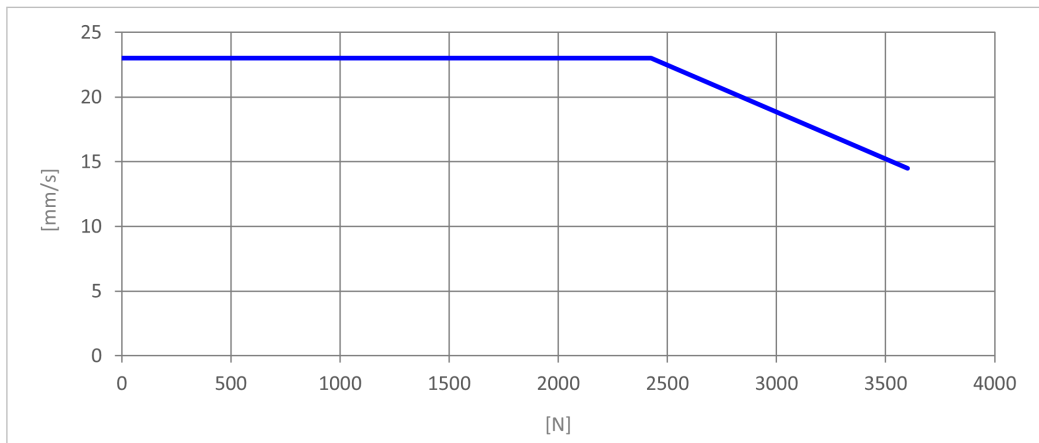


Figure 8 Three columns (equally loaded) with CBD6S - 300 W

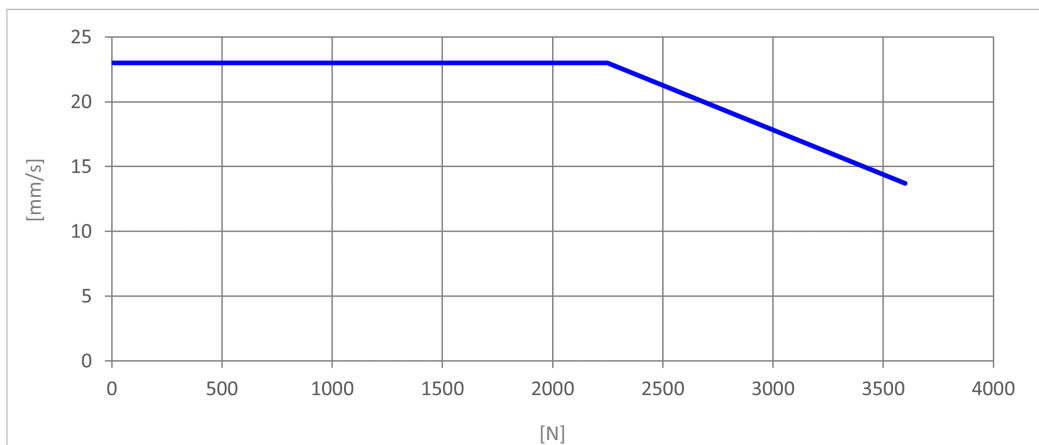


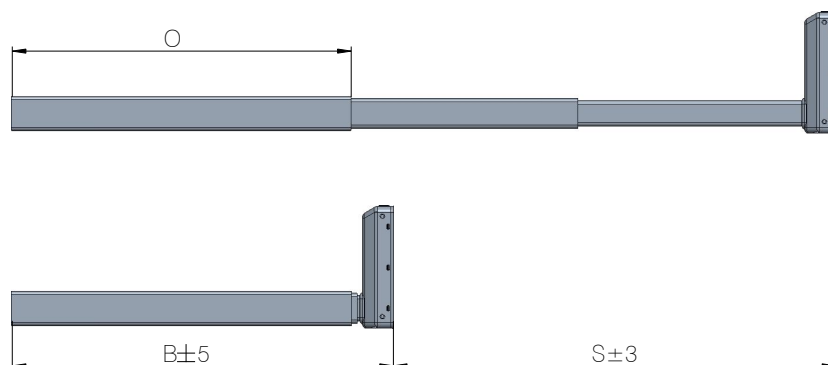
Figure 9 Four columns (equally loaded) with CBD6S - 300 W

Dimension drawings



All dimensions are in mm.

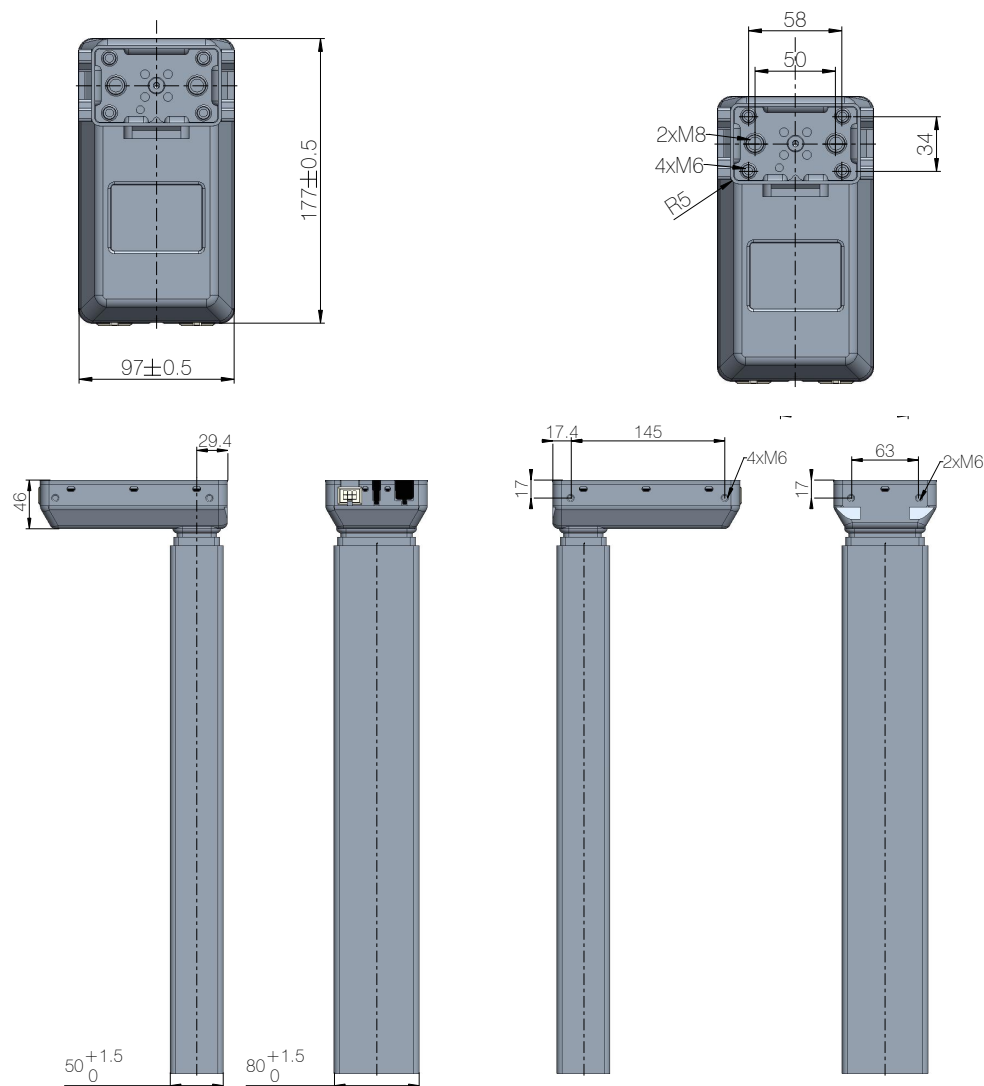
Columns



Drawing no. 1041W7906

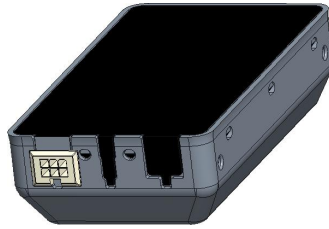
| Version | Combination code | B (Built-in length) | S (Stroke length) | O (Outer profile length) |
|---------------|------------------|---------------------|-------------------|--------------------------|
| Standard | DL6xxxxxx650560 | 560 | 650 | 498 |
| BIFMA | DL6xxxxxx665518 | 518 | 665 | 456 |
| High-speed XL | DL63xxxPx1100785 | 785 | 1100 | 723 |

Figure 10 Built-in length, stroke length, and outer profile length



Drawing no. 1041W7906

Figure 11 Motor-housing, bottom plate, and profile

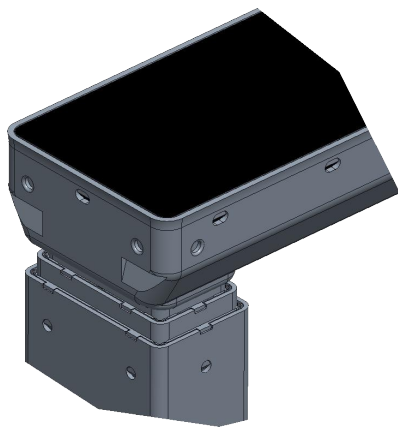


Standard

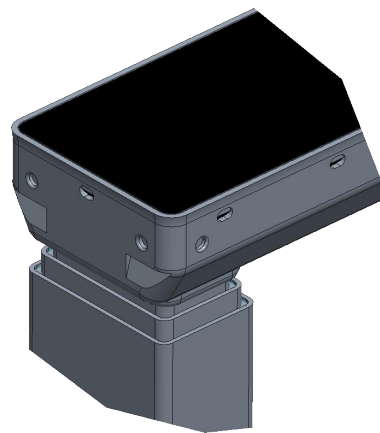
Drawing no. 1041W7906

| Combination code | Type |
|------------------|----------|
| DL6xxxxxxxxxxx | Standard |

Figure 12 Socket combination



Standard

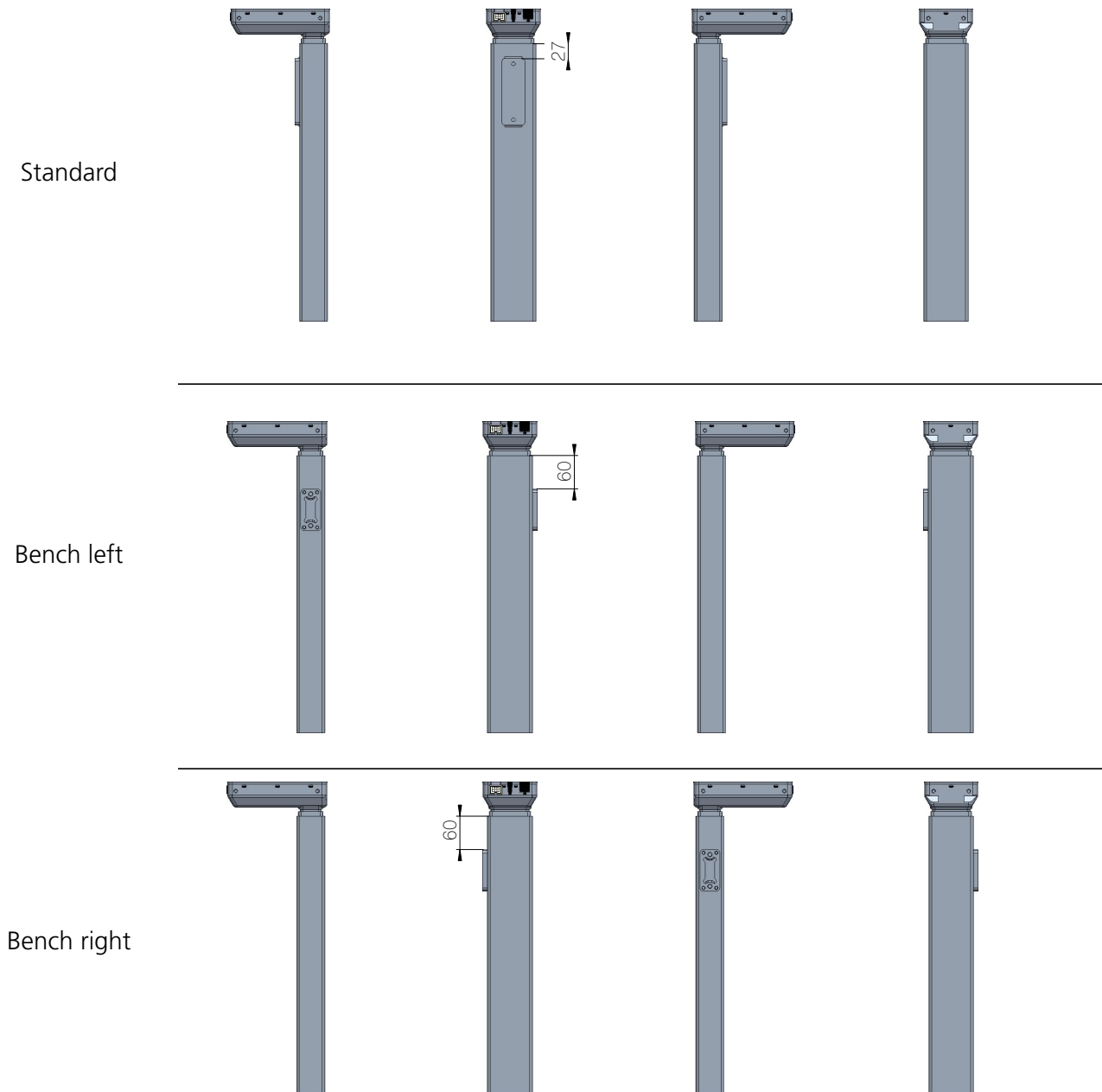


PLUS™

Drawing no. 1041W7906

Figure 13 Profile designs

Bracket options

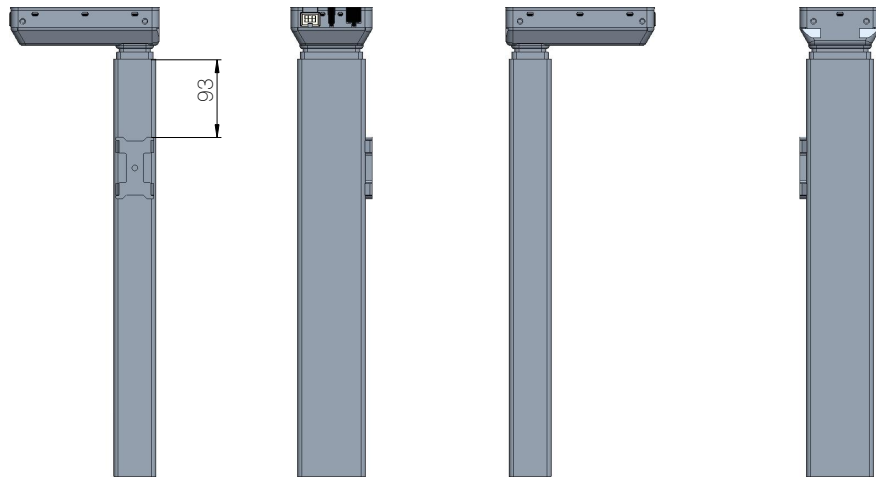


Drawing no. 1041W7906

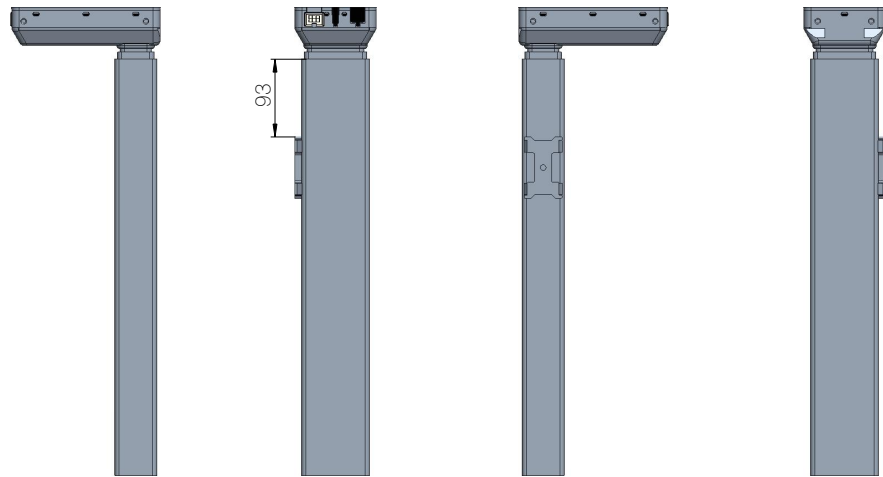
| Combination code | Std bracket | Bench left | Bench right |
|------------------|-------------|------------|-------------|
| DL6xx1xxxxxxxxx | X | | |
| DL6xxLxxxxxxxxx | | X | |
| DL6xxRxxxxxxxxx | | | X |

Figure 14 Bracket options (types standard, L and R)

DESKLINE Bench left



DESKLINE Bench right



Drawing no. 1041W7906

| Combination code | DESKLINE Bench left | DESKLINE Bench right |
|------------------|---------------------|----------------------|
| DL6xxVxxxxxxxxx | X | |
| DL6xxHxxxxxxxxx | | X |

Figure 15 DESKLINE Bench bracket options (types V and H)
(compatible with LINAK cross members)

Brackets

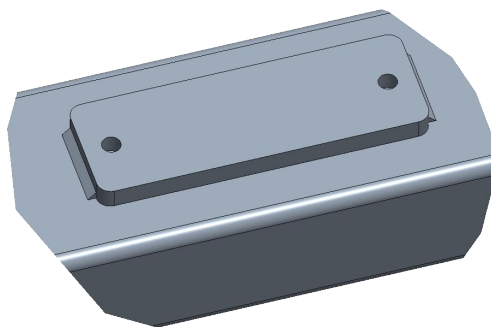


Figure 16 Standard bracket

Drawing no. 1041W7906

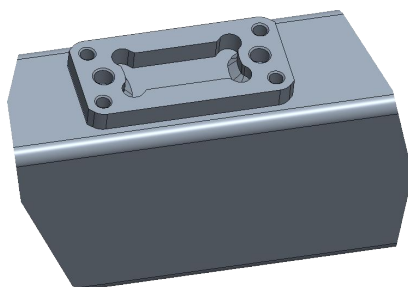


Figure 17 Bench bracket (type L and R)

Drawing no. 1041W7906

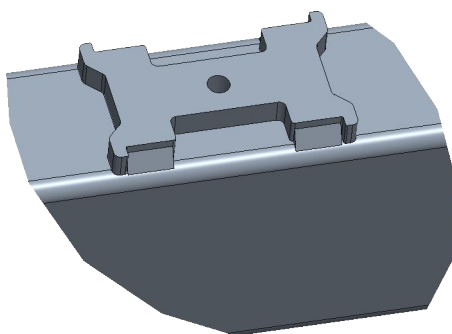
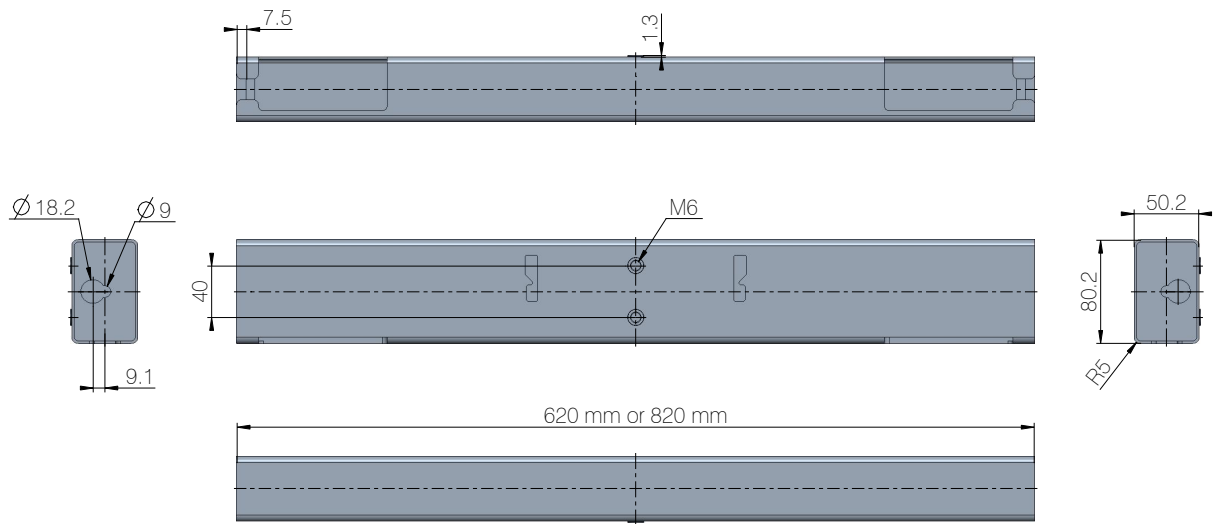


Figure 18 Bench bracket (type V and H) - compatible with LINAK cross members

Drawing no. 1041W7906

Cross members



Drawing no. 1066W4030

Figure 19 Cross member

Contacts

FACTORIES

Denmark - Headquarters
 LINAK A/S
 Phone: +45 73 15 15 15
 Fax: +45 74 45 80 48
 Fax (Sales): +45 73 15 16 13
 Web: www.linak.com

China
 LINAK (Shenzhen) Actuator Systems, Ltd.
 Phone: +86 755 8610 6656
 Phone: +86 755 8610 6990
 Web: www.linak.cn

Slovakia
 LINAK Slovakia s.r.o.
 Phone: +421 51 7563 444
 Web: www.linak.sk

Thailand
 LINAK APAC Ltd.
 Phone: +66 33 265 400
 Web: www.linak.com

USA
 LINAK U.S. Inc.
 Americas Headquarters
 Phone: +1 502 253 5595
 Fax: +1 502 253 5596
 Web: www.linak-us.com
 www.linak-latinamerica.com

SUBSIDIARIES

Australia
 LINAK Australia Pty. Ltd
 Phone: +61 3 8796 9777
 Fax: +61 3 8796 9778
 E-mail: sales@linak.com.au
 Web: www.linak.com.au

Austria
 LINAK Zweigniederlassung - Österreich (Wien)
 Phone: +43 (1) 890 7446
 Fax: +43 (1) 890 744615
 E-mail: info@linak.de
 Web: www.linak.at - www.linak.hu

Belgium
 LINAK Actuator-Systems NV/SA
 (Belgium & Luxembourg)
 Phone: +32 (0)9 230 01 09
 E-mail: beinfo@linak.be
 Web: www.linak.be - www.fr.linak.be

Brazil
 LINAK Do Brasil Comércio De Atuadores Ltda.
 Phone: +55 (11) 2832 7070
 Fax: +55 (11) 2832 7060
 E-mail: info@linak.com.br
 Web: www.linak.com.br

Canada
 LINAK Canada Inc.
 Phone: +1 502 253 5595
 Fax: +1 416 255 7720
 E-mail: info@linak.ca
 Web: www.linak-us.com

Czech Republic
 LINAK C&S s.r.o.
 Phone: +42 058 174 1814
 Fax: +42 058 170 2452
 E-mail: info@linak.cz
 Web: www.linak.cz - www.linak.sk

Denmark - International
 LINAK International
 Phone: +45 73 15 15 15
 E-mail: info@linak.com
 Web: www.linak.com

Denmark - Sales
 LINAK Danmark A/S
 Phone: +45 86 80 36 11
 Fax: +45 86 82 90 51
 E-mail: linak@linak-silkeborg.dk
 Web: www.linak.dk

Finland
 LINAK OY
 Phone: +358 10 841 8700
 E-mail: linak@linak.fi
 Web: www.linak.fi

France
 LINAK France E.U.R.L.
 Phone: +33 (0) 2 41 36 34 34
 Fax: +33 (0) 2 41 36 35 00
 E-mail: linak@linak.fr
 Web: www.linak.fr

Germany
 LINAK GmbH
 Phone: +49 6043 9655 0
 Fax: +49 6043 9655 60
 E-mail: info@linak.de
 Web: www.linak.de

India
 LINAK A/S India Liaison Office
 Phone: +91 120 4531797
 Fax: +91 120 4786428
 E-mail: info@linak.in
 Web: www.linak.in

Ireland
 LINAK UK Limited (Ireland)
 Phone: +44 (0)121 544 2211
 Fax: +44 (0)121 544 2552
 +44 (0)796 855 1606 (UK Mobile)
 +35 387 634 6554 (Rep.of Ireland Mobile)
 E-mail: sales@linak.co.uk
 Web: www.linak.co.uk

Italy
 LINAK ITALIA S.r.l.
 Phone: +39 02 48 46 33 66
 Fax: +39 02 48 46 82 52
 E-mail: info@linak.it
 Web: www.linak.it

Japan
 LINAK K.K.
 Phone: 81-45-533-0802
 Fax: 81-45-533-0803
 E-mail: linak@linak.jp
 Web: www.linak.jp

Malaysia
 LINAK Actuators Sdn. Bhd.
 Phone: +60 4 210 6500
 Fax: +60 4 226 8901
 E-mail: info@linak-asia.com
 Web: www.linak.my

Netherlands
 LINAK Actuator-Systems B.V.
 Phone: +31 76 5 42 44 40 /
 +31 76 200 11 10
 E-mail: info@linak.nl
 Web: www.linak.nl

New Zealand
 LINAK New Zealand Ltd
 Phone: +64 9580 2071
 Fax: +64 9580 2072
 E-mail: nzsales@linak.com.au
 Web: www.linak.com.au

Norway
 LINAK Norge AS
 Phone: +47 32 82 90 90
 E-mail: info@linak.no
 Web: www.linak.no

Poland
 LINAK Polska
 LINAK Danmark A/S (Spółka Akcyjna)
 Phone: +48 22 295 09 70 /
 +48 22 295 09 71
 E-mail: info@linak.pl
 Web: www.linak.pl

Republic of Korea
 LINAK Korea Ltd.
 Phone: +82 2 6231 1515
 Fax: +82 2 6231 1516
 E-mail: info@linak.kr
 Web: www.linak.kr

Slovakia
 LINAK Slovakia S.R.O.
 Phone: +421 51 7563 444
 Web: www.linak.sk

Spain
 LINAK Actuadores, S.L.u
 Phone: +34 93 588 27 77
 Fax: +34 93 588 27 85
 E-mail: esma@linak.es
 Web: www.linak.es

Sweden
 LINAK Scandinavia AB
 Phone: +46 8 732 20 00
 Fax: +46 8 732 20 50
 E-mail: info@linak.se
 Web: www.linak.se

Switzerland
 LINAK AG
 Phone: +41 43 388 31 88
 E-mail: info@linak.ch
 Web: www.linak.ch - www.fr.linak.ch
 www.it.linak.ch

Taiwan
 LINAK (Shenzhen) Actuator systems Ltd.
 Taiwan Representative office
 Phone: +886 2 272 90068
 Fax: +886 2 272 90096
 E-mail: sales@linak.com.tw
 Web: www.linak.com.tw

Turkey
 LINAK İth. İhr. San. ve Tic. A.Ş.
 Phone: +90 312 4726338
 Fax: +90 312 4726635
 E-mail: info@linak.com.tr
 Web: www.linak.com.tr

United Kingdom
 LINAK UK Limited
 Phone: +44 (0)121 544 2211
 Fax: +44 (0)121 544 2552
 E-mail: sales@linak.co.uk
 Web: www.linak.co.uk

DISTRIBUTORS

Argentina
 Novotec Argentina SRL
 Phone: 011-4303-8989 / 8900
 Fax: 011-4032-0184
 E-mail: info@novotecargentina.com
 Web: www.novotecargentina.com

Colombia
 MEM Ltda
 Phone: +[57] (1) 334-7666
 Fax: +[57] (1) 282-1684
 E-mail: servicioalcliente@memltda.com.co
 Web: www.mem.net.co

India
 Mechatronics Control Equipments India Pvt Ltd
 Phone: +91-44-28558484, 85
 E-mail: bala@mechatronicscontrol.com
 Web: www.mechatronicscontrol.com

Indonesia
 PT. Himalaya Everest Jaya
 Phone: +6 221 544 8956 /+6 221 544 8965
 Fax: +6 221 619 1925
 Fax (Sales): +6 221 619 4658
 E-mail: hejplastic-div@centrin.net.id
 Web: www.hej.co.id

Israel
 NetivTech LTD
 Phone: +972 55-2266-535
 Fax: +972 2-9900-560
 Email: info@NetivTech.com
 Web: www.netivtech.com

Singapore
 Servo Dynamics Pte Ltd
 Phone: +65 6844 0288
 Fax: +65 6844 0070
 E-mail: servodynamics@servo.com.sg

South Africa
 Industrial Specialised Applications CC
 Phone: +27 011 466 0346
 E-mail: gartht@isagroup.co.za
 Web: www.isaza.co.za

United Arab Emirates
 Mechatronics
 Phone: +971 4 267 4311
 Fax: +971 4 267 4312
 E-mail: mechtron@emirates.net.ae

Terms of use

LINAK® takes great care in providing accurate and up-to-date information on its products. However, the user is responsible for determining the suitability of LINAK products for a specific application. Due to continual development, LINAK products are subject to frequent modifications and changes. LINAK reserves the rights to conduct modifications, updates, and changes without any prior notice. For the same reason, LINAK cannot guarantee the correctness and actual status of imprinted information on its products.

LINAK uses its best efforts to fulfil orders. However, for the reasons mentioned above, LINAK cannot guarantee availability of any particular product at any given time. LINAK reserves the right to discontinue the sale of any product displayed on its website or listed in its catalogues or in other written material created and produced by LINAK, LINAK subsidiaries, or LINAK affiliates. All sales are subject to the 'Standard Terms of Sale and Delivery for LINAK A/S' available on LINAK websites. LINAK and the LINAK logotype are registered trademarks of LINAK A/S. All rights reserved.