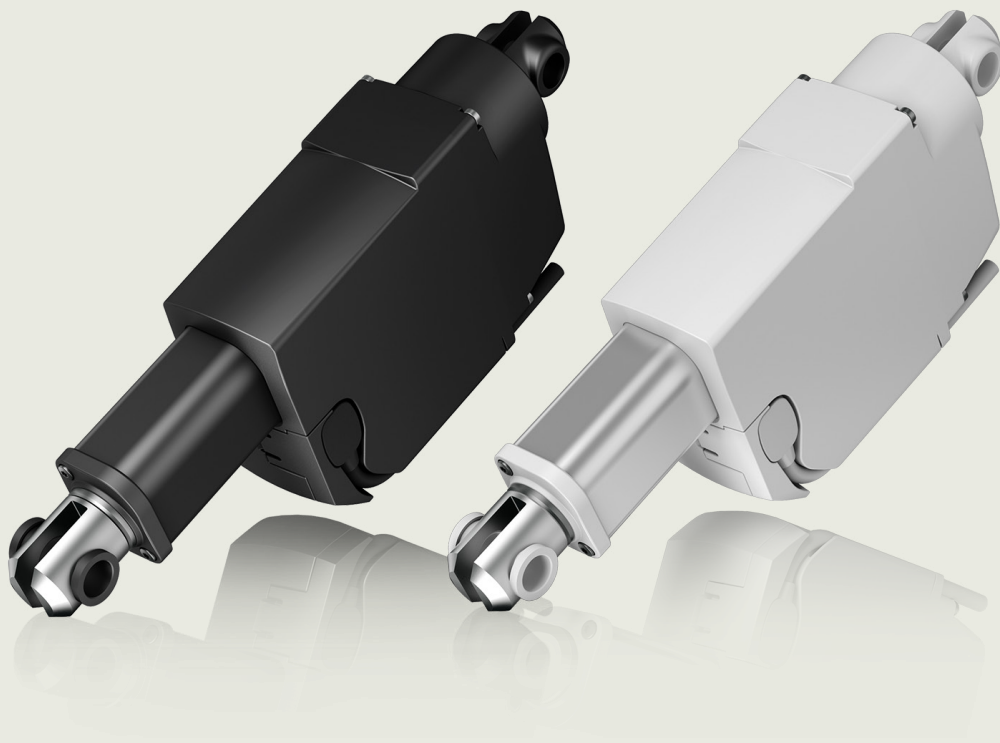


# Linear Actuator LA23

## Data Sheet



---

## Contents

<b>Introduction.....</b>	<b>3</b>
<b>Features and options .....</b>	<b>4</b>
<b>Usage .....</b>	<b>5</b>
<b>Ordering example .....</b>	<b>7</b>
<b>Positioning options.....</b>	<b>8</b>
<b>Dimensions .....</b>	<b>10</b>
<b>Built-in dimensions .....</b>	<b>11</b>
<b>Self-locking specifications .....</b>	<b>12</b>
<b>Technical specifications.....</b>	<b>13</b>
<b>Safety nut and back fixture overview.....</b>	<b>13</b>

## Introduction



The LA23 is a small and strong push/pull actuator (up to 2,500 N). The LA23 can be used in various applications where size is important.

Some of the benefits the LA23 offers you are:

- Compact design
- High lifting force
- Exchangeable cables
- IPX6 Washable DURA™

The standard LA23 is available for the CARELINE®, MEDLINE®, TECHLINE® product ranges.

## Features and options

Load in push:	2,500 N, 1,800 N, 1,500 N, 1,200 N, 900 N or 300 N
Load in pull:	2,500 N, 1,800 N, 1,500 N, 1,200 N, 900 N or 300 N
Dynamic push and pull:	Actuators are designed for push or pull applications. If a combination is required, please contact your local LINAK salesperson.
Housing colour:	Black (RAL 9005), outer tube steel or black Light grey (RAL 7035), outer tube steel
Protection class:	IPX4, IPX6, IPX6 Washable DURA™
Motor:	12 V DC, 24 V DC
Stroke length:	20 - 500 mm (for stroke 300-500 mm max. load is 1,000 N for pitch 3, 5, 6 and 9) Pitch 12 mm (for stroke 300-500 mm max. load is 900 N) Pitch 20 mm (for stroke 300-500 mm max. load is 300 N)
Built-in dimensions:	110 - 146 mm + stroke length
Positioning options:	Potential free end stop signals Hall potentiometer or Hall PWM position Single Hall, dual Hall digital, dual Hall encoded
Back fixture material:	Plastic or steel
Nut:	Guided
Safety nut:	In push or pull (2,500 N and 1,800 N version only safety nut in push)
Mechanical spline:	Yes
Built-in electrical end stop:	Yes
Exchangeable cable:	Yes
Static safety factor:	2.5
Noise level:	Max. 58.5 dB(A) (At nominal voltage and with no load, according to EN ISO 3743-1)
Mechanical end stop:	Yes
Integrated control:	Yes



## Usage

Duty cycle:	10%, 2 minutes continuous use followed by 18 minutes not in use
Operation temperature:	+5° - +40° normal operating temp. -30° - +50° according to test conditions: ISO 7176-9
Storage temperature:	-45 °C to +70 °C (according to ISO 7176-9)
Compatibility:	Compatible with LINAK control boxes. Please contact LINAK.
Relative humidity:	20% to 80% – non-condensing
Atmospheric pressure:	700 to 1060 hPa
Meters above sea level:	Max. 3000 meters
Flammability rating:	Enclosure UL94-V0
Approvals:	IEC60601-1 ANSI/AAMI ES60601-1 CAN/CSA-22.2 No 60601-1
Cycles:	The LA23 Life cycle test has been performed with a stabilised power supply (10% duty cycle) on a 200mm stroke actuator at max. load for the following number of cycles (at 20 °C ambient temperature): 3 mm pitch = 5000 cycles 5, 6, 9, 12 and 20 mm pitch = 10,000 cycles



LA23 is always equipped with mechanical end stop - to ensure first failure safety.

In the norm, EN 60601-1, it is mentioned that an application must be first failure safe. If the electrical end stop in the LA23 should fail, the built-in mechanical end stop ensures that the LA23 cannot run out of the spindle.

The mechanical end stop is only being used as a safety backup for the electrical end stop.

If electrical end stop fails to function, the actuator will continue to retract or extend until mechanical end stop is reached.

The customer application must be able to obtain or withstand an actuator with failing electrical end stop.

**For actuators with stroke length (SL) < 50 mm:**

Typical minimum length of actuator reaching mechanical end stop: BID - 2 mm.

Typical maximum length of actuator reaching mechanical end stop: BID + SL + 52 mm.

**For actuators with stroke length (SL) ≥ 50 mm:**

Typical minimum length of actuator reaching mechanical end stop: BID - 2 mm.

Typical maximum length of actuator reaching mechanical end stop: BID + SL + 4 mm.



## Ordering example

23	0	1	0	0	1	0	0	0	2	5	0	B	4		
														HOUSING/IP DEGREE:	4=IPX4 6=IPX6 W=IPX6 Washable DURA
														MOTOR TYPE:	A = 12 V B = 24 V (driving with CB on battery) G = 24 V (33 V, LINAK CB with SMPS)
														STROKE:	XXX = mm      Min. 020 mm      In steps of 5 mm Max. 300 mm  (For minimum BID see table 2)
														POSITIONING:	XX = See table 1
														SAFETY OPTION:	0 = No safety option 1 = Safety nut for push 2 = Safety nut for pull 3 = Spline without safety nut 4 = Spline + safety nut push
														HOUSING COLOUR:	1 = Black (RAL 9005) + grey outer tube 2 = Light grey (RAL7035) + grey outer tube 3 = Black (RAL 9005) + black outer tube
														PISTON ROD EYE:	0 = Standard steel with slot (6.1 mm), eye Ø10.1 mm, incl. plastic bushings 1 = Standard steel with slot (6.1 mm), eye Ø10.1 mm 2 = Standard steel with slot (6.1 mm), eye Ø12.3 mm
														BACK FIXTURE ROTATION:	0 = 0° clockwise      1 = 90° clockwise A = 7.5° clockwise      M = 97.5° clockwise B = 15° clockwise      N = 105° clockwise C = 22.5° clockwise      P = 112.5° clockwise D = 30° clockwise      Q = 120° clockwise E = 37.5° clockwise      R = 127.5° clockwise F = 45° clockwise      S = 135° clockwise G = 52.5° clockwise      T = 142.5° clockwise H = 60° clockwise      U = 150° clockwise J = 67.5° clockwise      V = 157.5° clockwise K = 75° clockwise      W = 165° clockwise L = 82.5° clockwise      Z = 172.5° clockwise
														BACK FIXTURE:	1 = Plastic with slot (6.1 mm), eye Ø10.1, (only for standard push load) 2 = Steel with slot (6.1 mm), eye Ø10.1 mm, incl. plastic bushings 3 = Steel with slot (6.1mm), eye Ø10.1 mm 4 = Steel with slot (6.1mm), eye Ø12.3 mm
														SPINDLE TYPE:	0 = 12 mm pitch (900 N) 2 = 20 mm pitch (300 N) 3 = 3 mm pitch (2500 N) 5 = 5 mm pitch (1800 N) 6 = 6 mm pitch (1500 N) 9 = 9 mm pitch (1200 N)
														ACTUATOR TYPE:	23 = LA23

### Note:

- Cables must be ordered separately (for specifications and item numbers see later pages)
- Cable locks must be ordered separately for LA23 (for item numbers, see later pages)
- When the built-in dimensions (BID) are special, write xxx when ordering, write stroke + BID in system specification.
- Noise can occur if plastic bushings are not fitted in the piston rod eye/back fixture



## Positioning options

Table1

Different positioning options can be chosen for LA23.

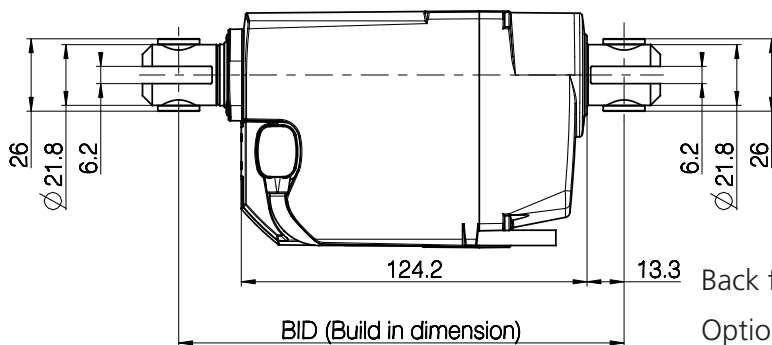
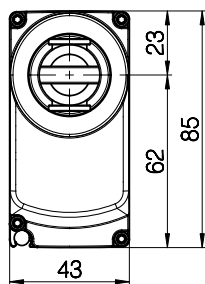
Positioning/ Ordering code number		Description of positioning option		No. of pins in LA23
X	X			
0	0	Standard electrical endstop - no positioning		6
0	1	Standard electrical endstop and potential free endstop - no positioning		6
0	2	Dual Hall digital positioning		6
0	3	Dual Hall PNP positioning		6
0	4	Dual Hall, encoded		6
1	1	Hall Potentiometer feedback	0-10V	10
1	2	Hall Potentiometer feedback	1-9V	10
1	3	Hall Potentiometer feedback	2-8V	10
1	4	Hall Potentiometer feedback	0-5V	10
1	5	Hall Potentiometer feedback	0.5-4.5V	10
1	6	Hall Potentiometer feedback	0-3.3V	10
1	7	Hall Potentiometer feedback	0.3-3V	10
2	1	Hall Potentiometer feedback and potential free endstop	0-10V	10
2	2	Hall Potentiometer feedback and potential free endstop	1-9V	10
2	3	Hall Potentiometer feedback and potential free endstop	2-8V	10
2	4	Hall Potentiometer feedback and potential free endstop	0-5V	10
2	5	Hall Potentiometer feedback and potential free endstop	0.5-4.5V	10
2	6	Hall Potentiometer feedback and potential free endstop	0-3.3V	10
2	7	Hall Potentiometer feedback and potential free endstop	0.3-3V	10
3	1	Hall PWM position feedback	0-100%	10
3	2	Hall PWM position feedback	10-90%	10
3	3	Hall PWM position feedback	20-80%	10
4	1	Hall PWM position feedback and with potential free endstop	0-100%	10
4	2	Hall PWM position feedback and with potential free endstop	10-90%	10
4	3	Hall PWM position feedback and with potential free endstop	20-80%	10



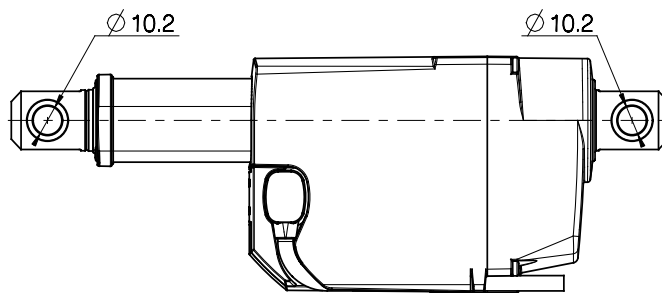
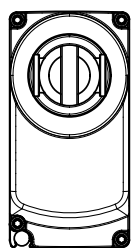
Positioning/ Ordering code number X X		Description of positioning option IC (Integrated Control)		No. of pins in LA23
5	0	Standard electrical endstop - no positioning		10
5	2	Standard single Hall positioning		10
6	1	Hall potentiometer feedback	0 - 10V	10
6	2	Hall potentiometer feedback	1 - 9V	10
6	3	Hall potentiometer feedback	2 - 8V	10
6	4	Hall potentiometer feedback	0 - 5V	10
6	5	Hall potentiometer feedback	0.5 - 4.5V	10
6	6	Hall potentiometer feedback	0 - 3.3V	10
6	7	Hall potentiometer feedback	0.3 - 3V	10
7	1	Hall PWM position feedback	0-100%	10
7	2	Hall PWM position feedback	10-90%	10
7	3	Hall PWM position feedback	20-80%	10



## Dimensions



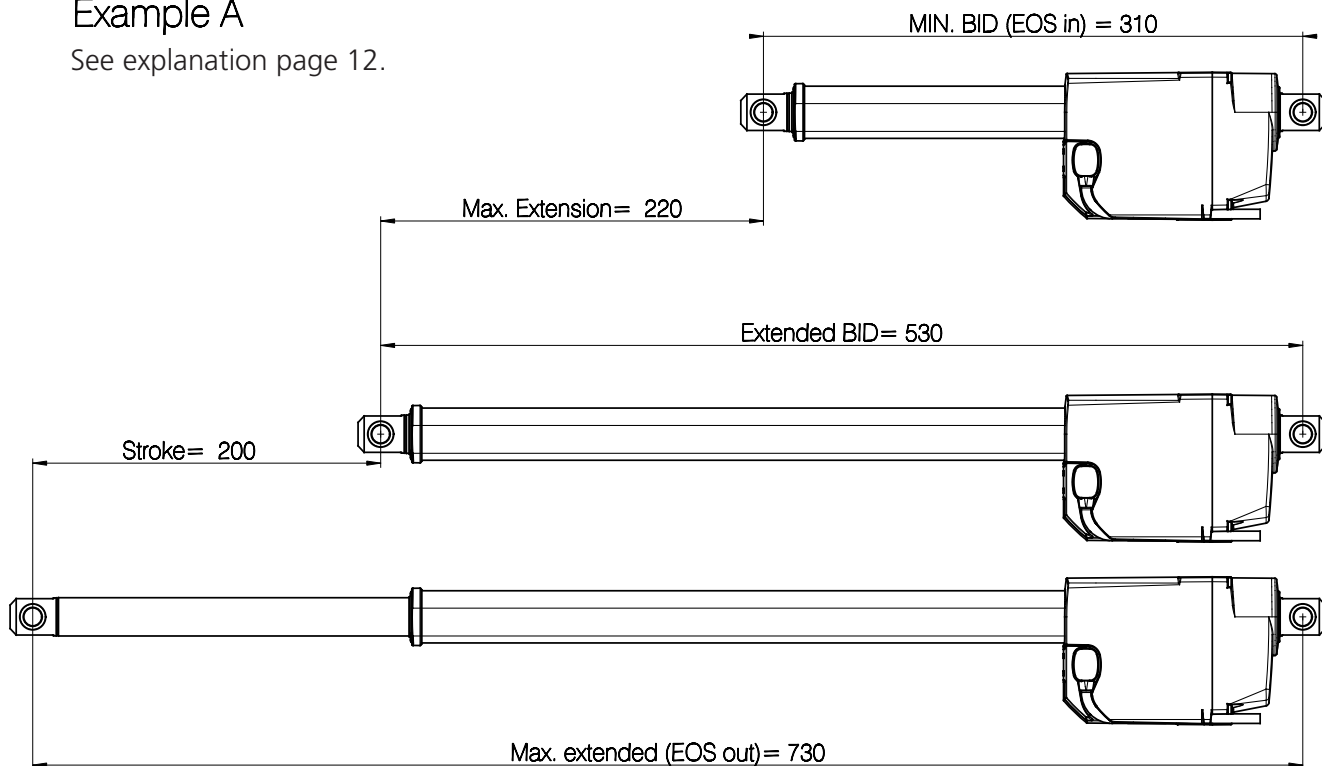
Back fixture orientation  
Option 1



Back fixture orientation  
Option 0

### Example A

See explanation page 12.



Drawing no.: 0234024

### Tolerances

For built-in dimensions and stroke  $\pm 2$  mm.



## Built-in dimensions

Table 2

The built-in dimension depends upon the chosen safety option and stroke length.

Please see the table below to decide upon the built-in dimension.

Safety option	Stroke length	Spindle pitch	Min. built-in Dimensions
0 = No safety option	20 - 49	6, 9, 12 or 20	160
0 = No safety option	20 - 49	3, 5	168
1 = Safety nut for push	20 - 49	6, 9 or 12	160
1 = Safety nut for push	20 - 49	3, 5	168
2 = safety nut for pull	20 - 49	6, 9 or 12	172
3 = Mechanical Spline for push	20 - 49	6, 9 or 12	180
3 = Mechanical Spline for push	20 - 49	3, 5	196
4 = Mechanical Spline & safety nut for push	20 - 49	6, 9 or 12	180
4 = Mechanical Spline & safety nut for push	20 - 49	3, 5	196
0 = No safety option	50 - 200	6, 9, 12 or 20	110 + stroke
0 = No safety option	50 - 200	3, 5	118 + stroke
1 = Safety nut for push	50 - 200	6, 9 or 12	110 + stroke
1 = Safety nut for push	50 - 200	3, 5	118 + stroke
2 = Safety nut for pull	50 - 200	6, 9 or 12	122 + stroke
3 = Mechanical Spline for push	50 - 200	6, 9 or 12	130 + stroke
3 = Mechanical Spline for push	50 - 200	3, 5	146 + stroke
4 = Mechanical Spline & safety nut for push	50 - 200	6, 9 or 12	130 + stroke
4 = Mechanical Spline & safety nut for push	50 - 200	3, 5	146 + stroke
0 = No safety option	201 - 500	6, 9, 12 or 20	130 + stroke
0 = No safety option	201 - 500	3, 5	138 + stroke
1 = Safety nut for push	201 - 500	6, 9 or 12	130 + stroke
1 = Safety nut for push	201 - 500	3, 5	138 + stroke
2 = Safety nut for pull	201 - 500	6, 9 or 12	142 + stroke
3 = Mechanical Spline for push	201 - 500	6, 9 or 12	150 + stroke
3 = Mechanical Spline for push	201 - 500	3, 5	166 + stroke
4 = Mechanical Spline & safety nut for push	201 - 500	6, 9 or 12	150 + stroke
4 = Mechanical Spline & safety nut for push	201 - 500	3, 5	166 + stroke



**It is possible to order LA23 with extended built-in dimensions if the following requirements are fulfilled (see example "A" earlier page):**

	Spindle pitch = 6, 9, 12, 20	Spindle pitch = 3, 5	Spindle pitch = 6, 9,12	Spindle pitch = 6, 9, 12	Spindle pitch = 3, 5
	Safety option 0: No safety option		Safety option 2: Safety nut pull	Safety option 3: Spline without safety nut	
	Safety option 1: safety nut push			Safety option 4: Spline + safety nut push	
Max.built-in dimensions	≤730 - stroke	≤738 - stroke	≤742 - stroke	≤750 - stroke	≤766 - stroke

**Example:**

- A) 6 mm pitch no safety option, stroke 200, BID can be max.  $(730 - 200) = 530$   
(see earlier page for further explanation)
- B) 3 mm pitch no safety option, stroke 20, BID can be max.  $(738 - 20) = 718$

## Self-locking specifications

Spindle Pitch	Without short circuit	With short circuit
20 mm pitch	100	300
12 mm pitch	750	900
9 mm pitch	750	1,200
6 mm pitch	1,200	1,500
5 mm pitch	1,600	1,800
3 mm pitch	2,500	2,500



## Technical specifications

Power supply	Spindle pitch (mm)	Load max.** Push/Pull (N)	Motor type	*Typical speed at 0/full load (mm/sec.)	*Typical current at 0/ full load (Amp.)	Inrush current (Amp.)
12VDC	3	2,500/2,500	A: 12V	3.1 / 2.5	0.8 / 3.6	13.4
CBJ1/2, CBJH and CBJC	3	2,500/2,500	B: 24V	3.2 / 2.6	0.4 / 1.9	8.7
OpenBus™	3	2,500/2,500	G: 24V	3.3 / 2.7	0.3 / 1.4	6.2
12VDC	5	1,800/1,800	A:12V	5.4 / 4.2	0.8 / 3.9	13.4
CBJ1/2, CBJH and CBJC	5	1,800/1,800	B:24V	5.4 / 4.5	0.4 / 1.9	8.7
OpenBus™	5	1,800/1,800	G:24V	5.6 / 4.6	0.3 / 1.4	6.2
12VDC	6	1,500/1,500	A: 12V	6.6 / 5.2	0.8 / 3.6	13.4
CBJ1/2, CBJH and CBJC	6	1,500/1,500	B: 24V	6.4 / 5.5	0.4 / 1.7	8.7
OpenBus™	6	1,500/1,500	G: 24V	6.7 / 5.5	0.3 / 1.3	6.2
12VDC	9	1,200/1,200	A: 12V	9.9 / 7.5	0.9 / 4.0	13.4
CBJ1/2, CBJH and CBJC	9	1,200/1,200	B: 24V	9.5 / 8.1	0.4 / 1.9	8.7
OpenBus™	9	1,200/ 1,200	G: 24V	9.9 / 8.1	0.3 / 1.3	6.2
12VDC	12	900/900	A:12V	13 / 9.6	0.9 / 3.8	13.4
CBJ1/2, CBJH and CBJC	12	900/900	B:24V	12.6 / 10.4	0.4 / 1.9	8.7
OpenBus™	12	900/900	G:24V	13.3 / 10.7	0.3 / 1.4	6.2
12VDC	20	300/300	A:12V	21.5 / 18.6	0.8 / 4.3	–
CBJ1/2, CBJH and CBJC	20	300/300	B:24V	21.6 / 20.2	0.4 / 2.3	–
OpenBus™	20	300/300	G:24V	21.8 / 20.6	0.3 / 1.6	–

\* Typical values, measurements are made with an actuator in connection with a stable power supply. The typical values can have a variation of  $\pm 20\%$  on the current values and  $\pm 10\%$  on the speed values.

\*\* If the stroke is between 300-500 mm, the max. load is 1,000 N for pitch 3, 5, 6 and 9.

## Safety nut and back fixture overview

Pitch (mm)	Load (N)	Safety nut	Steel back fixture	Plastic back fixture
20	300	Not an option	Required in pull	Only in push
12	900	Optional in push or pull	Required in pull	Only in push
9	1,200	Optional in push or pull	Required in pull	Only in push
6	1,500	Optional in push or pull	Required in pull	Only in push
5	1,800	Optional in push (Safety nut 1,800 N not available in pull)	Always required	Not available
3	2,500	Optional in push (Safety nut 2,500 N not available in pull)	Always required	Not available



# Contacts

## FACTORIES

Denmark - Headquarters  
LINAK A/S  
Phone: +45 73 15 15 15  
Fax: +45 74 45 80 48  
Fax (Sales): +45 73 15 16 13  
Web: www.linak.com

China  
LINAK (Shenzhen) Actuator Systems, Ltd.  
Phone: +86 755 8610 6656  
Phone: +86 755 8610 6990  
Web: www.linak.cn

Slovakia  
LINAK Slovakia s.r.o.  
Phone: +421 51 7563 444  
Web: www.linak.sk

Thailand  
LINAK APAC Ltd.  
Phone: +66 33 265 400  
Web: www.linak.com

USA  
LINAK U.S. Inc.  
Americas Headquarters  
Phone: +1 502 253 5595  
Fax: +1 502 253 5596  
Web: www.linak-us.com  
www.linak-latinamerica.com

## SUBSIDIARIES

Australia  
LINAK Australia Pty. Ltd  
Phone: +61 3 8796 9777  
Fax: +61 3 8796 9778  
E-mail: sales@linak.com.au  
Web: www.linak.com.au

Austria  
LINAK Zweigniederlassung - Österreich (Wien)  
Phone: +43 (1) 890 7446  
Fax: +43 (1) 890 744615  
E-mail: info@linak.de  
Web: www.linak.at - www.linak.hu

Belgium  
LINAK Actuator-Systems NV/SA (Belgium & Luxembourg)  
Phone: +32 (0)9 230 01 09  
E-mail: beinfo@linak.be  
Web: www.linak.be - www.fr.linak.be

Brazil  
LINAK Do Brasil Comércio De Atuadores Ltda.  
Phone: +55 (11) 2832 7070  
Fax: +55 (11) 2832 7060  
E-mail: info@linak.com.br  
Web: www.linak.com.br

Canada  
LINAK Canada Inc.  
Phone: +1 502 253 5595  
Fax: +1 416 255 7720  
E-mail: info@linak.ca  
Web: www.linak-us.com

Czech Republic  
LINAK C&S s.r.o.  
Phone: +42 058 174 1814  
Fax: +42 058 170 2452  
E-mail: info@linak.cz  
Web: www.linak.cz - www.linak.sk

Denmark - International  
LINAK International  
Phone: +45 73 15 15 15  
E-mail: info@linak.com  
Web: www.linak.com

Denmark - Sales  
LINAK Danmark A/S  
Phone: +45 86 80 36 11  
Fax: +45 86 82 90 51  
E-mail: linak@linak-silkeborg.dk  
Web: www.linak.dk

Finland  
LINAK OY  
Phone: +358 10 841 8700  
E-mail: linak@linak.fi  
Web: www.linak.fi

France  
LINAK France E.U.R.L  
Phone: +33 (0) 2 41 36 34 34  
Fax: +33 (0) 2 41 36 35 00  
E-mail: linak@linak.fr  
Web: www.linak.fr

Germany  
LINAK GmbH  
Phone: +49 6043 9655 0  
Fax: +49 6043 9655 60  
E-mail: info@linak.de  
Web: www.linak.de

India  
LINAK A/S India Liaison Office  
Phone: +91 120 4531797  
Fax: +91 120 4786428  
E-mail: info@linak.in  
Web: www.linak.in

Ireland  
LINAK UK Limited (Ireland)  
Phone: +44 (0)121 544 2211  
Fax: +44 (0)121 544 2552  
+44 (0)796 855 1606 (UK Mobile)  
+35 387 634 6554 (Rep.of Ireland Mobile)  
E-mail: sales@linak.co.uk  
Web: www.linak.co.uk

Italy  
LINAK ITALIA S.r.l.  
Phone: +39 02 48 46 33 66  
Fax: +39 02 48 46 82 52  
E-mail: info@linak.it  
Web: www.linak.it

Japan  
LINAK K.K.  
Phone: 81-45-533-0802  
Fax: 81-45-533-0803  
E-mail: linak@linak.jp  
Web: www.linak.jp

Malaysia  
LINAK Actuators Sdn. Bhd.  
Phone: +60 4 210 6500  
Fax: +60 4 226 8901  
E-mail: info@linak-asia.com  
Web: www.linak.my

Netherlands  
LINAK Actuator-Systems B.V.  
Phone: +31 76 5 42 44 40 / +31 76 200 11 10  
E-mail: info@linak.nl  
Web: www.linak.nl

New Zealand  
LINAK New Zealand Ltd  
Phone: +64 9580 2071  
Fax: +64 9580 2072  
E-mail: nzsales@linak.com.au  
Web: www.linak.com.au

Norway  
LINAK Norge AS  
Phone: +47 32 82 90 90  
E-mail: info@linak.no  
Web: www.linak.no

Poland  
LINAK Polska  
LINAK Danmark A/S (Spółka Akcyjna)  
Phone: +48 22 295 09 70 / +48 22 295 09 71  
E-mail: info@linak.pl  
Web: www.linak.pl

Republic of Korea  
LINAK Korea Ltd.  
Phone: +82 2 6231 1515  
Fax: +82 2 6231 1516  
E-mail: info@linak.kr  
Web: www.linak.kr

Slovakia  
LINAK Slovakia S.R.O.  
Phone: +421 51 7563 444  
Web: www.linak.sk

Spain  
LINAK Actuadores, S.L.U  
Phone: +34 93 588 27 77  
Fax: +34 93 588 27 85  
E-mail: esma@linak.es  
Web: www.linak.es

Sweden  
LINAK Scandinavia AB  
Phone: +46 8 732 20 00  
Fax: +46 8 732 20 50  
E-mail: info@linak.se  
Web: www.linak.se

Switzerland  
LINAK AG  
Phone: +41 43 388 31 88  
E-mail: info@linak.ch  
Web: www.linak.ch - www.fr.linak.ch  
www.it.linak.ch

Taiwan  
LINAK (Shenzhen) Actuator systems Ltd.  
Taiwan Representative office  
Phone: +886 2 272 90068  
Fax: +886 2 272 90096  
E-mail: sales@linak.com.tw  
Web: www.linak.com.tw

Turkey  
LINAK İth. İhr. San. ve Tic. A.Ş.  
Phone: +90 312 4726338  
Fax: +90 312 4726635  
E-mail: info@linak.com.tr  
Web: www.linak.com.tr

United Kingdom  
LINAK UK Limited  
Phone: +44 (0)121 544 2211  
Fax: +44 (0)121 544 2552  
E-mail: sales@linak.co.uk  
Web: www.linak.co.uk

## DISTRIBUTORS

Argentina  
Novotec Argentina SRL  
Phone: 011-4303-8989 / 8900  
Fax: 011-4032-0184  
E-mail: info@novotecargentina.com  
Web: www.novotecargentina.com

Colombia  
MEM Ltda  
Phone: +[57] (1) 334-7666  
Fax: +[57] (1) 282-1684  
E-mail: servicioalcliente@memltda.com.co  
Web: www.mem.net.co

India  
Mechatronics Control Equipments India Pvt Ltd  
Phone: +91-44-28558484, 85  
E-mail: bala@mechatronicscontrol.com  
Web: www.mechatronicscontrol.com

Indonesia  
PT. Himalaya Everest Jaya  
Phone: +6 221 544 8956 /+6 221 544 8965  
Fax: +6 221 619 1925  
Fax (Sales): +6 221 619 4658  
E-mail: hejplastic-div@centrin.net.id  
Web: www.hej.co.id

Israel  
NetivTech LTD  
Phone: +972 55-2266-535  
Fax: +972 2-9900-560  
E-mail: info@NetivTech.com  
Web: www.netivtech.com

Singapore  
Servo Dynamics Pte Ltd  
Phone: +65 6844 0288  
Fax: +65 6844 0070  
E-mail: servodynamics@servo.com.sg

South Africa  
Industrial Specialised Applications CC  
Phone: +27 011 466 0346  
E-mail: gartht@isagroup.co.za  
Web: www.isaza.co.za

United Arab Emirates  
Mechatronics  
Phone: +971 4 267 4311  
Fax: +971 4 267 4312  
E-mail: mechtron@emirates.net.ae

## Terms of Use

LINAK® takes great care to provide accurate and up-to-date information about its products. However, it is the responsibility of the user to determine the suitability of LINAK products for any specific application. Due to ongoing product development, LINAK products are subject to continuous modifications and changes. LINAK reserves the right to make such modifications, updates, and changes without prior notice. For this reason, LINAK cannot guarantee the accuracy or current status of printed information about its products.

LINAK makes every effort to fulfil orders. However, due to the factors described above, LINAK cannot guarantee the availability of any particular product at any given time. LINAK also reserves the right to discontinue the sale of any product displayed on its website, in catalogues, or in other written materials issued by LINAK or its affiliated companies. All sales are subject to the applicable terms and conditions of sale and delivery available on LINAK websites. LINAK and the LINAK logotype are registered trademarks of LINAK A/S. All rights reserved.