

# Service Data Tool 2 for OpenBus™ Control Boxes and Batteries

## Data Sheet



## Contents

<b>Introduction</b> .....	<b>3</b>
<b>Features and options</b> .....	<b>3</b>
<b>Usage</b> .....	<b>3</b>
<b>OneConnect</b> .....	<b>4</b>
<b>SDT2 for CO control boxes</b> .....	<b>5</b>
System overview for CO control boxes .....	5
<b>SDT2 for CO-Link systems</b> .....	<b>6</b>
System overview for CO-Link systems .....	6
<b>SDT2 for LIFT50 systems</b> .....	<b>7</b>
System overview for LIFT50.....	7
<b>SDT2 for JUMBO Care systems</b> .....	<b>8</b>
System overview for JUMBO Care .....	8
<b>Contacts</b> .....	<b>10</b>

## Introduction

Service Data Tool ensures efficient maintenance of healthcare applications and enables easy read-out of service data from OpenBus™ control boxes and batteries.

User-friendly graphics give easy understanding of data and shift between sections.

Efficient maintenance procedures are ensured by easy access to

- Knowledge about wear and tear
- Fault-finding tool
- Easy service visit reports
- Service data

## Features and options

- Read out service data on PC via Service data tool
- Information about wear and tear helps ensure the application functionality at all times
- Actuator life time information is read out of the COXX control box.
- Intelligent work counter sums up the work done by the actuators and considers how much the actuators have been loaded
- Overload information about why the application has stopped reduces number of service visits
- Easy service visit reports for documentation of service visit
- Keep updated service data also when replacing the control box or an actuator
- Trouble shooting section with error indication and log file to send for further technical support
- Help icon for easy data explanation
- Information icon e.g. for adding checklist for Service Technician to follow
- For mobile applications or applications with battery backup the battery section indicates battery life and actual charging state
- Read out service data of up to 6 actuators with PJ2 Junction box connected.
- Read out service data of up to 12 actuators with CO-Link system connecting a primary and secondary COXX, 2 x PJ2 Junction box and batteries

## Usage

- Compatible with OpenBus control boxes, CB6 MK2, BA16, BA19, BA2, CBJC, BAL50 and more
- Compatible with Windows 10 and 11



## OneConnect



For a simple, wireless alternative to Service Data Tool that can be used with Android and iOS devices, please see OneConnect by LINAK.

OneConnect is a powerful app designed to better connect you to your end users and improve troubleshooting like never before.

- View system status on the fly
- Access system data via Bluetooth®
- Remotely access system data from anywhere in the world
- Customise your help content
- Brand to your company's aesthetics

To learn more about these features and how to get started with OneConnect for your products, visit the [OneConnect landing page](https://linak.com/OneConnect) (LINAK.com/OneConnect) and contact us today.

Compatible LINAK Bluetooth control boxes are: COL50, CO71, CO61 (select versions), CA63, CAL40+, and CO53 (select versions).

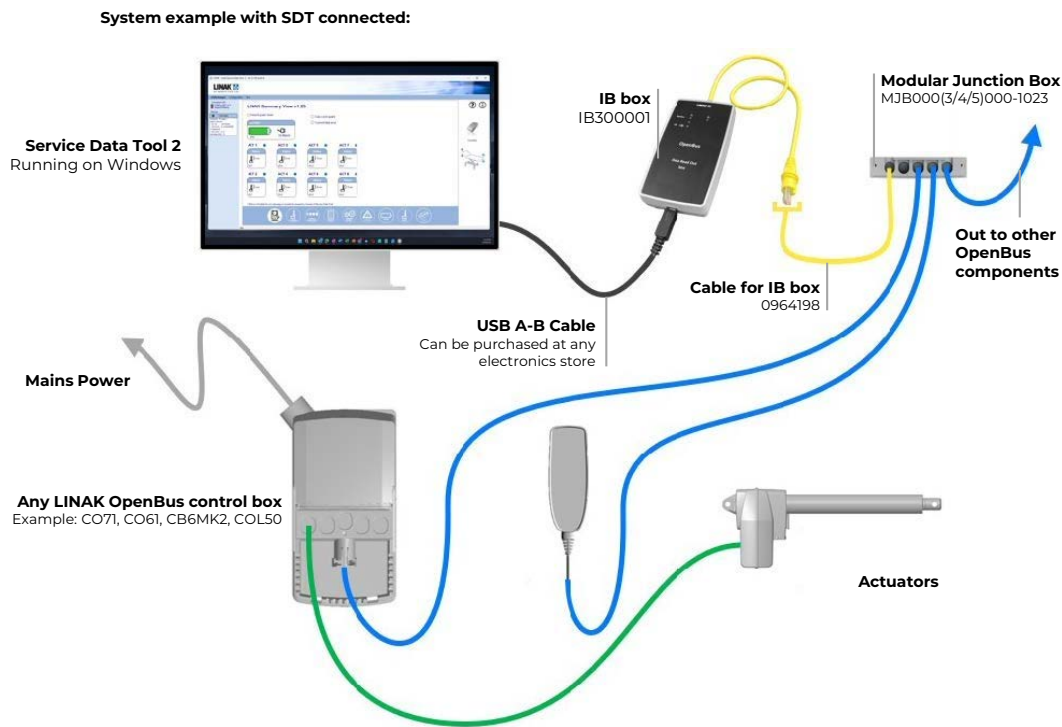


## SDT2 for CO control boxes

### System overview for CO control boxes

The LINAK IB3 tool (the SDT “box”) allows for service data read-out from most LINAK systems with a modular (also called RJ50) connection. Below is a diagram of how this IB3 tool is often connected to a standard LINAK system via a Modular Junction Box (MJB).

While it is also possible to connect the yellow connector directly to the CO control box, it is advisable to do so through an MJB so other components can still be connected and ready to send commands, both to wake up the system for the SDT2 program, but also to run the system for troubleshooting purposes.



### Information

Please remember to order cables, the modular junction box and the IB300001 box for data read-out from COXX to PC.

Article number	Product
IB300001	Box for data read out from COXX primary or COXX secondary to PC
MJB000 (3/4/5) 000-1023	Modular Junction box for connection of Service Data Tool and foot switch, hand control or other OpenBus™ accessories
0964198	Cable for usage of Service Data Tool (from MJB to IB300001 box)
0964461-xxxx-A	Cable for connection of MJB to COXX: Straight, RAL 7035, Modular Jack, RAL7035, Modular jack, length xxx mm
SML912497-A	Splitter mains cable for COXX primary and COXX secondary

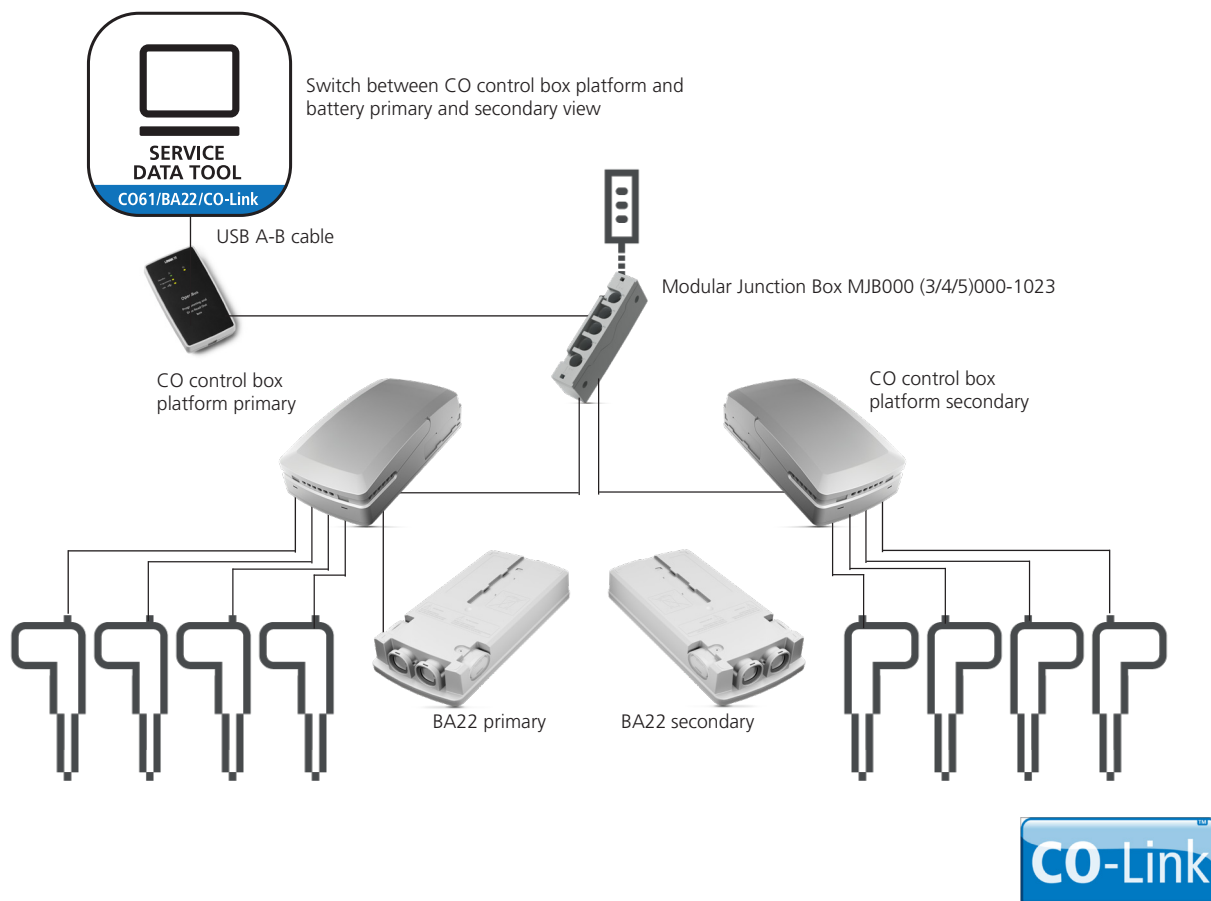


## SDT2 for CO-Link systems

### System overview for CO-Link systems

The LINAK IB3 tool (the SDT “box”) also allows for service data read-out from LINAK CO-Link systems with a modular (also called RJ50) connection. Below is a diagram of how this IB3 tool is connected to a LINAK CO-Link system via a Modular Junction Box (MJB). For CO-Link, it is not possible to connect the yellow connector directly to the CO control box.

An MJB is required to maintain the CO-Link communication, and an MJB is recommended so other components can still be connected and ready to send commands, both to wake up the system for the SDT2 program, but also to run the system for troubleshooting purposes.

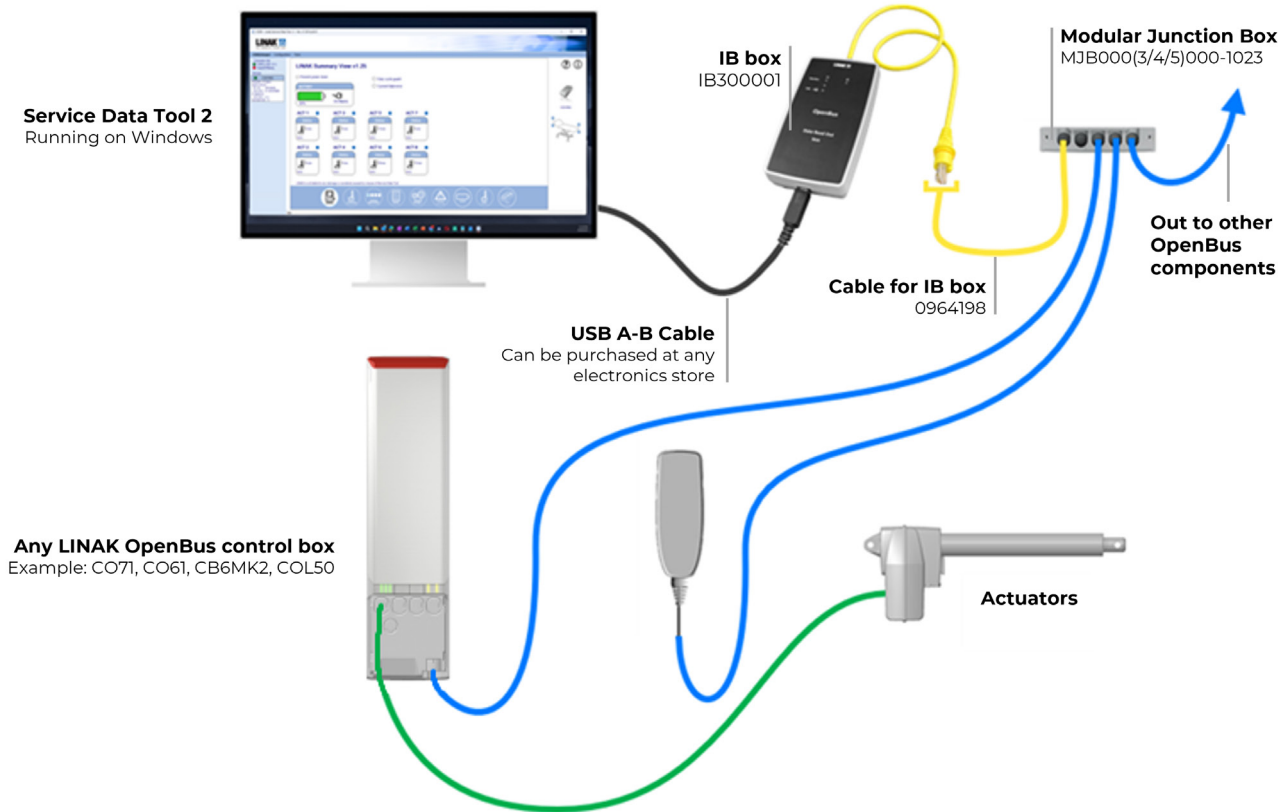


## SDT2 for LIFT50 systems

### System overview for LIFT50

The LINAK IB3 tool (the SDT “box”) can also be used for service data read-out from the LIFT50 control box with a modular (also called RJ50) connection. Below is a diagram of how this IB3 tool is connected to a standard LIFT50 system via a Modular Junction Box (MJB).

While it is also possible to connect the yellow connector directly to the CO control box, it is advisable to do so through an MJB so other components can still be connected and ready to send commands, both to wake up the system for the SDT2 program, but also to run the system for troubleshooting purposes.



### Information

Please note that the following view is now called “LIFT” instead of “COL50” in SDT ver. 3 and above and is an included view (does not need to be imported first).



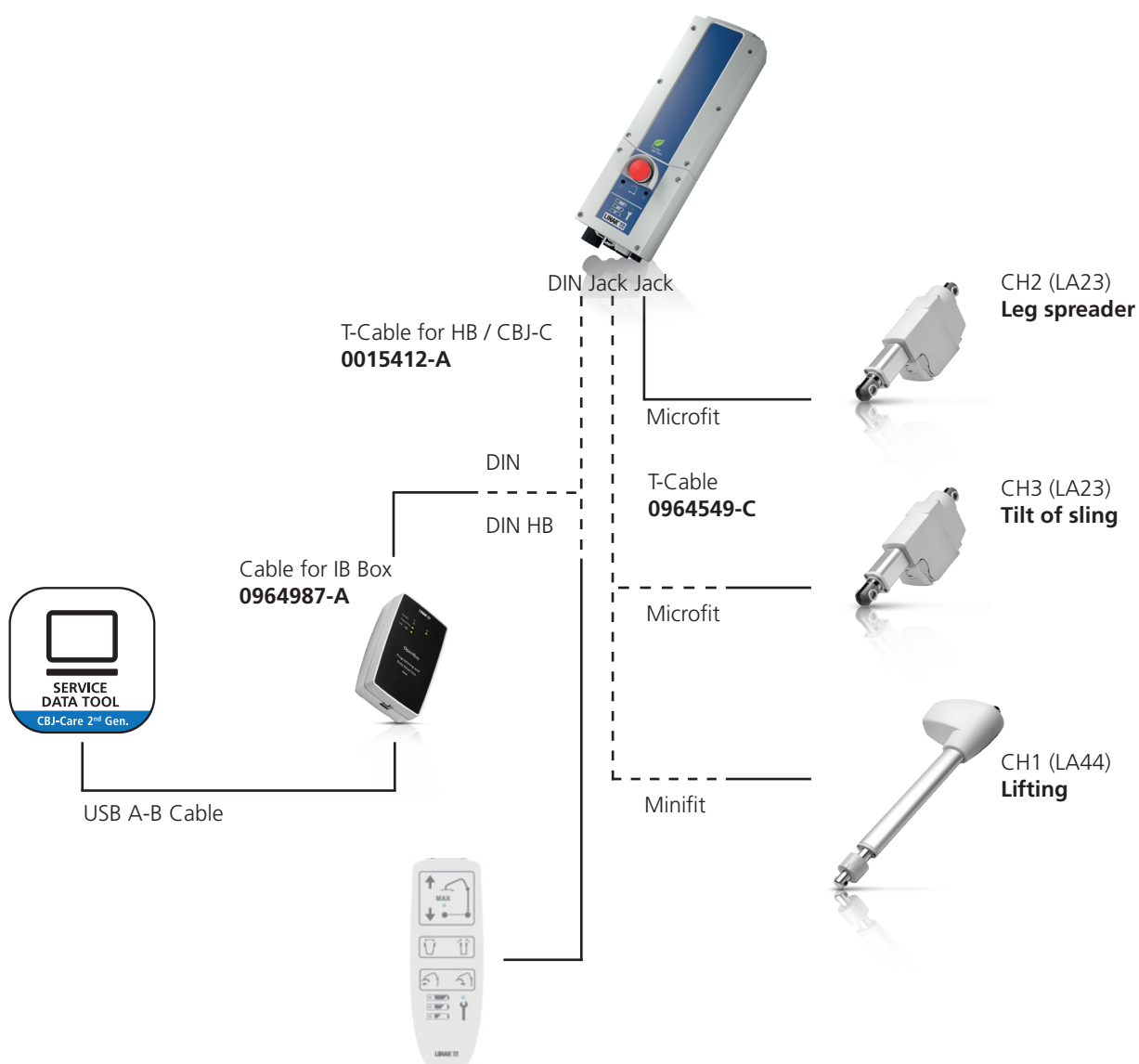
## SDT2 for JUMBO Care systems

### System overview for JUMBO Care

The LINAK IB3 tool (the SDT "box") can also be used for service data read-out from the JUMBO Care control box with a DIN connection. Below is a diagram of how this IB3 tool is connected to a standard LIFT50 system via a Modular Junction Box (MJB).

While it is also possible to connect the DIN connector directly to the CO control box, it is advisable to do so using the T-cable (0015412-A) so that other components can still be connected and ready to send commands, both to wake up the system for the SDT2 program, but also to run the system for troubleshooting purposes.

Service Data Tool and JUMBO Care 2nd generation, 3 channel solution:





## Information

Please note that the Service Data Tool version 2.5.0 or newer is needed. The JUMBO Care article number should begin with CBJxxxxxxxxxxxx.

Please remember to order cables and the IB300001 box for data read-out from JUMBO Care to laptop.

The T-Cable 0015412-A is needed if you do not have an activation button on the JUMBO Care control box.

Article number	Product
<b>IB300001</b>	Box for data read out from JUMBO Care to laptop
<b>0964987-A</b>	Cable for usage of Service Data Tool (from JUMBO Care to IB300001 box)
<b>0015412-A</b>	T-Cable for usage of hand control and Service Data Tool. (from JUMBO Care to hand control and IB300001 box)
<b>0964549-C</b>	T-Cable, Stereo Jack for CH1 to enable 3 channel solution



# Contacts

## FACTORIES

Denmark - Headquarters  
LINAK A/S  
Phone: +45 73 15 15 15  
Fax: +45 74 45 80 48  
Fax (Sales): +45 73 15 16 13  
Web: www.linak.com

China  
LINAK (Shenzhen) Actuator Systems, Ltd.  
Phone: +86 755 8610 6656  
Phone: +86 755 8610 6990  
Web: www.linak.cn

Slovakia  
LINAK Slovakia s.r.o.  
Phone: +421 51 7563 444  
Web: www.linak.sk

Thailand  
LINAK APAC Ltd.  
Phone: +66 33 265 400  
Web: www.linak.com

USA  
LINAK U.S. Inc.  
Americas Headquarters  
Phone: +1 502 253 5595  
Fax: +1 502 253 5596  
Web: www.linak-us.com  
www.linak-latinamerica.com

## SUBSIDIARIES

Australia  
LINAK Australia Pty. Ltd  
Phone: +61 3 8796 9777  
Fax: +61 3 8796 9778  
E-mail: sales@linak.com.au  
Web: www.linak.com.au

Austria  
LINAK Zweigniederlassung - Österreich (Wien)  
Phone: +43 (1) 890 7446  
Fax: +43 (1) 890 744615  
E-mail: info@linak.de  
Web: www.linak.at - www.linak.hu

Belgium  
LINAK Actuator-Systems NV/SA  
(Belgium & Luxembourg)  
Phone: +32 (0)9 230 01 09  
E-mail: beinfo@linak.be  
Web: www.linak.be - www.fr.linak.be

Brazil  
LINAK Do Brasil Comércio De Atuadores Ltda.  
Phone: +55 (11) 2832 7070  
Fax: +55 (11) 2832 7060  
E-mail: info@linak.com.br  
Web: www.linak.com.br

Canada  
LINAK Canada Inc.  
Phone: +1 502 253 5595  
Fax: +1 416 255 7720  
E-mail: info@linak.ca  
Web: www.linak-us.com

Czech Republic  
LINAK C&S s.r.o.  
Phone: +42 058 174 1814  
Fax: +42 058 170 2452  
E-mail: info@linak.cz  
Web: www.linak.cz - www.linak.sk

Denmark - International  
LINAK International  
Phone: +45 73 15 15 15  
E-mail: info@linak.com  
Web: www.linak.com

Denmark - Sales  
LINAK Danmark A/S  
Phone: +45 86 80 36 11  
Fax: +45 86 82 90 51  
E-mail: linak@linak-silkeborg.dk  
Web: www.linak.dk

Finland  
LINAK OY  
Phone: +358 10 841 8700  
E-mail: linak@linak.fi  
Web: www.linak.fi

France  
LINAK France E.U.R.L.  
Phone: +33 (0) 2 41 36 34 34  
Fax: +33 (0) 2 41 36 35 00  
E-mail: linak@linak.fr  
Web: www.linak.fr

Germany  
LINAK GmbH  
Phone: +49 6043 9655 0  
Fax: +49 6043 9655 60  
E-mail: info@linak.de  
Web: www.linak.de

India  
LINAK A/S India Liaison Office  
Phone: +91 120 4531797  
Fax: +91 120 4786428  
E-mail: info@linak.in  
Web: www.linak.in

Italy  
LINAK ITALIA S.r.l.  
Phone: +39 02 48 46 33 66  
Fax: +39 02 48 46 82 52  
E-mail: info@linak.it  
Web: www.linak.it

Japan  
LINAK K.K.  
Phone: 81-45-533-0802  
Fax: 81-45-533-0803  
E-mail: linak@linak.jp  
Web: www.linak.jp

Malaysia  
LINAK Actuators Sdn. Bhd.  
Phone: +60 4 210 6500  
Fax: +60 4 226 8901  
E-mail: info@linak-asia.com  
Web: www.linak.my

Netherlands  
LINAK Actuator-Systems B.V.  
Phone: +31 76 5 42 44 40 /  
+31 76 200 11 10  
E-mail: info@linak.nl  
Web: www.linak.nl

New Zealand  
LINAK New Zealand Ltd  
Phone: +64 9580 2071  
Fax: +64 9580 2072  
E-mail: nzsales@linak.com.au  
Web: www.linak.com.au

Norway  
LINAK Norge AS  
Phone: +47 32 82 90 90  
E-mail: info@linak.no  
Web: www.linak.no

Poland  
LINAK Polska  
LINAK Danmark A/S (Spółka Akcyjna)  
Phone: +48 22 295 09 70 /  
+48 22 295 09 71  
E-mail: info@linak.pl  
Web: www.linak.pl

Republic of Korea  
LINAK Korea Ltd.  
Phone: +82 2 6231 1515  
Fax: +82 2 6231 1516  
E-mail: info@linak.kr  
Web: www.linak.kr

Slovakia  
LINAK Slovakia S.R.O.  
Phone: +421 51 7563 444  
Web: www.linak.sk

Spain  
LINAK Actuadores, S.L.U  
Phone: +34 93 588 27 77  
Fax: +34 93 588 27 85  
E-mail: esma@linak.es  
Web: www.linak.es

Sweden  
LINAK Scandinavia AB  
Phone: +46 8 732 20 00  
Fax: +46 8 732 20 50  
E-mail: info@linak.se  
Web: www.linak.se

Switzerland  
LINAK AG  
Phone: +41 43 388 31 88  
Fax: +41 43 388 31 87  
E-mail: info@linak.ch  
Web: www.linak.ch - www.fr.linak.ch  
www.it.linak.ch

Taiwan  
LINAK (Shenzhen) Actuator systems Ltd.  
Taiwan Representative office  
Phone: +886 2 272 90068  
Fax: +886 2 272 90096  
E-mail: sales@linak.com.tw  
Web: www.linak.com.tw

Turkey  
LINAK İth. İhr. San. ve Tic. A.Ş.  
Phone: +90 312 4726338  
Fax: +90 312 4726635  
E-mail: info@linak.com.tr  
Web: www.linak.com.tr

United Kingdom & Ireland  
LINAK UK Limited  
Phone: +44 (0)121 544 2211  
Fax: +44 (0)121 544 2552  
E-mail: sales@linak.co.uk  
Web: www.linak.co.uk

## DISTRIBUTORS

Argentina  
Novotec Argentina SRL  
Phone: 011-4303-8989 / 8900  
Fax: 011-4032-0184  
E-mail: info@novotecargentina.com  
Web: www.novotecargentina.com

Colombia  
MEM Ltda  
Phone: +[57] (1) 334-7666  
Fax: +[57] (1) 282-1684  
E-mail: servicioalcliente@memlda.com.co  
Web: www.mem.net.co

India  
Mechatronics Control Equipments India Pvt Ltd  
Phone: +91-44-28558484, 85  
E-mail: bala@mechatronicscontrol.com  
Web: www.mechatronicscontrol.com

Indonesia  
PT. Himalaya Everest Jaya  
Phone: +6 221 544 8956 /+6 221 544 8965  
Fax: +6 221 619 1925  
Fax (Sales): +6 221 619 4658  
E-mail: hejplastic-div@centrin.net.id  
Web: www.hej.co.id

Israel  
NetivTech LTD  
Phone: +972 55-2266-535  
Fax: +972 2-9900-560  
Email: info@NetivTech.com  
Web: www.netivtech.com

Singapore  
Servo Dynamics Pte Ltd  
Phone: +65 6844 0288  
Fax: +65 6844 0070  
E-mail: servodynamics@servo.com.sg

South Africa  
Industrial Specialised Applications CC  
Phone: +27 011 466 0346  
E-mail: gartht@isagroup.co.za  
Web: www.isaza.co.za

United Arab Emirates  
Mechatronics  
Phone: +971 4 267 4311  
Fax: +971 4 267 4312  
E-mail: mechtron@emirates.net.ae

## Terms of use

LINAK® takes great care in providing accurate and up-to-date information on its products. However, the user is responsible for determining the suitability of LINAK products for a specific application. Due to continual development, LINAK products are subject to frequent modifications and changes. LINAK reserves the rights to conduct modifications, updates, and changes without any prior notice. For the same reason, LINAK cannot guarantee the correctness and actual status of imprinted information on its products.

LINAK uses its best efforts to fulfil orders. However, for the reasons mentioned above, LINAK cannot guarantee availability of any particular product at any given time. LINAK reserves the right to discontinue the sale of any product displayed on its website or listed in its catalogues or in other written material created and produced by LINAK, LINAK subsidiaries, or LINAK affiliates. All sales are subject to the 'Standard Terms of Sale and Delivery for LINAK A/S' available on LINAK websites. LINAK and the LINAK logotype are registered trademarks of LINAK A/S. All rights reserved.