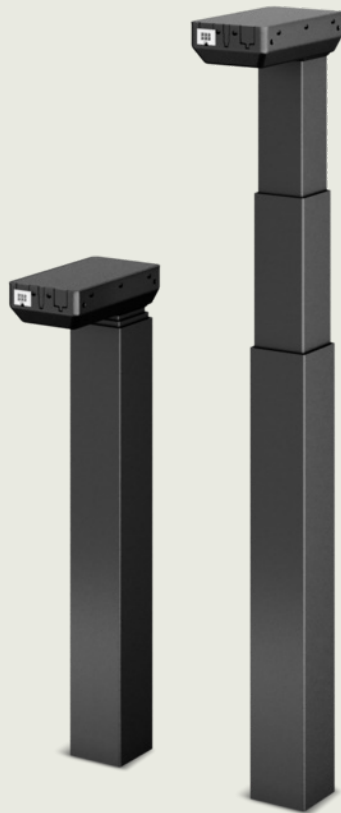


# DL19

## Data Sheet





The DESKLIFT™ DL19 is a three-part lifting column with square profiles and a motor housing. It is a perfect choice for a wide range of different desk applications ranging from industry to office desks. The DL19 has the same outer dimensions (70 x 70 mm) and motor-housing mounting holes as the two-part DL18 column, which makes them fit the same top frame and foot constructions, including the Kick & Click™ top frame. The three-part construction ensures a short installation dimension combined with a long stroke length making the DL19 an optimum choice no matter what the height of the person using the desk is. The middle profile of the DL19 moves synchronously so the profiles are always in the same height optimising the desk design and the stability. The DL19 has a compact motor housing, which is almost invisible in the tabletop construction, and the column is very sturdy. The DL19 is available in several standard colours to fit into a wide range of desk designs.

The wide DL19 product programme offers various options such as:

- PLUS™ - a design-optimised version - optionally available with trim rings in black, grey or white for optimised appearance
- PLUS™ versions prepared for Click-on Feet
- PLUS™ High-speed - fast height adjustment and optimised design
- PLUS™ High-speed XL - fast height adjustment, optimised design, and long stroke length
- PIEZO™ (collision protection) minimising the risk of damage to a desk caused by collision with an obstacle
- versions for bench solutions

The columns are controlled by a DESKLINE® control box (CBD). The control box ensures optimal parallel drive and a pleasantly low sound level. Depending on the control box, the columns can be used as a single column or with 2, 3 or 4 columns in parallel systems, or up to 16 columns in multi-parallel systems. A variety of desk panels can be used for adjusting the desk. A Desk Sensor™ 1 anti-collision dongle can be plugged into the control box to limit material damage to the desk or an object in case a collision occurs during driving of the desk.

## Features/Options/Compatibility/Usage

### Features

- Three-part motor housing column
- In combination with CBD6S:

| Parameter              | With CBD6S (300 W or 200 W) |         |
|------------------------|-----------------------------|---------|
|                        | 300 W                       | 200 W   |
| Max. speed (unloaded)  | 38 mm/s                     | 23 mm/s |
| Max. load (per column) | 800 N                       | 1200 N  |
| Self-lock (per column) | 800 N                       | 1200 N  |

- Installation dimension: 560 mm  
518 mm (BIFMA)
- Stroke length: 650 mm  
665 mm (BIFMA)
- Weight: Approximately 8.5 kg per column
- Dimensions column: 70 x 70 mm (see also [Dimension drawings](#)).
- Dimension motor housing: 177 x 97 x 46 mm
- Four M6 and two M8 threaded holes in bottom plate for mounting of feet
- Colour: Available in black (RAL 9005), silver grey (RAL 9006) or white (RAL9016)
- Low sound level

## Options

- PIEZO™: Integrated sensor minimising the risk for damage to a desk caused by squeezing or blocking it in upward or downward direction
- PLUS™ columns:
  - Invisible gliding pads and a smooth outer profile with no punch marks
  - Available with standard bracket
  - Available with trim rings in black, grey or white
  - Prepared for Click-on Feet
- PLUS™ columns available as high-speed variants for fast height adjustment (in combination with CBD6S with software SW03002024 version 1.03 or newer)

| Parameter              | With CBD6S (300 W) | With CBD6S (200 W) |
|------------------------|--------------------|--------------------|
| Max. speed (unloaded)  | 80 mm/s            | 60 mm/s            |
| Max. load (per column) | 700 N              |                    |
| Self-lock (per column) | 1200 N             |                    |

- High-speed XL: PLUS™ High-speed columns are available in variants with long stroke length

| Parameter              | With CBD6S (300 W)       | With CBD6S (200 W) |
|------------------------|--------------------------|--------------------|
| Max. speed (unloaded)  | 80 mm/s                  | 60 mm/s            |
| Built-in dimension     | 785 mm                   |                    |
| Stroke length          | 1100 mm                  |                    |
| Max. load (per column) | 600 N                    |                    |
| Self-lock (per column) | 1200 N                   |                    |
| Bending moment         | My = max. 100 Nm dynamic |                    |

- Available with bench bracket (two versions) and with mounting bracket for a crossbar, see [Dimension drawings](#)
- Customised colours
- Available as DESKLIFT™ SetPack

## Compatibility

- DESKLINE® control boxes
- DESKLINE® controls
- Kick & Click™ top frame
- DESKLIFT™ Feet; PLUS™ columns also compatible with Click-on Feet

## Usage

- Single or 2, 3 or 4 parallel drive or even multi-parallel with up to 16 columns
- Duty cycle: 10 %  $\approx$  max. 2 minutes continuous use at full load, followed by 18 minutes pause
- For indoor use in dry locations

| Parameter            | Operation                   | Storage and transportation  |
|----------------------|-----------------------------|-----------------------------|
| Temperature          | 10 to 40 °C                 | -10 to +50 °C               |
| Relative humidity    | 20% to 80% - non-condensing | 20% to 80% - non-condensing |
| Atmospheric pressure | 800 to 1060 hPa             | 700 to 1060 hPa             |
| Altitude             | Max. 2000 m                 | N/A                         |

For system compliance, please refer to the Declaration of Conformity in the [User Manual](#).

## Ordering

| DL19                    |     |  |
|-------------------------|-----|--|
| SPINDLE TYPE            | 0   | 0 = 20 mm pitch (Standard)<br>1 = 12 mm pitch (1200 N)<br>3 = 30 mm pitch (High-speed) *   |
| TRIM RINGS              | 0   | 0 = No trim rings<br>A = Grey trim rings **<br>B = Black trim rings **<br>D = White trim rings **  |
| MOUNTING BRACKET        | 0   | 0 = None<br>1 = 120 x 40 x 8 mm (with 2 x M8) **<br>L = Bench bracket on left side<br>R = Bench bracket on right side<br>V = Bench bracket on left side ***<br>H = Bench bracket on right side *** |
| COLOUR                  | B   | A = Grey (RAL 9006)<br>B = Black (RAL 9005)<br>D = White (RAL 9016)  |
| DESIGN                  | P   | 0 = Standard<br>P = PLUS series<br>Z = PLUS columns prepared for Click-on Foot   |
| MOTOR TYPE              | 0   | 0 = Standard<br>E = PIEZO<br>T = High-speed ****<br>V = High-speed + PIEZO ****  |
| STROKE LENGTH           | 650 | 650 = 650 mm<br>665 = 665 mm (BIFMA)<br>1100 = 1100 mm (High-speed XL) *   |
| INSTALLATION DIM.       | 560 | 560 = 560 mm<br>518 = 518 mm (BIFMA)<br>785 = 785 mm (High-speed XL) *   |
| <b>DL19000BP0650560</b> |     |  |

\*: Always with motor type option T or V

\*\* : Only available with PLUS™ columns

\*\*\* : Columns with bench bracket compatible with the LINAK cross member set for a complete bench solution.  
Cross members must be ordered separately

\*\*\*\* : Always with PLUS™ columns and spindle type 30 mm pitch



All cables for creating a fully connected DESKLINE® system must be ordered separately. We offer a range of different versions and lengths. To get information such as ordering number, and colour and length of the cables, please contact your local LINAK.



If you want to operate a 1200 N column **without** PIEZO™ with a desk panel with display, you must configure the actuator type in the control box to ensure the correct read-out.

If you want to operate a 1200 N column **with** PIEZO™, do not configure the actuator type. This column has IID and will automatically be detected as the right type of column.



A column in BIFMA version is less stable in the full stroke length compared to a standard column as it has less overlap between the profiles.

## Technical data

### Performance curves

The following data is measured in connection with 2 to 4 lifting columns and control box CBD6S. The desk is driving upwards.



The curves below apply to a centrally placed load. With moment load, there will be increased friction in the columns, which will reduce the lifting force correspondingly.

#### DL19 800 N (20 mm spindle)

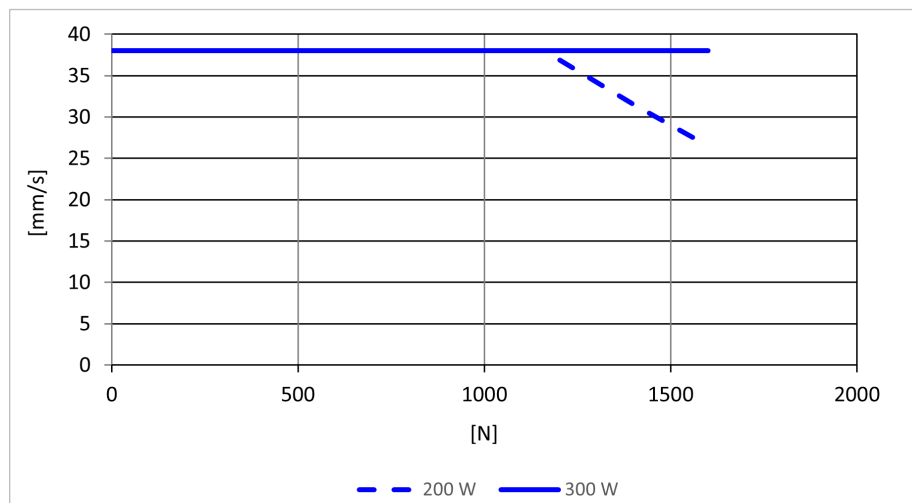


Figure 1 Two columns (equally loaded) - 200 W / 300 W

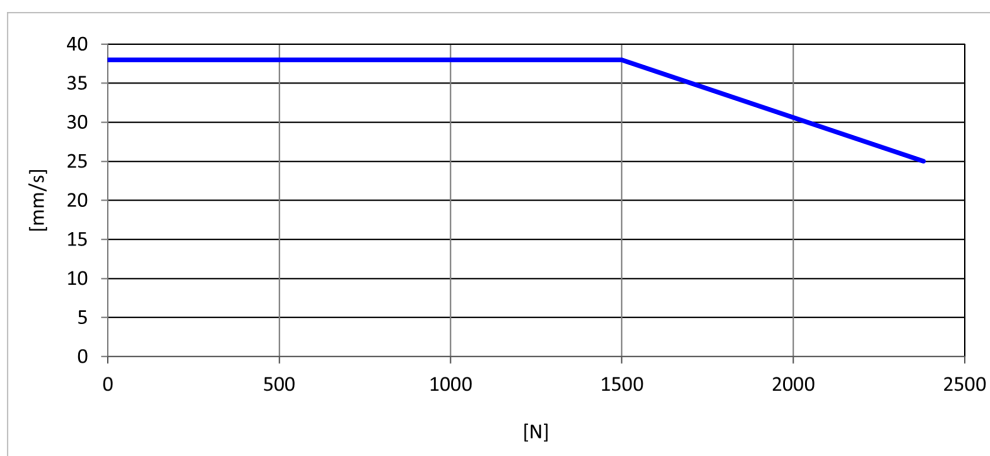


Figure 2 Three columns (equally loaded) with CBD6S - 300 W

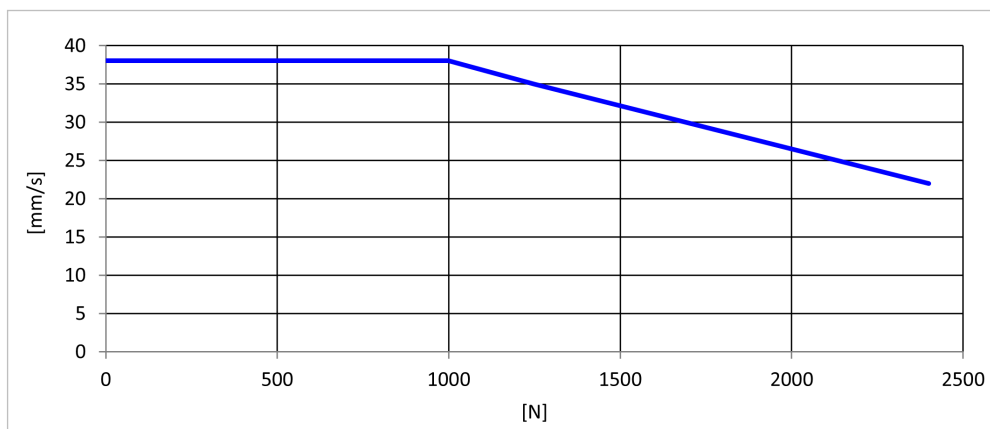


Figure 3 Four columns (equally loaded) with CBD6S - 300 W

## High-speed columns with CBD6S

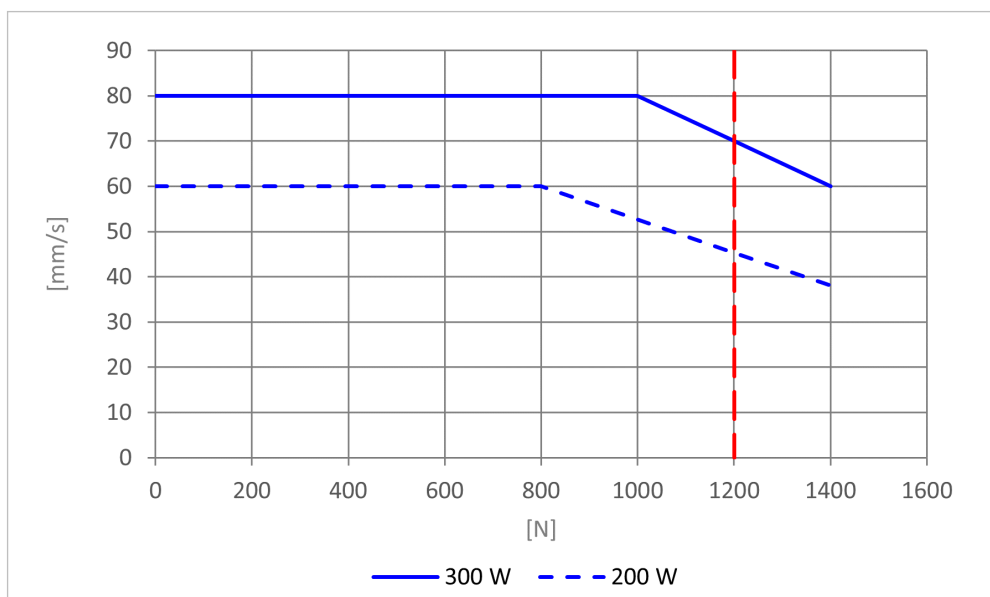


Figure 4 Two High-speed columns (equally loaded) with CBD6S - 200 W / 300 W

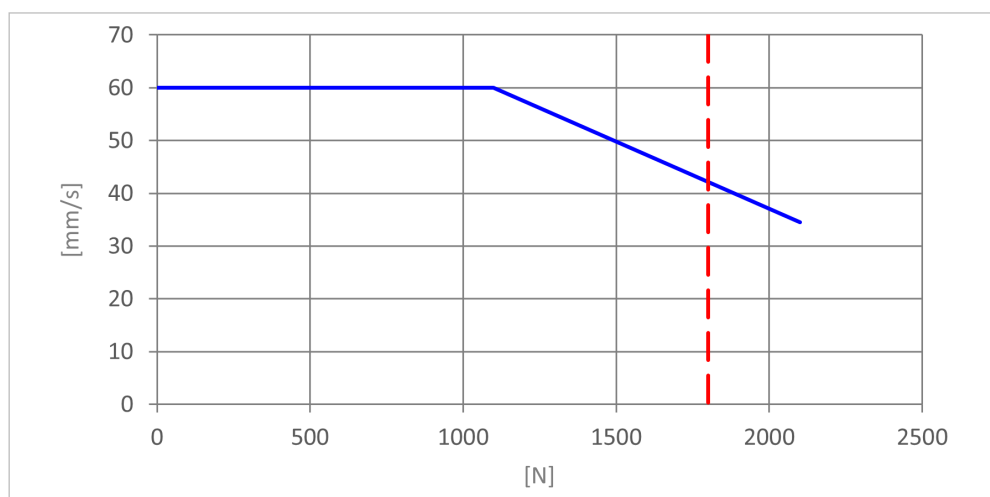


Figure 5 Three High-speed columns (equally loaded) with CBD6S - 300 W

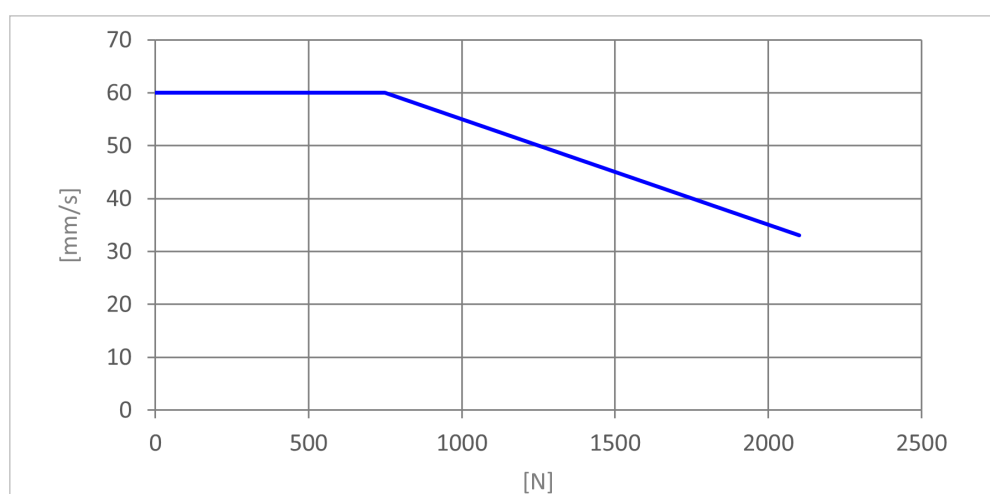


Figure 6 Four High-speed columns (equally loaded) with CBD6S - 300 W



The vertical dotted line indicates the maximum load for High-speed XL columns.

## DL19 1200 N (12 mm spindle) with CBD6S

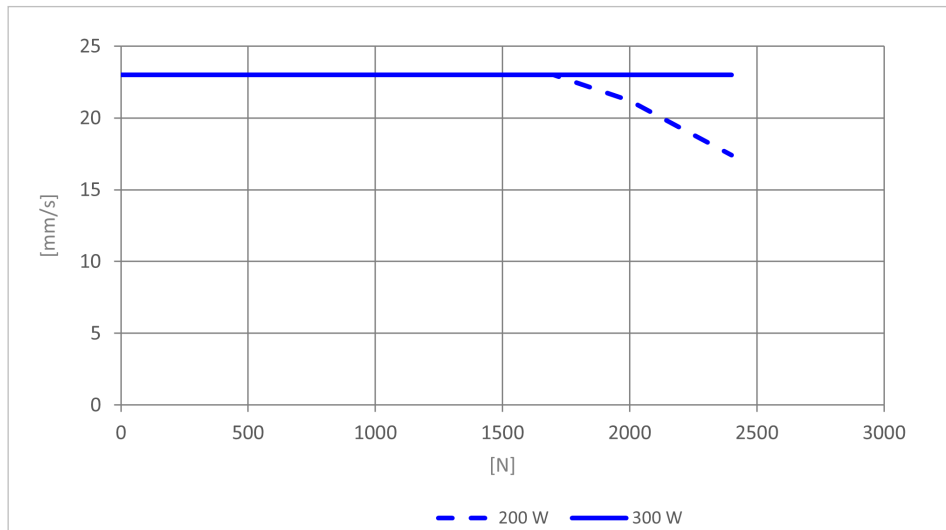


Figure 7 Two columns (equally loaded)

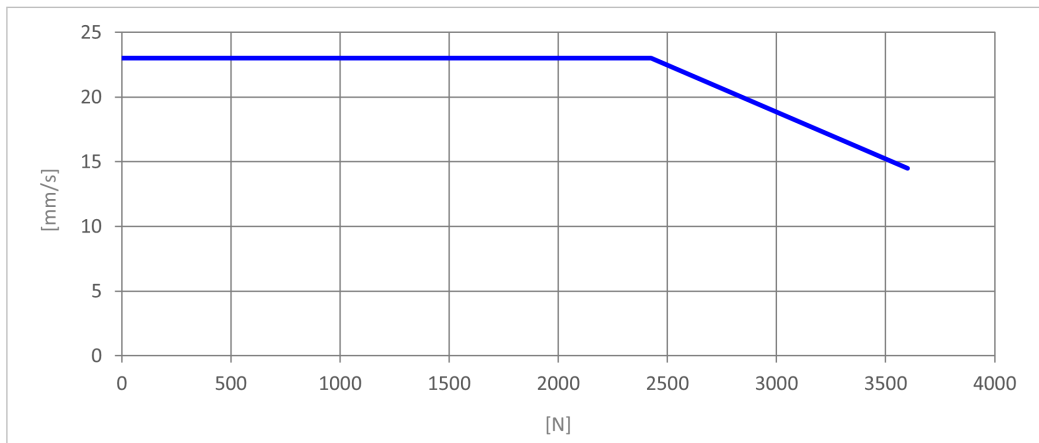


Figure 8 Three columns (equally loaded) with CBD6S - 300 W

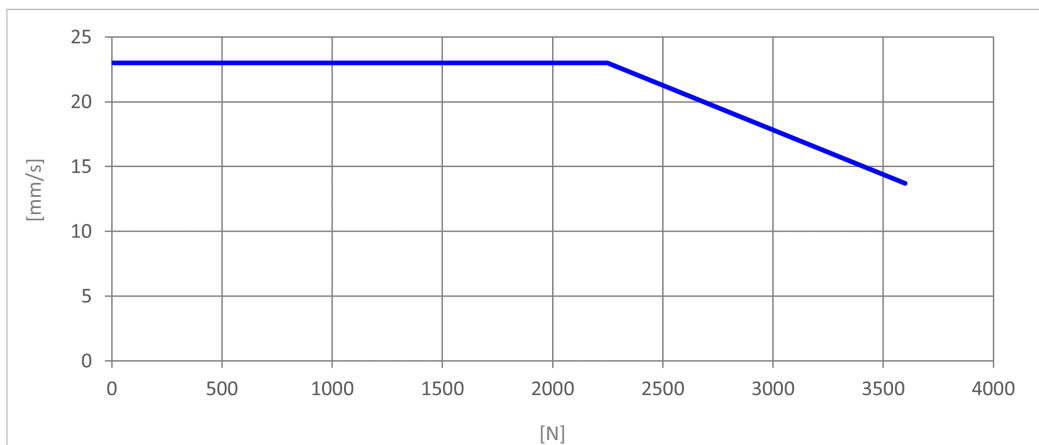


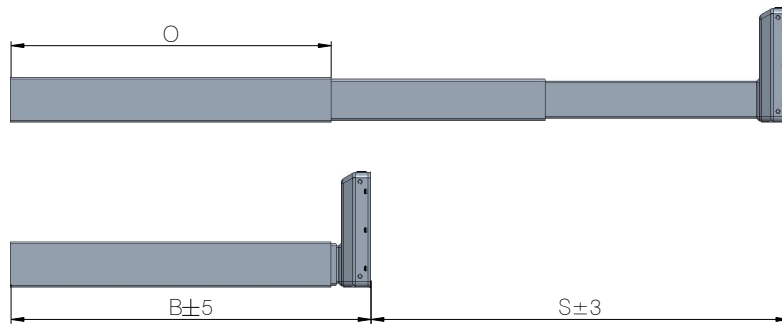
Figure 9 Four columns (equally loaded) with CBD6S - 300 W

## Dimension drawings



All dimensions are in mm.

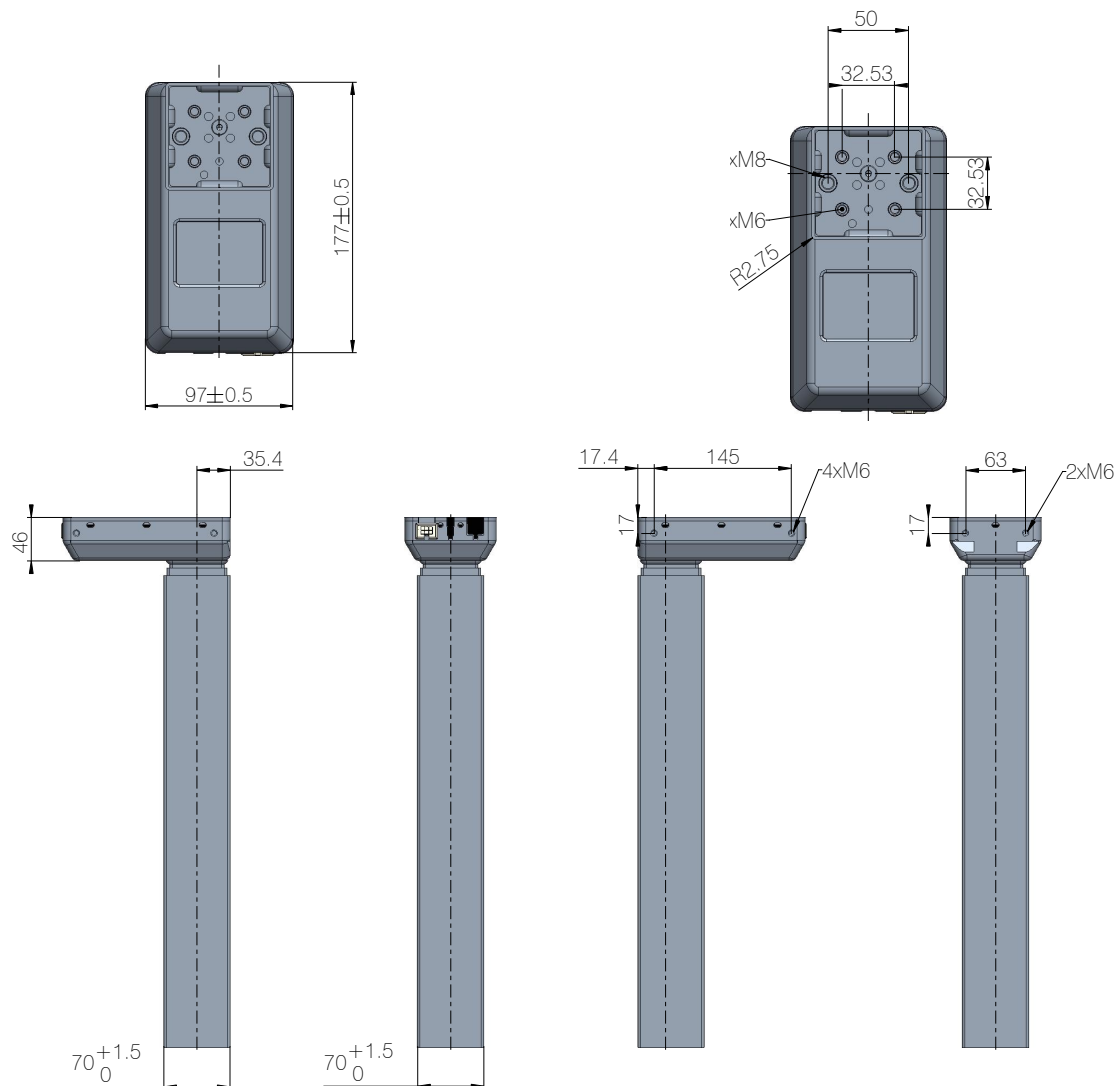
### Columns



Drawing no. 1029W7901

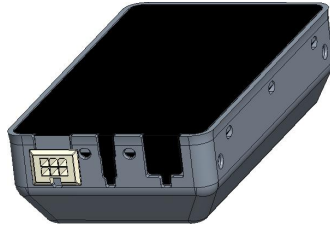
| Version       | Combination code  | B (Built-in length) | S (Stroke length) | O (Outer profile length) |
|---------------|-------------------|---------------------|-------------------|--------------------------|
| Standard      | DL19xxxxx650560   | 560                 | 650               | 498                      |
| BIFMA         | DL19xxxxx665518   | 518                 | 665               | 456                      |
| High-speed XL | DL193xxxPx1100785 | 785                 | 1100              | 723                      |

Figure 10 Built-in length, stroke length, and outer profile length



Drawing no. 1029W7901

Figure 11 Motor-housing, bottom plate, and profile

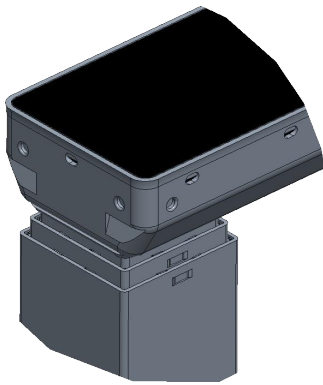


Standard

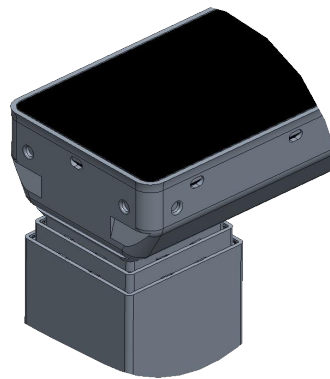
Drawing no. 1029W7901

| Combination code | Type     |
|------------------|----------|
| DL19xxxxxxxxxxxx | Standard |

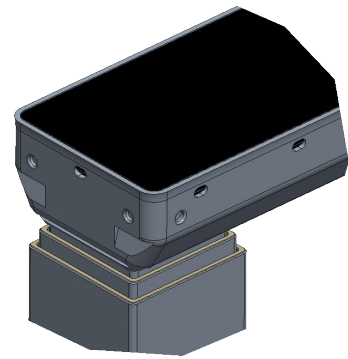
Figure 12 Socket combination



Standard



PLUS™ without trim rings

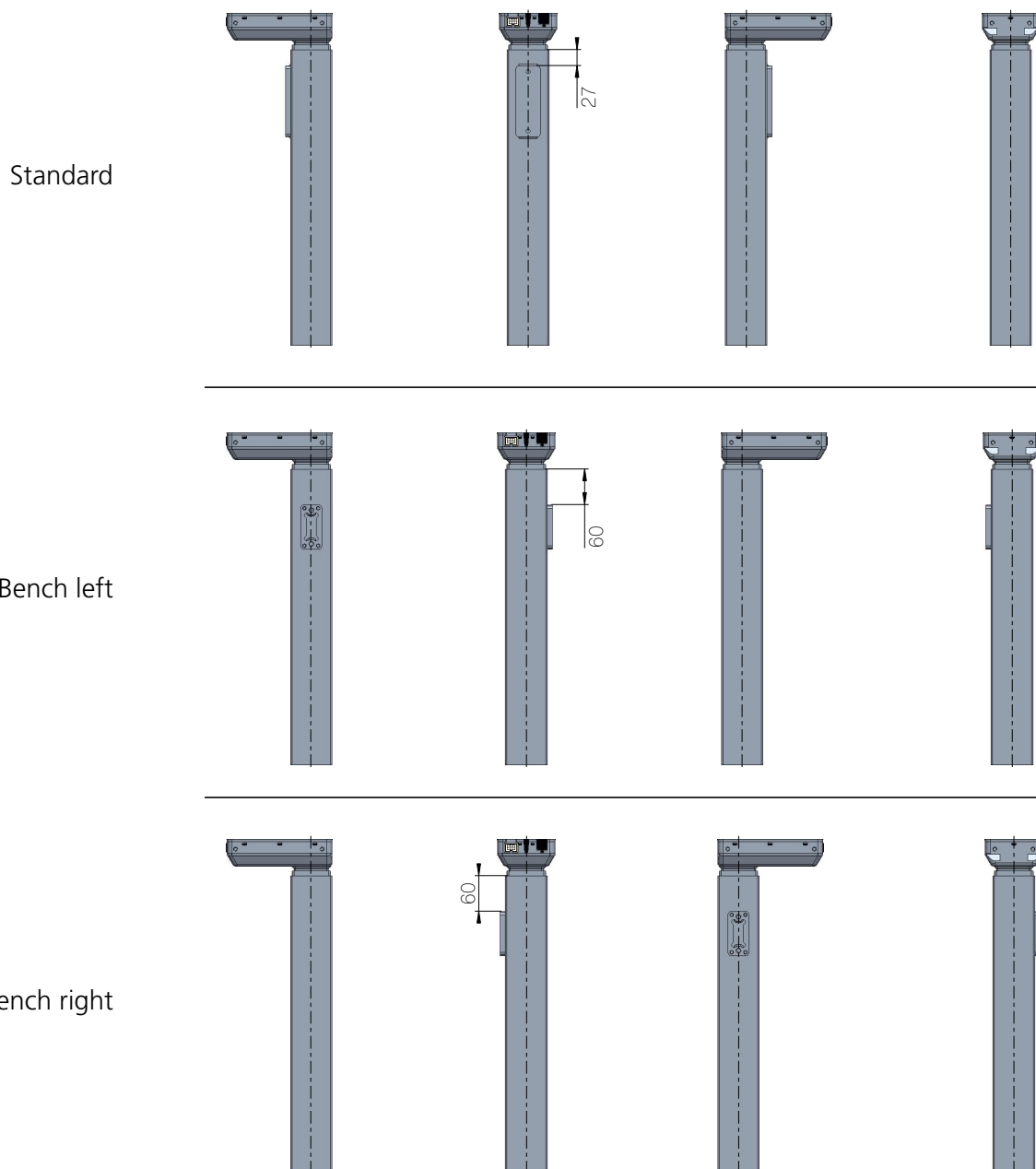


PLUS™ with trim rings

Drawing no. 1029W7901

Figure 13 Profile designs

## Bracket options



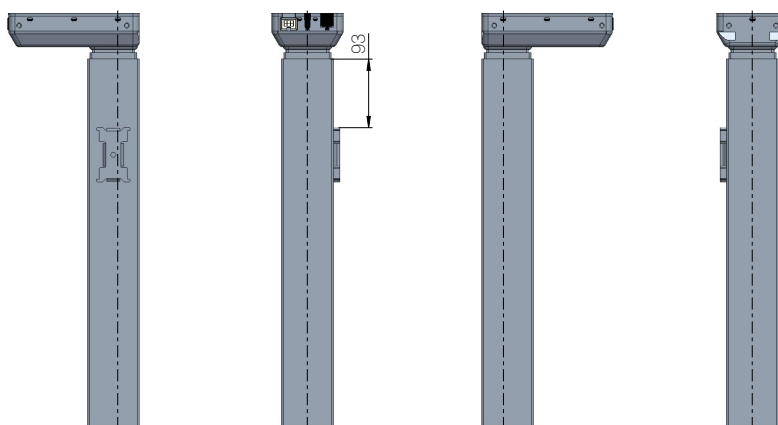
Drawing no. 1029W7901

| Combination code  | Standard | Bench left | Bench right |
|-------------------|----------|------------|-------------|
| DL19xx1xPxxxxxxxx | X *      |            |             |
| DL19xxLxxxxxxxx   |          | X          |             |
| DL19xxRxxxxxxxx   |          |            | X           |

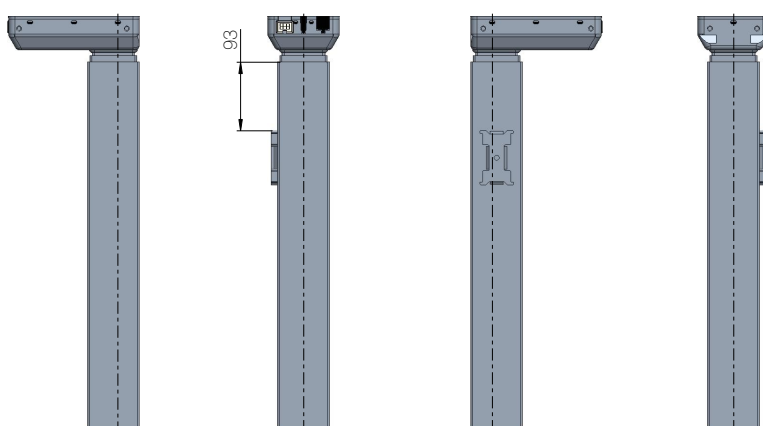
Figure 14 Bracket options (types standard, L and R)

\* Available with PLUS™ columns

**DESKLINE Bench left**



**DESKLINE Bench right**



Drawing no. 1029W7901

| Combination code | DESKLINE Bench left | DESKLINE Bench right |
|------------------|---------------------|----------------------|
| DL19xxVxPxxxxxxx | X *                 |                      |
| DL19xxHxPxxxxxxx |                     | X *                  |

Figure 15 DESKLINE Bench bracket options (types V and H)  
(compatible with LINAK cross members)

\* Available with PLUS™ columns

## Brackets

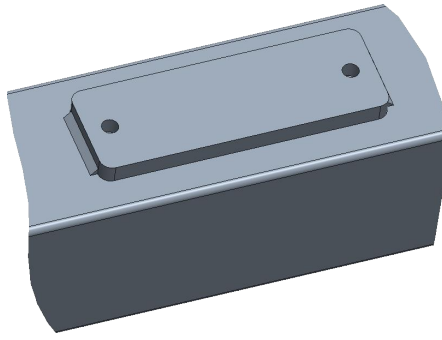


Figure 16 Standard bracket

Drawing no. 1029W7901

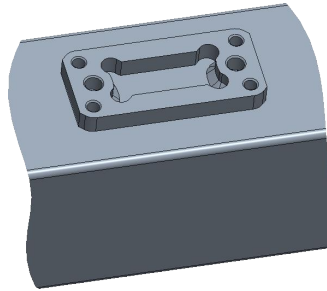


Figure 17 Bench bracket (type L and R)

Drawing no. 1029W7901

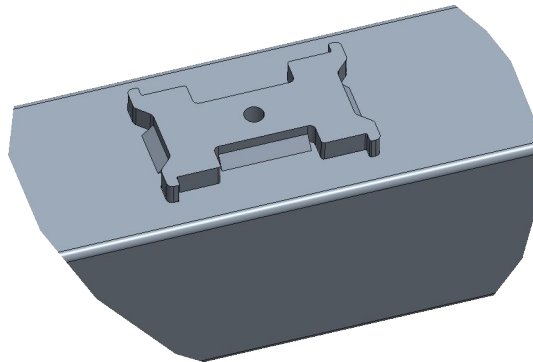
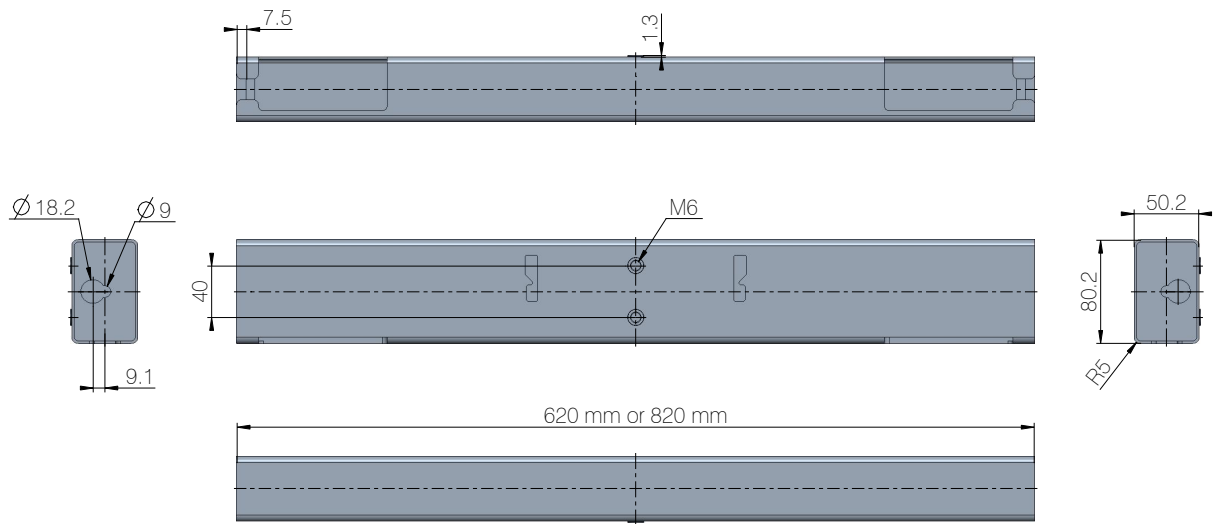


Figure 18 Bench bracket (type V and H) - compatible with LINAK cross members

Drawing no. 1029W7901

## Cross members



Drawing no. 1066W4030

Figure 19 Cross member

# Contacts

## FACTORIES

Denmark - Headquarters  
LINAK A/S  
Phone: +45 73 15 15 15  
Fax: +45 74 45 80 48  
Fax (Sales): +45 73 15 16 13  
Web: www.linak.com

China  
LINAK (Shenzhen) Actuator Systems, Ltd.  
Phone: +86 755 8610 6656  
Phone: +86 755 8610 6990  
Web: www.linak.cn

Slovakia  
LINAK Slovakia s.r.o.  
Phone: +421 51 7563 444  
Web: www.linak.sk

Thailand  
LINAK APAC Ltd.  
Phone: +66 33 265 400  
Web: www.linak.com

USA  
LINAK U.S. Inc.  
Americas Headquarters  
Phone: +1 502 253 5595  
Fax: +1 502 253 5596  
Web: www.linak-us.com  
www.linak-latinamerica.com

## SUBSIDIARIES

Australia  
LINAK Australia Pty. Ltd  
Phone: +61 3 8796 9777  
Fax: +61 3 8796 9778  
E-mail: sales@linak.com.au  
Web: www.linak.com.au

Austria  
LINAK Zweigniederlassung - Österreich (Wien)  
Phone: +43 (1) 890 7446  
Fax: +43 (1) 890 744615  
E-mail: info@linak.de  
Web: www.linak.at - www.linak.hu

Belgium  
LINAK Actuator-Systems NV/SA  
(Belgium & Luxembourg)  
Phone: +32 (0)9 230 01 09  
E-mail: beinfo@linak.be  
Web: www.linak.be - www.fr.linak.be

Brazil  
LINAK Do Brasil Comércio De Atuadores Ltda.  
Phone: +55 (11) 2832 7070  
Fax: +55 (11) 2832 7060  
E-mail: info@linak.com.br  
Web: www.linak.com.br

Canada  
LINAK Canada Inc.  
Phone: +1 502 253 5595  
Fax: +1 416 255 7720  
E-mail: info@linak.ca  
Web: www.linak-us.com

Czech Republic  
LINAK C&S s.r.o.  
Phone: +42 058 174 1814  
Fax: +42 058 170 2452  
E-mail: info@linak.cz  
Web: www.linak.cz - www.linak.sk

Denmark - International  
LINAK International  
Phone: +45 73 15 15 15  
E-mail: info@linak.com  
Web: www.linak.com

Denmark - Sales  
LINAK Danmark A/S  
Phone: +45 86 80 36 11  
Fax: +45 86 82 90 51  
E-mail: linak@linak-silkeborg.dk  
Web: www.linak.dk

Finland  
LINAK OY  
Phone: +358 10 841 8700  
E-mail: linak@linak.fi  
Web: www.linak.fi

France  
LINAK France E.U.R.L  
Phone: +33 (0) 2 41 36 34 34  
Fax: +33 (0) 2 41 36 35 00  
E-mail: linak@linak.fr  
Web: www.linak.fr

Germany  
LINAK GmbH  
Phone: +49 6043 9655 0  
Fax: +49 6043 9655 60  
E-mail: info@linak.de  
Web: www.linak.de

India  
LINAK A/S India Liaison Office  
Phone: +91 120 4531797  
Fax: +91 120 4786428  
E-mail: info@linak.in  
Web: www.linak.in

Italy  
LINAK ITALIA S.r.l.  
Phone: +39 02 48 46 33 66  
Fax: +39 02 48 46 82 52  
E-mail: info@linak.it  
Web: www.linak.it

Japan  
LINAK K.K.  
Phone: 81-45-533-0802  
Fax: 81-45-533-0803  
E-mail: linak@linak.jp  
Web: www.linak.jp

Malaysia  
LINAK Actuators Sdn. Bhd.  
Phone: +60 4 210 6500  
Fax: +60 4 226 8901  
E-mail: info@linak-asia.com  
Web: www.linak.my

Netherlands  
LINAK Actuator-Systems B.V.  
Phone: +31 76 5 42 44 40 /  
+31 76 200 11 10  
E-mail: info@linak.nl  
Web: www.linak.nl

New Zealand  
LINAK New Zealand Ltd  
Phone: +64 9580 2071  
Fax: +64 9580 2072  
E-mail: nzsales@linak.com.au  
Web: www.linak.com.au

Norway  
LINAK Norge AS  
Phone: +47 32 82 90 90  
E-mail: info@linak.no  
Web: www.linak.no

Poland  
LINAK Polska  
LINAK Danmark A/S (Spółka Akcyjna)  
Phone: +48 22 295 09 70 /  
+48 22 295 09 71  
E-mail: info@linak.pl  
Web: www.linak.pl

Republic of Korea  
LINAK Korea Ltd.  
Phone: +82 2 6231 1515  
Fax: +82 2 6231 1516  
E-mail: info@linak.kr  
Web: www.linak.kr

Slovakia  
LINAK Slovakia S.R.O.  
Phone: +421 51 7563 444  
Web: www.linak.sk

Spain  
LINAK Actuadores, S.L.U  
Phone: +34 93 588 27 77  
Fax: +34 93 588 27 85  
E-mail: esma@linak.es  
Web: www.linak.es

Sweden  
LINAK Scandinavia AB  
Phone: +46 8 732 20 00  
Fax: +46 8 732 20 50  
E-mail: info@linak.se  
Web: www.linak.se

Switzerland  
LINAK AG  
Phone: +41 43 388 31 88  
Fax: +41 43 388 31 87  
E-mail: info@linak.ch  
Web: www.linak.ch - www.fr.linak.ch  
www.it.linak.ch

Taiwan  
LINAK (Shenzhen) Actuator systems Ltd.  
Taiwan Representative office  
Phone: +886 2 272 90068  
Fax: +886 2 272 90096  
E-mail: sales@linak.com.tw  
Web: www.linak.com.tw

Turkey  
LINAK İth. İhr. San. ve Tic. A.Ş.  
Phone: +90 312 4726338  
Fax: +90 312 4726635  
E-mail: info@linak.com.tr  
Web: www.linak.com.tr

United Kingdom & Ireland  
LINAK UK Limited  
Phone: +44 (0)121 544 2211  
Fax: +44 (0)121 544 2552  
E-mail: sales@linak.co.uk  
Web: www.linak.co.uk

## DISTRIBUTORS

Argentina  
Novotec Argentina SRL  
Phone: 011-4303-8989 / 8900  
Fax: 011-4032-0184  
E-mail: info@novotecargentina.com  
Web: www.novotecargentina.com

Colombia  
MEM Ltda  
Phone: +[57] (1) 334-7666  
Fax: +[57] (1) 282-1684  
E-mail: servicioalcliente@memltda.com.co  
Web: www.mem.net.co

India  
Mechatronics Control Equipments India Pvt Ltd  
Phone: +91-44-28558484, 85  
E-mail: bala@mechatronicscontrol.com  
Web: www.mechatronicscontrol.com

Indonesia  
PT. Himalaya Everest Jaya  
Phone: +6 221 544 8956 /+6 221 544 8965  
Fax: +6 221 619 1925  
Fax (Sales): +6 221 619 4658  
E-mail: hejplastic-div@centrin.net.id  
Web: www.hej.co.id

Israel  
NetivTech LTD  
Phone: +972 55-2266-535  
Fax: +972 2-9900-560  
Email: info@NetivTech.com  
Web: www.netivtech.com

Singapore  
Servo Dynamics Pte Ltd  
Phone: +65 6844 0288  
Fax: +65 6844 0070  
E-mail: servodynamics@servo.com.sg

South Africa  
Industrial Specialised Applications CC  
Phone: +27 011 466 0346  
E-mail: gartht@isagroup.co.za  
Web: www.isaza.co.za

United Arab Emirates  
Mechatronics  
Phone: +971 4 267 4311  
Fax: +971 4 267 4312  
E-mail: mechtron@emirates.net.ae

## Terms of use

LINAK® takes great care in providing accurate and up-to-date information on its products. However, the user is responsible for determining the suitability of LINAK products for a specific application. Due to continual development, LINAK products are subject to frequent modifications and changes. LINAK reserves the rights to conduct modifications, updates, and changes without any prior notice. For the same reason, LINAK cannot guarantee the correctness and actual status of imprinted information on its products.

LINAK uses its best efforts to fulfil orders. However, for the reasons mentioned above, LINAK cannot guarantee availability of any particular product at any given time. LINAK reserves the right to discontinue the sale of any product displayed on its website or listed in its catalogues or in other written material created and produced by LINAK, LINAK subsidiaries, or LINAK affiliates. All sales are subject to the 'Standard Terms of Sale and Delivery for LINAK A/S' available on LINAK websites. LINAK and the LINAK logotype are registered trademarks of LINAK A/S. All rights reserved.