

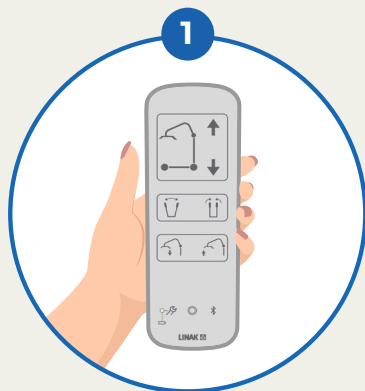
How to pair a LINAK® Wireless LIFT50™



Double confirmation
beep - Pairing OK



Beep
Beep



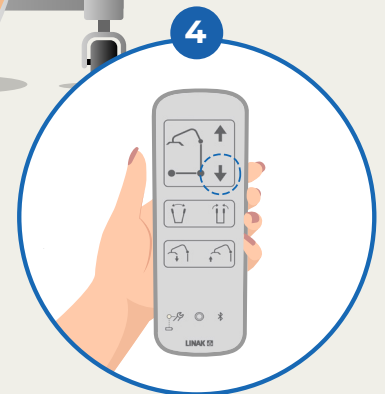
Move within two meters
of the patient lift.



Enter Direct Pairing Mode by
activating key 1 and magnet
in 3 seconds.



Release key and magnet and
move closer to LIFT50™
until buzzer frequency
change from slow to fast.



Confirm pairing by
pushing key 1